

**QUICK INSTALLATION GUIDE**

**Dual-Band Wireless-N USB  
Network Adapter**

Model: **WUSB600N**



**N** | **ULTRA**  
RANGEPLUS

**Package Contents**

- Dual-Band Wireless-N USB Network Adapter
- USB Extension Base
- Setup CD-ROM with User Guide
- Quick Installation



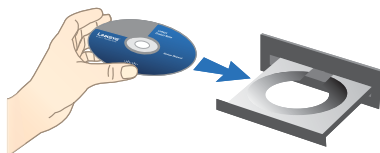
# 1 Installation

The Adapter is installed and set up using the Setup Wizard on the enclosed Setup Wizard CD.



**IMPORTANT:** Do not install the Adapter in your computer until you are instructed to do so, or the Adapter will not install correctly.

- A.** Insert the Setup Wizard CD into your CD-ROM drive.



Insert the CD-ROM



**NOTE:** Windows or other personal firewalls may ask for permission to run the software or program. You will need to allow the software to run in order to continue.

- B.** The *Welcome* screen appears.

Click the **Click Here to Start** button.



Click Here to Start

- C.** Read the License Agreement, and select **I accept the terms in the License Agreement**.

Click **Next** to continue the installation.



License Agreement

- D.** Locate an available USB slot on your computer.

Insert the Adapter into the slot until it locks into place.

Click **Next**.



Insert the Adapter

- E.** If your computer runs **Windows XP or 2000**, proceed to “Section 2: Setup for Windows XP or 2000”.

If your computer runs **Windows Vista**, proceed to “Section 3: Setup for Windows Vista”.

# 2 Setup for Windows XP or 2000

The Adapter supports, Wi-Fi Protected Setup, a feature that makes it easy to set up your wireless network.

If the *Available Wireless Networks* screen appears, your router does not support this feature. Proceed to the “No Wi-Fi Protected Setup” section.



Available Wireless Networks

If the *Connect to a Network* screen appears, the Adapter detects a router that supports Wi-Fi Protected Setup. Proceed to the “Wi-Fi Protected Setup” section.



Connect to a Network

## No Wi-Fi Protected Setup

From the *Available Wireless Networks* screen, you can launch one of the two setup methods.

If your network appears on the *Available Wireless Networks* screen, proceed to step A. If your network does not appear on the *Available Wireless Networks* screen, click **Advanced Setup** and follow the on-screen prompts.

- A.** On the *Available Wireless Networks* screen, the available networks are listed in the table. Select your network, and then click **Connect**.



Available Wireless Networks

- B.** If your network does not use wireless security, proceed to the “Wireless Security Disabled” section. If your network uses wireless security, proceed to the Wireless Security Enabled” section.

## Wireless Security Disabled

- A.** Click **Connect Anyway**.



Click Connect Anyway

- B.** Click **Finish**.




Congratulations

- C. The *Status* screen of the Wireless Network Monitor appears the first time you run the Setup Wizard. To exit the Monitor, click the **X** in the upper right corner.



Connected to the Network



**NOTE:** After the Adapter is installed, the Wireless Network Monitor screen opens, and its icon  appears in your computer's system tray. You can double-click the icon to open the Monitor if you want to find available wireless networks or change the Adapter's configuration. For detailed information on the Monitor, refer to the User Guide on the CD-ROM.

**Congratulations! Setup is complete.**

## Wireless Security Enabled

- A. If your network has wireless security, you will see one of these wireless security screens. Follow the instructions for the screen you see.

### WPA2-Personal Key Needed for Connection

1. Enter the Passphrase (also called a pre-shared key) of your wireless network. It must have 8-63 characters.
2. Click **Connect** and go to step B.



WPA2-Personal Key Needed for Connection

## WPA-Personal Key Needed for Connection

1. Enter the Passphrase (also called a pre-shared key) of your wireless network. It must have 8-63 characters.
2. Click **Connect** and go to step B.



WPA-Personal Key Needed for Connection

## WEP Key or Passphrase Needed for Connection

1. Enter the Passphrase or WEP Key.  
**Passphrase** The Passphrase is case-sensitive and must have 16 or fewer alphanumeric characters.

**WEP Key** For 64-bit encryption, enter 10 hexadecimal characters ("0" to "9" and "A" to "F"). For 128-bit encryption, enter 26 hexadecimal characters.

2. Click **Connect** and go to step B.
- B. On the *Congratulations* screen, click **Finish**.



WEP Key or Passphrase Needed for Connection



Congratulations




- C. The *Status* screen of the Wireless Network Monitor appears the first time you run the Setup Wizard. To exit the Monitor, click the **X** in the upper right corner.



Connected to the Network



**NOTE:** After the Adapter is installed, the Wireless Network Monitor screen opens, and its icon  appears in your computer's system tray. You can double-click the icon to open the Monitor if you want to find available wireless networks or change the Adapter's configuration. For detailed information on the Monitor, refer to the User Guide on the CD-ROM.

**Congratulations! Setup is complete.**

## Wi-Fi Protected Setup


- A. If your router supports Wi-Fi Protected Setup, click **Use Wi-Fi Protected Setup**.

If you are not sure whether your router supports Wi-Fi Protected Setup or you want to manually connect to your router, click **Skip**. Then refer to the "No Wi-Fi Protected Setup" section for instructions.



Connect to a Network

- B.** Press the **Wi-Fi Protected Setup** button on the Router.

Within two minutes, click the **Wi-Fi Protected Setup** button  on this screen.



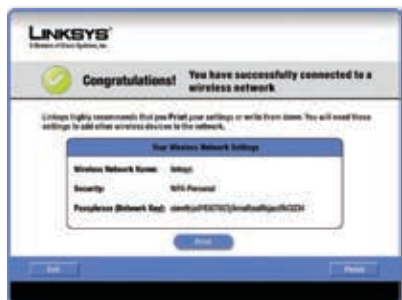
Wi-Fi Protected Setup

- C.** The Adapter connects to the network.



Connecting to the Network

- D.** Click **Print** to print out your wireless network settings. Then click **Finish**.




Congratulations

- E.** The *Status* screen of the Wireless Network Monitor appears the first time you run the Setup Wizard. To exit the Monitor, click the **X** in the upper right corner.



Connected to the Network



**NOTE:** After the Adapter is installed, the Wireless Network Monitor screen opens, and its icon  appears in your computer's system tray. You can double-click the icon to open the Monitor if you want to find available wireless networks or change the Adapter's configuration. For detailed information on the Monitor, refer to the User Guide on the CD-ROM.

**Congratulations! Setup is complete.**

# 3 Setup for Windows Vista

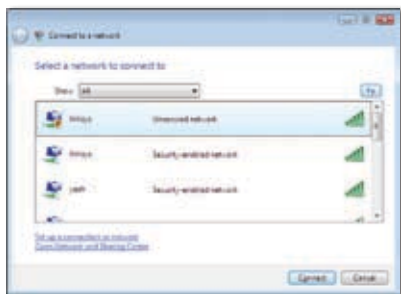
- A.** After you install the Adapter correctly, the *Congratulations* screen appears.

Click **Finish**.



Congratulations

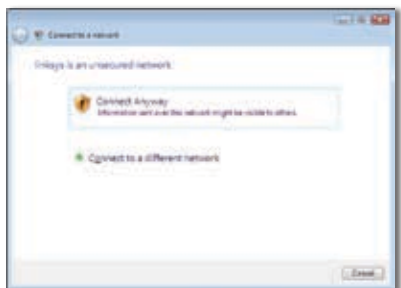
- B.** The first Windows Vista Wireless Network Configuration utility screen appears. Select your network, and then click **Connect**.



Select Network

- C.** If your network has no wireless security, this screen appears. If your network has wireless security, go to step D.

To connect to your unsecured network, click **Connect Anyway** and go to step F.



Unsecured Network

- D.** Enter the security key, WEP key, or passphrase (also known as a pre-shared key), depending on your type of security.

Click **Connect**.



Secured Network

- E.** This screen appears while the Adapter connects to your network. Do not cancel, unless you want to end the installation.

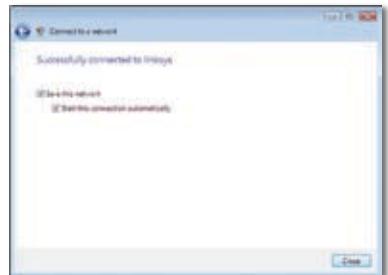


Connecting to Network

- F.** This screen appears when you are connected to your network.

Select **Save this network**, if you want to save your settings.

Click **Close**.



Connected to Network

- G.** The *Set Network Location* screen may appear to help apply the correct settings for your type of location. If it doesn't appear, go to step I.

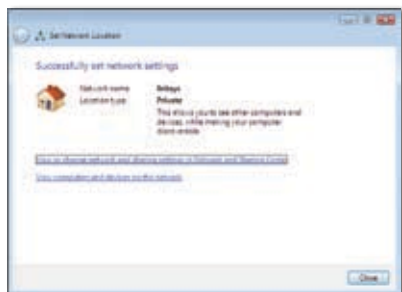
Select **Home**, **Work**, or **Public location**.



Select Network Location

- H.** This screen varies according to the selected location.

Click **Close**.



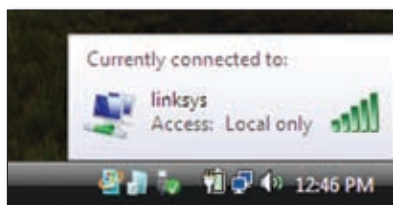
Network Settings Saved

- I.** The Windows Vista Wireless Network Configuration utility icon appears on your desktop's system tray.



Windows Vista Wireless Network Configuration Utility Icon

You can use this utility to configure or change your wireless settings.



Wireless Connection Status



**NOTE:** For help with the Windows Vista Wireless Network Configuration utility, refer to Windows Vista Help and Support, by clicking Vista's Start button  > **Help and Support**.

**Congratulations! Setup is complete.**



For additional information or troubleshooting help, refer to the User Guide on the CD-ROM. Additional support is also available by phone or online.

**24-Hour Technical Support**  
800-326-7114

**Website**  
<http://www.linksys.com>

**Support**  
<http://www.linksys.com/support>

**RMA (Return Merchandise Authorization)**  
<http://www.linksys.com/warranty>

**FTP Site**  
<ftp://ftp.linksys.com>

**Sales Information**  
800-546-5797 (800-LINKSYS)



Linksys is a registered trademark or trademark of Cisco Systems, Inc. and/or its affiliates in the U.S. and certain other countries. Copyright © 2007 Cisco Systems, Inc. All rights reserved. Other brands and product names are trademarks or registered trademarks of their respective holders.

**LINKSYS®**

A Division of Cisco Systems, Inc.

[www.linksys.com](http://www.linksys.com)