

NetShell

Version 2.5b

User's Guide

February 2011 © Babu Software, All rights reserved.

This document is for use with the NetShell. Reproduction, transfer, distribution or storage of part or all of the contents in this document in any form without the prior written permission of Babu Software is prohibited.

1.0 Introduction

This document describes the NetShell.

2.0 Getting Started

This document describes the NetShell :

NetShell support GSM mobile network, which is used for sending and receiving SMS (Sort message service) of GSM mobile network to mobile client (GSM mobile network users). Service client use the services of server by sending request to NetShell. The system is multi user Client-server system. Server is running and listening specific port (TCP/IP Port). Users sign in to server by providing their authentication information (user id and their password).

2.1 Overview

NetShell is Net 2 Mobile SMS Gateway.

2.2 Features

Multi User Profiles
Acknowledgement (Delivery Report)
Dynamic Configuration
Support Remote and Local web/desktop client
Mobile Number Independent
Support Send/Receive Message
Credit Counter
Credits Rules
Blocked Rules
Message Filter by keyword

2.3 About the Package Components

Here is a brief description of the components contained in the packages listed above:

- NetShell Service 2.5

3.0 Software Requirements

- **Software Requirements**
Windows XP/2003/Vista/2008/Windows 7
Microsoft Framework 3.5 SP1, (freely available from the Microsoft web site at www.microsoft.com.
Microsoft Framework 3.5 SP1 is highly recommended.)
Microsoft Internet Explore 6.0
Internet Information Server IIS 5.1 (Web Server and SMTP Server)
- **Hardware Requirements**
800 MHz Pentium II processor
50 MB disk space
256 MB RAM
64K colors, 16 bit resolution
Keyboard and mouse
One Activate Mobile Phone/ Modem [GSM modem 03.40 or GSM modem 03.38] (one local modem)

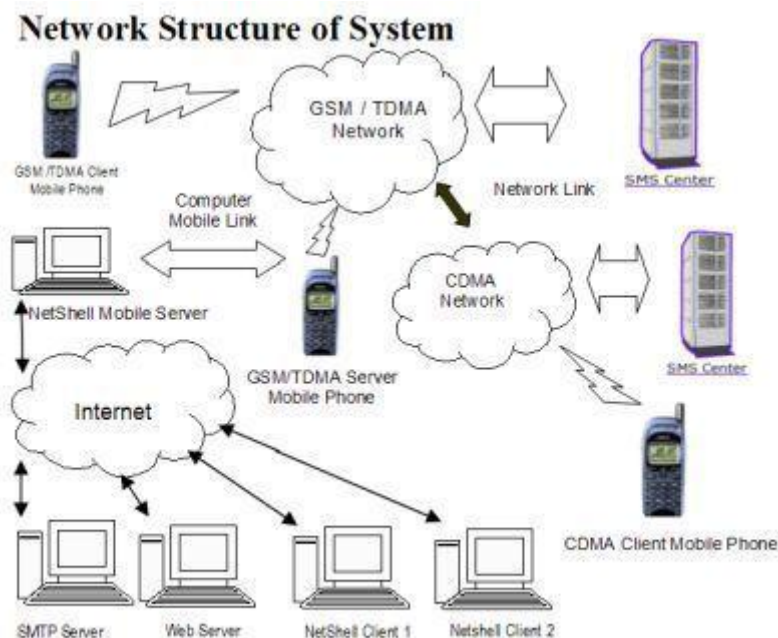
3.1 Server Comparable Mobile Phone

- GSM modem 03.40 or GSM modem 03.38

3.2 Modem Computer Connectivity Requirement

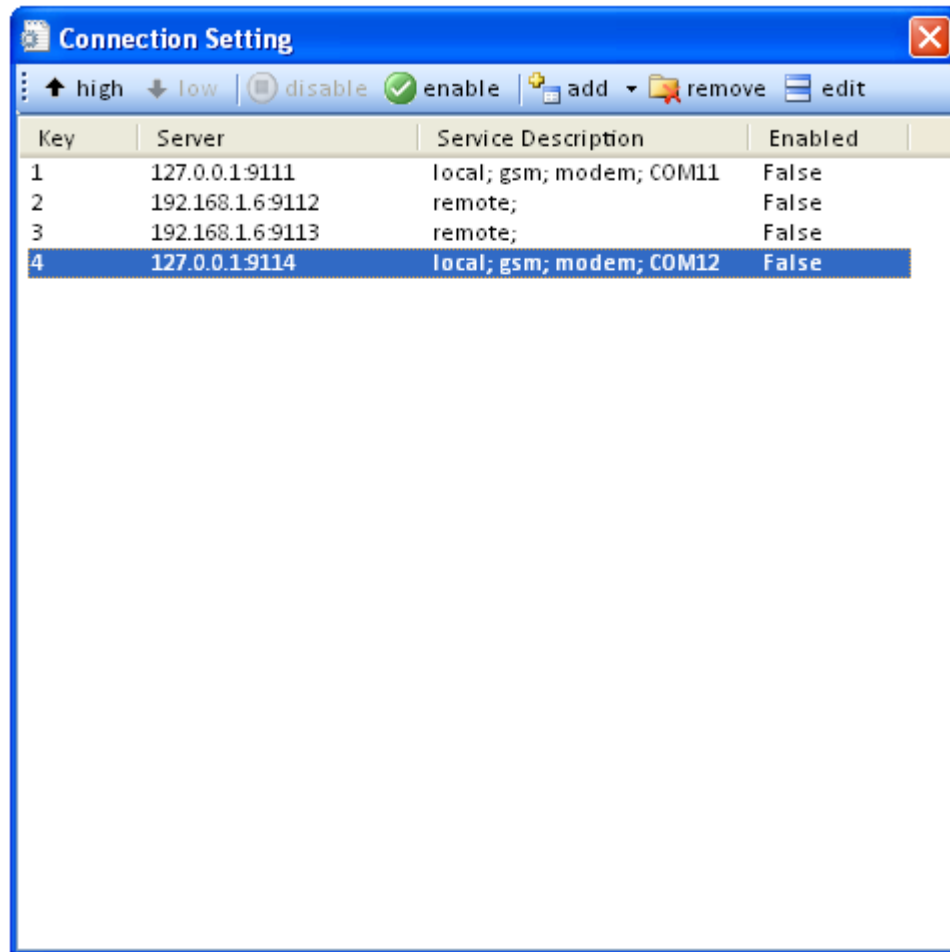
- Serial connection cable
- IrDA connection
- Compatible Bluetooth connection
- USB connection cable

4.0 Modem Connectivity and Network Structure of System



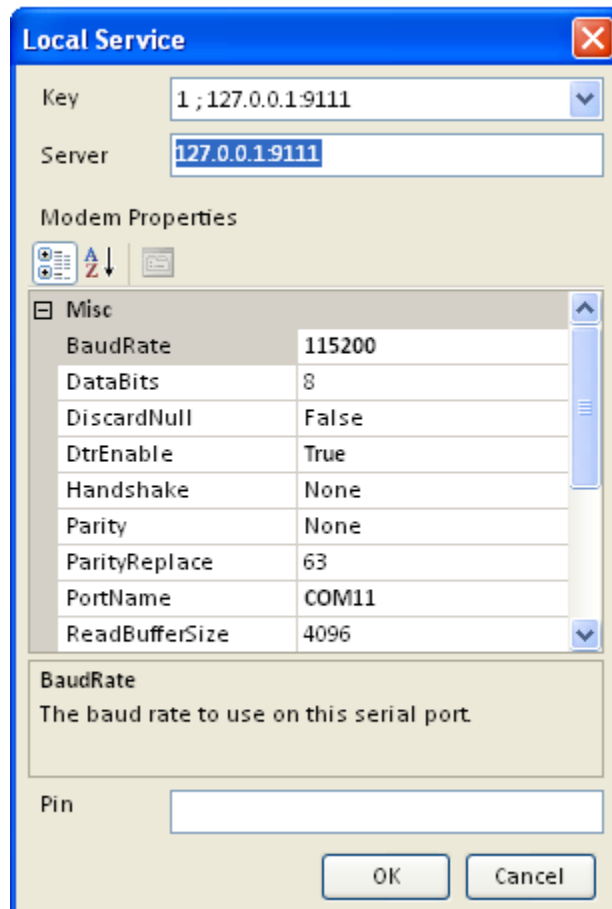
Screen 1: NetShell Network Structure

Netshell support multiple local or remote modem it connect modem via TCP/IP, in connection setting , you have to define ip address / port of netshell modem server (Modem Property) (**netshell has inbuilt modem server, local modem server run automatically no need to run separately, while remote modem server need to run manually**).



Screen 2: Connection Setting

IP address 127.0.0.1 refers to be local modem address while other addresses refer to be a remote modem address. Local modem set to work with default setting while remote modem can configure as need, local modem baud rate set to 115200 (Port Speed) please verify your modem work with default baud rate.



Screen 3: Local Modem Connection Setting (modem Configuration)

5.0 FAQ

Q. Please provide default setting information?

A. default setting of NetShell given blow

Administrator User/Password	system@netshell/manager
SMTP Server	localhost
Location of service manager	http://localhost:80/netshell/
Location of Setting file	C:\Documents and Settings\All Users\Application Data\Babu Software\netshell\
Location of smsroot	C:\Documents and Settings\All Users\Application Data\Babu Software\netshell\smsroot\
Netshell default port	8020 TCP

Netshell Configuration File server.exe.config

Location of configuration file C:\Program Files\Common Files\Babu Software\NetShell\

Q. Can Change of NetShell port is possible?

A. yes change of port is possible.

Q. How to change NetShell port?

A . Open Configuration file "server.exe.config" in notepad (For Example change port from 8020 to 9920. follow the instruction

Change value from

<channel ref="http" port="8020" /> to <channel ref="http" port="9920" />

After Change Port you have change client (Service manager, EasySMS Netshell , Uploader Webby ,EasySMS NetShell-StarLink) port also. For change of client port flow the readme file.

For service manager open file C:\inetpub\wwwroot\netshell\web.config

Change value from

```
<client url="http://localhost:8020/RemotingSMS">  
<wellknown type="service.netshell.ServiceNeXTservice.netshell"  
url="http://localhost:8020/RemotingSMS/ServiceNeXT.soap" />  
</client>
```

to

```
<client url="http://localhost:9920/RemotingSMS">  
<wellknown type="service.netshell.ServiceNeXT, service.netshell"  
url="http://localhost:9920/RemotingSMS/ServiceNeXT.soap" />  
</client>
```

Q. Remote management of NetShell is possible?

A. Yes remote management is possible.

Open service manage link as <http://<IP ADDRESS>/netshell/> Or www.yourdomain.com/netshell/

6.0 For More Information

For more information about configuring and using the components in the packages, contact

Manoj Yadav

Babu Software

Phone Number: (+91) 9415917612

Or mail to support@bstpl.co.in

Website <http://www.bstpl.co.in>