

Watch 4 Start v1.0 User Guide

By LeeLu Soft 2014

Table of Contents

[Introduction](#)

[Installation](#)

[Start using Watch 4 Start](#)

[What Watch 4 Start is monitoring](#)

[Setting Watch 4 Start](#)

[Selecting actions to trigger](#)

[Starting the monitor](#)

[Live Log](#)

[Command line options](#)

[OS Compatibility](#)

[Freeware License](#)

[Contact](#)

Introduction

When a Microsoft Windows OS starts, it can auto load programs from different locations like special registry keys, special startup folders and initialization files.

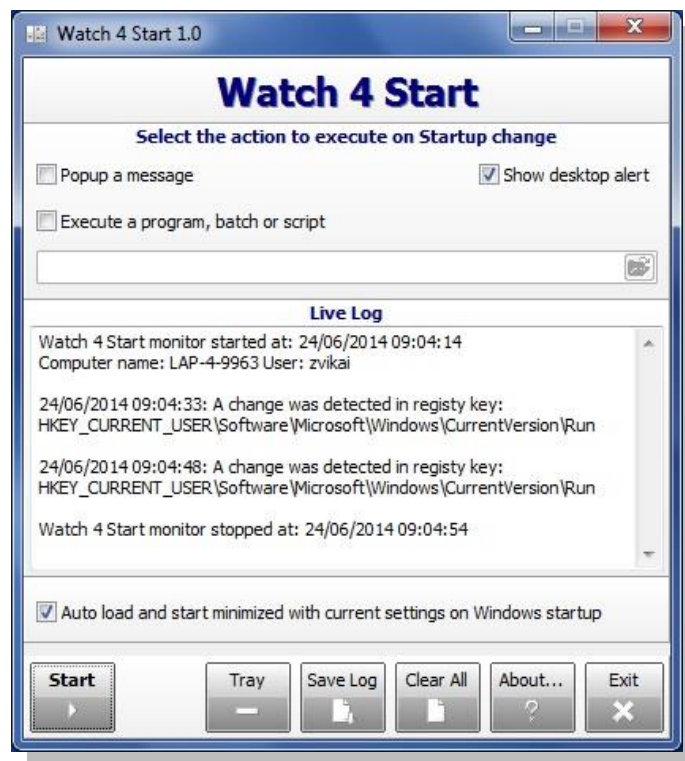
In some cases, applications are adding themselves to those auto loading locations without even asking or notifying the user, and on the next restart, the user is "surprised" to find different applications popping out from nowhere or running in the background without his permission.

Watch 4 Start is a simple to use and powerful monitoring and automation tool to monitor changes in those startup locations.

It is a small, portable, with small footprint and simple to use utility.

Watch 4 Start doesn't prevent or block applications from modifying any of the startup locations, it will just inform you about the changes and will point you the change location. It is your decision if you want to keep the changes or not.

You can also execute actions when a change occurs.



Note:

Modifying the Windows Registry and Initialization files can cause your system to fail on the next reboot or to load with errors, if you are not familiar with those elements it is recommended to use the advice of a professional.

Installation

Watch 4 Start is a portable application, it is distributed in two formats:

- ZIP archive: just extract the files into any folder and execute **W4Start.exe**
- Installation package: follow the installer instructions to install Watch 4 Start.

Watch 4 Start is a portable application, but if you are setting it to auto load on Windows startup, and you wish to move the executable to a different folder, you must open it once in the new location, and uncheck and re-check the option to Auto load on Windows startup so Watch 4 Start will update the registry on his current location so it can auto start correctly.

Uninstall:

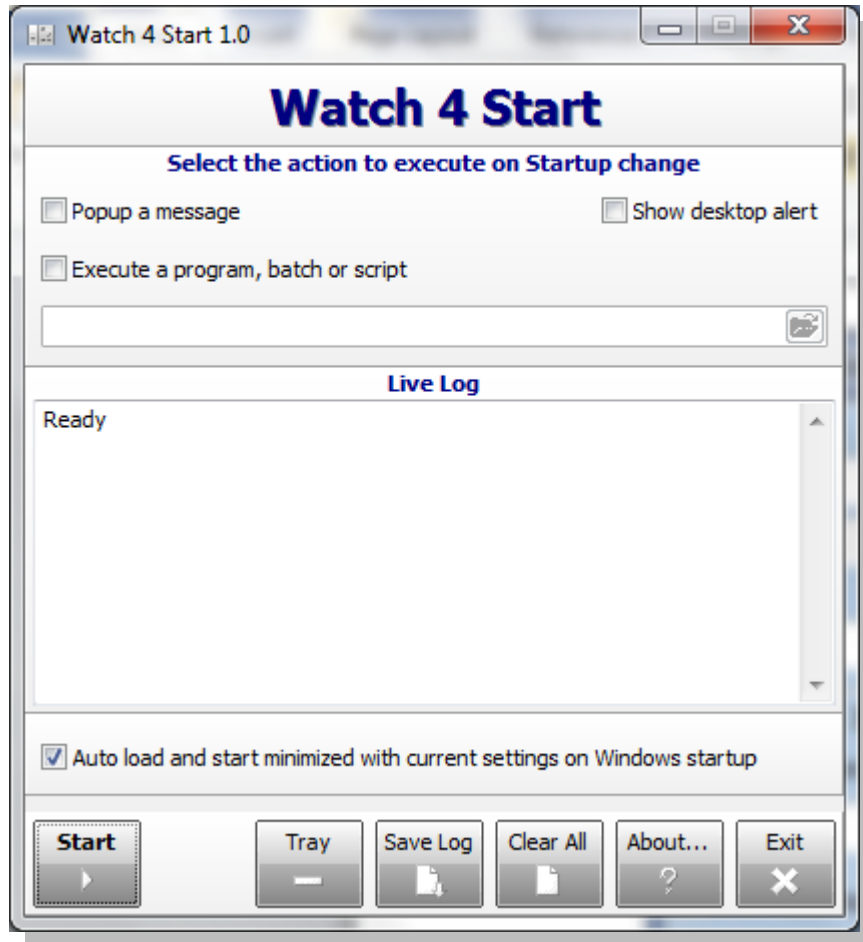
To completely remove **Watch 4 Start** from your computer, execute it once, uncheck the option to Auto load on Windows startup so it will be removed from the registry and then exit and delete the executable and user guide and readme.txt files.

Start using Watch 4 Start

Execute **W4Start.exe** to start using **Watch 4 Start**.



Executing **W4Start.exe** will open the main (and only) screen:



This is the only screen and from here you can set everything in a simple way.

What Watch 4 Start is monitoring

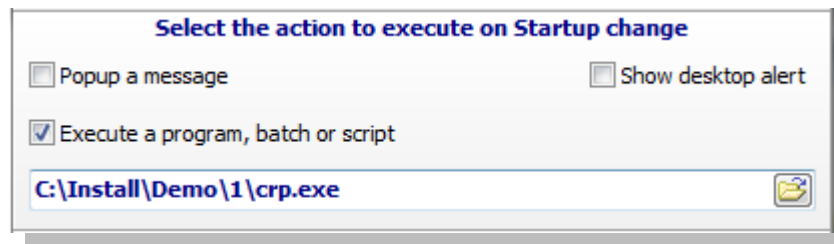
Watch 4 Start is monitoring several registry keys, startup folders and initialization files. You don't need to setup the monitored objects, **Watch 4 Start** will detect them for you and will add them as monitored objects.

Setting Watch 4 Start

Setting **Watch 4 Start** is very simple, it can run without any settings at all, and it will monitor your startup locations and report any changes to the live log which can be saved as a text file. In a normal computer system, this kind of monitor should not create a lot of data in the log, because changes to the startup locations are not frequent. The live log is enabled by default and can't be disabled.

Selecting actions to trigger

Watch 4 Start gives you the option to execute three kinds of actions when any of the startup locations was modified.

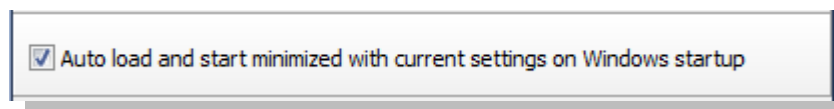


You can select any or all of the actions to trigger on a startup location change:

- **Popup a message** – a popup message will pop up in case of an event, popup messages stay open on screen until the user close them, but they also will hold any further messages and actions by the application, so they are not recommended unless you are seating in front of your computer.
- **Show desktop alert** – Desktop alerts will pop up on the bottom right side of the screen and will fade after 2.5 seconds, they will not prevent any further messages and actions by the application but they will disappear from the screen and will not stay. Clicking on a Desktop alert message will bring Watch 4 Start to the front of you desktop.
- **Execute a program batch or script** – here you can execute something when event occurs, to enable it you need to check this check box and use the edit box to enter or browse and select or just drag and drop a file name that will be executed.

Note: The live log is collecting the data all the time and can't be disabled, so you can run Watch 4 Start without any other actions selected and you will get all the changes info in the live log.

The only other settings option is to set **Watch 4 Start** to load automatically on Windows startup.



This option will automatically load **Watch 4 Start**, start the monitor and minimize it to the system tray every time Windows will start.

Uncheck this option to prevent **Watch 4 Start** from auto loading on Windows startup.

Any settings changes are saved automatically, so Watch 4 Start will load the next time with the last settings.

Starting the monitor

Click on the **"Start"** button and the monitor will start working.

You can also click on the **"Tray"** button to minimize **Watch 4 Start** to the system tray (notification area).

To restore from system tray, just click on the **Watch 4 Start** icon in the system tray (or right click it for a popup menu).

To stop the monitor, use the same button as in start, while monitoring it will show **"Stop"**.

Live log

Watch 4 Start maintains a live log that collects every change in any of the startup registry locations, initialization files and startup folders:



Use the **"Save log"** button to save the log as a text file.

Loading Watch 4 Start from the command line

Watch 4 Start can be loaded directly from the command line or from a batch and auto start minimized using parameters:

To load **Watch 4 Start**, auto-start monitoring and auto-minimize to the system tray:

W4Start.exe -a

Watch 4 Start will auto load and run with the last settings.

OS Compatibility

Watch 4 Start 1.0 is a 32bit application, it was developed on Windows 7 Professional 32bit, it was also tested on Windows XP Professional 32bit.

It was never tested on Windows 64bit systems, it should run but it may not have access to monitor the 64bit machine runs, so it may miss some of the machine runs changes.

LeeLu Soft Freeware License (for free version only)

Copyright 2008 © by LeeLu Soft <zvika.israeli@gmail.com>. All rights reserved

THIS SOFTWARE IS PROVIDED BY THE AUTHOR AND CONTRIBUTORS ``AS IS" AND ANY EXPRESS OR IMPLIED WARRANTIES, INCLUDING, BUT NOT LIMITED TO, THE IMPLIED WARRANTIES OF MERCHANTABILITY AND FITNESS FOR A PARTICULAR PURPOSE ARE DISCLAIMED. IN NO EVENT SHALL THE AUTHOR OR CONTRIBUTORS BE LIABLE FOR ANY DIRECT, INDIRECT, INCIDENTAL, SPECIAL, EXEMPLARY, OR CONSEQUENTIAL DAMAGES (INCLUDING, BUT NOT LIMITED TO, PROCUREMENT OF SUBSTITUTE GOODS OR SERVICES; LOSS OF USE, DATA, OR PROFITS; OR BUSINESS INTERRUPTION) HOWEVER CAUSED AND ON ANY THEORY OF LIABILITY, WHETHER IN CONTRACT, STRICT LIABILITY, OR TORT (INCLUDING NEGLIGENCE OR OTHERWISE) ARISING IN ANY WAY OUT OF THE USE OF THIS SOFTWARE, EVEN IF ADVISED OF THE POSSIBILITY OF SUCH DAMAGE.

Contact:

[LeeLu Soft](#)

<http://leelusoft.altervista.org>