

InstallerXpert 1.2

Getting Started Guide

InstallerXpert Version 1.2 Getting Started Guide

© 2003 Shahab Hamidi Rad. All Rights Reserved.

This document is being furnished for information purposes only to licensed users of the InstallerXpert software product and is furnished on an "AS IS" basis, that is, without any warranties, whatsoever, expressed or implied. All brand and product names are trademarks or registered trademarks of the respective holders. Microsoft Windows, Windows NT, the Windows logo, and the Windows NT logo are registered trademarks of the Microsoft Corporation.

Information in this document is subject to change without notice. The software described in this document is furnished under a license agreement. The software may be used only in accordance with the terms of that license agreement. It is against the law to copy or use the software except as specifically allowed in the license. No part of this document may be reproduced or retransmitted in any form or by any means, whether electronically or mechanically, including, but not limited to the way of: photocopying, recording, or information recording and retrieval systems, without the express written permission of Shahab Hamidi Rad.

InstallerXpert 1.2 Getting Started Guide

Initial Publishing July 2003

Printed in the USA

Visit InstallerXpert Web site at: www.InstallerXpert.com

July 2003

Dear InstallerXpert User:

Thank you for choosing InstallerXpert 1.2. The Getting Started Guide and Online Reference compose the comprehensive InstallerXpert documentation set.

For more information, please visit the InstallerXpert Web site at www.InstallerXpert.com. The latest InstallerXpert news, hot installation topics, and downloadable files are now available on the web site.

I welcome your comments and suggestions about InstallerXpert and its documentation, or any other feedback you might have. Please contact me through the Support link of the InstallerXpert Web site at www.InstallerXpert.com.

Thank you for using InstallerXpert.

Sincerely,

Shahab Hamidi Rad

Table of contents

Chapter 1: Welcome to InstallerXpert

Chapter 2: Installing InstallerXpert

Chapter 3: Setup Fundamentals

Chapter 4: Using InstallerXpert

Chapter 5: Tutorial

Chapter 6: Frequently Asked Questions

Glossary

Chapter 1: Welcome to InstallerXpert

Welcome to InstallerXpert! You have selected one of the simplest and most effective setup development software available. This chapter describes some of the many features and benefits of InstallerXpert, and provides information on how to get help when you need it.

InstallerXpert Features

Thank you for choosing InstallerXpert 1.2! InstallerXpert provides you with a simple way to create complete installations in a couple of hours. Some of the many InstallerXpert 1.2 features are summarized on the following Paragraphs.

- Support for a wide range of operating systems

InstallerXpert 1.2 lets you support Windows 95, windows 98, Windows NT 4, Windows ME, Windows 2000, and Windows XP. You can conditionally install certain files or the entire installation based on whether your end-users are running any of the operating systems mentioned and you don't need to worry about the existence of Microsoft Windows Installer Service on the end-user's computer!

- Get rid of Microsoft Windows Installer Service

Although InstallerXpert does not use the Microsoft Windows Installer service, it can perform almost all of its functions. By not using the Microsoft Windows Installer service, InstallerXpert can provide the following features that are not available with Windows Installer-based setup authoring programs.

Smaller size of a complete setup program

A setup program created with InstallerXpert does not include the Windows Installer Service, and it means smaller setups.

Ability to create complete setups on floppy disks

Although Microsoft ships Windows 2000, Windows Me, and Windows XP with the Windows Installer service, all other operating systems to date do not ship with this service. Therefore, if you use a setup program that uses Windows Installer service, the installer service must be installed before your setup can run. There are two versions of this setup—one for Windows NT 4.0 and one for Windows 9x. Each of these setups requires more than 1.4 MB of disk space. Because of these file size requirements, you cannot distribute your setup program on a floppy disk if you need to distribute the Windows Installer service setups as well.

In addition the ".msi" file used by Windows Installer service cannot be spanned across multiple disks and it must reside on the first disk of your setup. Therefore, if you want to include all of your files in one compressed ".msi" file, it might not fit on one floppy disk.

With InstallerXpert, you can distribute setups on floppy disks, regardless of how large your source files may be.

Faster installation and uninstallation.

A setup created by InstallerXpert doesn't have the overheads related to Installing, loading, and initializing the Windows Installer Service. This makes it much faster in installing and uninstalling.

- Easy-To-Use Interface

InstallerXpert makes creating setups easy. You do all of the works in InstallerXpert pages. Each page details a specific part of setup creation from naming your project to building the final setup files. InstallerXpert does it all in a familiar Windows environment, fully enabled with drag-and-drop and context menu functionality.

No scripting is required in InstallerXpert. With the InstallerXpert environment and tracking through pages, you will be completing setups quickly and easily.

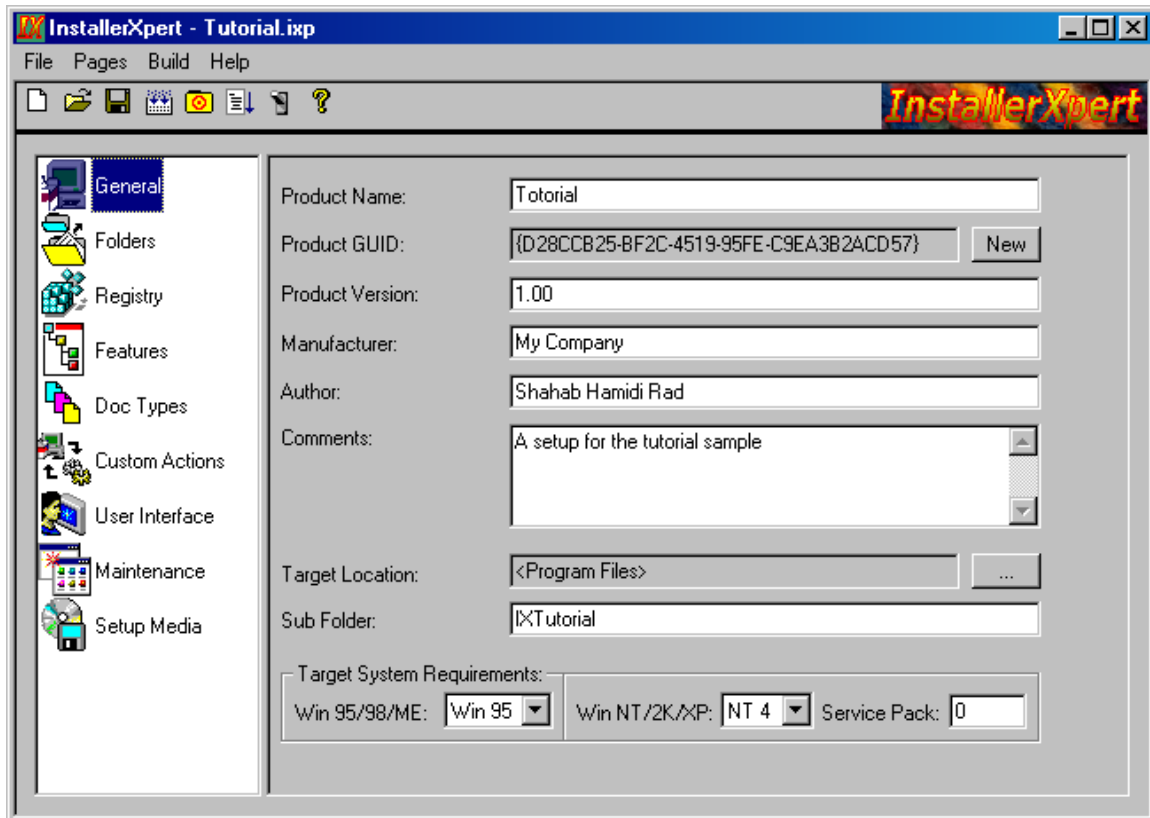


Fig. 1-1: The InstallerXpert user interface

- Extensibility with Custom Actions

If you require specialized installation steps, you can add a Custom Action to predefined points in the run-time dialog sequence. Custom Actions are DLLs, or EXEs that you launch to perform additional tasks during your setup, such as playing media files or displaying custom dialogs. When you use a DLL as a Custom Action, you can access the runtime information in the setup program and change them from within your DLL.

Your Custom Actions can even be a bitmap file, an HTML file, a word document or any other type of file, which is associated with a known application on end-user's computer. Setup will open the specified file with its associated program when running on the target machine.

- Dynamic File Linking

Instead of having to add every file individually, or add files again when they change, InstallerXpert 1.2 lets you dynamically link to a folder. All or selected files in the folder are added to your setup when it is built based on wildcard characters. With dynamic file linking, you can add, change, and delete files from a folder and when you build your setup, all of the changed and newly added files are included in your setup. This is especially handy when you want to make a single executable file from a directory structure for backup purposes.

-Ability to be used as a backup utility

With dynamic file linking and its user-friendly interface, InstallerXpert can make single-file, self-extracting backups. You can easily compress the selected files in a directory structure to a single executable file for backup and/or software/data transfer purposes from one computer to another. You can easily control how the existing files will be overwritten, because InstallerXpert has a complete set of overwriting methods.

- Online Help Library

InstallerXpert 1.2 has a comprehensive set of help topics. These context-sensitive help topics contain information relevant to the current page, or dialog box.

When you have questions about InstallerXpert, first consult the online InstallerXpert Help Library. Help is available from the InstallerXpert Help menu, the help button in the dialog boxes, and the F1 key.

The Help Library is your complete user's guide for InstallerXpert. This library contains reference materials that cover every aspect of your setup development.

Online help is available for every dialog box, and page in the InstallerXpert. Press the F1 key or click the Help button to view the help for the current dialog box.

- Web-Based Help

Consult the InstallerXpert Web site (www.InstallerXpert.com) for immediate access to an extensive selection of useful information. The site is a comprehensive resource of free support materials. This information is available to you 24 hours a day, 7 days a week.

Chapter 2: Installing InstallerXpert

This chapter contains system requirements for InstallerXpert 1.2 and information about the installation and uninstallation procedures. It also instructs you on how to validate InstallerXpert.

System Requirements

For successful installation of InstallerXpert, your computer must meet the following minimum system requirements:

- Windows 95*, Windows 98, Windows Me, Windows NT 4.0**, Windows 2000, or Windows XP.
- CPU: Pentium-class PC (300 MHz or higher recommended)
- RAM: As required by the operating system.
- 10 MB of free disk space
- Video: Super VGA monitor (with the screen resolution set to at least 800 x 600)

* InstallerXpert Help Library is not available for Windows 95.

** InstallerXpert Help Library is available for Windows NT 4, only if Internet Explorer 4.00 or later is installed.

Installation Procedure

To run the InstallerXpert setup program put the InstallerXpert CD into your CD-ROM drive. The setup program will automatically start and guides you through the next steps of installation.

Uninstallation Information

To Uninstall InstallerXpert, do the following:

1. Select Control Panel from Settings under the Windows Start menu.
2. When the Control Panel opens, double-click the Add/Remove Programs icon.
3. From the Add/Remove Programs dialog, select InstallerXpert.
4. Click Remove.
5. Follow the directions in the wizard for uninstallation.

Register Your Software

InstallerXpert program comes with 30 days of trial period. To use InstallerXpert after the expiration of this trial period, you must register your copy of InstallerXpert.

To get your validation code, you need to provide your Product ID, which is an 18-character alphanumeric string. Send your Product ID by email, to get the validation code for your copy of InstallerXpert. Validation Code is a 20-character alphanumeric string.

After getting the validation code you must enter it in the validation dialog box accessible from the help menu (or from the splash window). Once you entered the validation code you can use InstallerXpert forever. For more information see the InstallerXpert web site at: www.InstallerXpert.com

Chapter 3: Setup Fundamentals

This chapter explains the different features of setups and how they work. You will see how InstallerXpert has implemented all these features without using Windows Installer Service.

What is a Setup?

A setup program installs an application onto an end-user's computer. It performs several different functions as described in the following paragraphs.

Perform File Transfer

File transfer involves copying files from the source medium, such as a CD or a floppy disk, to a local drive on the end-user's machine. Depending on the configuration the end-user chooses, all or some of the files may be transferred to the local drive. The setup may display a status bar to show the progress of the file transfer process.

Display User Interface

The user interface of a setup provides information and setup configuration options to the end-user. Through the user interface, an end-user can choose to install only part of a product, view a license agreement, or provide information to the setup that may be necessary to ensure proper installation configuration. The user interface can be adapted to meet your installation needs. For example, you can prompt end-users to select the preferred setup type before starting the installation.

Create Shortcuts

Shortcuts are links to files and applications that the setup creates on the end-user's machine. Shortcuts are usually placed on the desktop, or in the Start menu of the target machine to provide quick and easy access to a program or its files.

InstallerXpert can also configure the shortcuts to be placed on the quick launch toolbar on the task bar of Windows 98, ME, 2000, and XP.

Register File Associations

If your product uses a distinct file type, you must register the file type for your application on the end-user's system to ensure your end-user's system opens the file with the proper application.

For example, InstallerXpert creates and uses the InstallerXpert Project files with the extension ".ixp". The installation program for InstallerXpert, registers this file type during the setup. After installing InstallerXpert, if you right-click on a file with the ".ixp" extension, you will see a special command (Open with InstallerXpert) in the context menu. The system displays the ".ixp" files with a predefined icon, and if you double click on an InstallerXpert project file, the operating system automatically launches InstallerXpert and opens the specified project.

Register COM, COM+, and DCOM Files

COM servers (such as ActiveX, COM, and COM+ files) require special registration so that applications can access the files' interfaces. These EXEs, DLLs, and OCXs contain self-registration functions that are invoked to register the files during installation, or unregister them during uninstallation. With InstallerXpert you can specify the files you want registered/unregistered, during installation/uninstallation.

Register Product for Uninstallation

To uninstall a product, the operating system must know that the product is present. To accommodate this, a setup registers an application with the operating system so that it can be easily uninstalled. Much of the information registered in this process is available to the end-user through the Add/Remove Programs dialog box (on Windows 2000 systems).

For example, technical support contact information, product update information, product version, and product publisher information are all registered in this process.

Componentized Installation

Your product can be installed on a feature-by-feature basis. For example, if you have split your setup into two features "Program Files" and "Help Files", your end-users can choose to install only "Program Files" and not "Help Files". Your users can also uninstall features as necessary without removing your entire application. This aspect of InstallerXpert is especially convenient for end-users who have limited hard drive space.

Single File

All of your setup files can be streamed into a single executable file for easy distribution. Because you do not need to ship your files separately from the installer package, this makes deployment much less complicated.

User-Accessible Information

The Add/Remove Programs dialog box in Windows 2000 systems provides information about installed products. This information includes links to Web sites that offer support for the product and sites that host product updates. The software publisher and product version number are also displayed here. InstallerXpert provides support for these general information tables, making it easier for you to pass information on to your end-users.

Clean Uninstallation

Since the InstallerXpert maintains a database of all features installed and all changes made by the setup, uninstalling programs is much more reliable.

Repairing a corrupted setup

InstallerXpert can repair an installation if some files or registry information are lost accidentally. In repair mode, setup compares all information in registry and files on the end-user's computer with their original versions on the installation source medium and copies the missed files and registry information.

Chapter 4: Using InstallerXpert

InstallerXpert provides a complete, user-friendly environment for creating your setups. This environment provides a list of pages that you enter information as you define the characteristics of your setup. This chapter explains these pages and gives you the information you need to begin creating setups of your own.

InstallerXpert Project File

The InstallerXpert project file is the file that stores all of the information required to build your setup. The information that you enter into the various pages is saved to this file, including your setup's user interface properties, application system requirements, and location of files.

Tour of the InstallerXpert environment

This section explains InstallerXpert environment and how you use it to create setups. The terms and concepts presented here appear throughout the remainder of this guide.

- Toolbar

Like many other Windows programs, InstallerXpert has a toolbar. The toolbar contains shortcuts to commonly used functions. The following functions can be accessed by clicking on the button shown.

-  The New button creates a new project.
-  The Open button opens an existing project. The Open InstallerXpert Project dialog prompts you to browse to the desired file.
-  The Save button saves the current project to the location and with the file name that you specified when you created the project.
-  The Build button builds your setup project into a functional setup. It first activates the Setup Media Page.
-  Opens the Destination Directory specified in the Setup Media Page.
-  The Run button builds and runs your setup on your computer, going through all dialogs, installing files, and making any specified system changes as if you had run the setup by double-clicking the setup executable.
-  The Test button runs the user interface portion of your setup, but does not install any files or make any system changes unless those changes are part of a Custom Action.
-  The about button opens the "About" box of InstallerXpert, which displays information about your copy of InstallerXpert.

- The Page List

The Page List lists every page necessary for creating and testing your setup and can be used as a navigational tool. It is located at the left side of InstallerXpert main window and you can resize it using the splitter at its right side.

- InstallerXpert Pages

When creating your setup, you do the majority of work in InstallerXpert pages. These pages are listed in the Page List. To display a page, click on the name of the page in the Page List. Here are the steps to consider when you create a project, and the corresponding pages where you can complete these steps.

- General Page

The first step in creating your setup is to provide basic application information. In the General Page, you specify the setup name and identification number, provide information about your company and your application, and specify default target location and minimum operating system requirements for the end-user's computer.

This page contains several important fields. Target Location (containing the default destination folder on the end-user's computer), and Product GUID (a globally unique identifier for each product) are especially important.

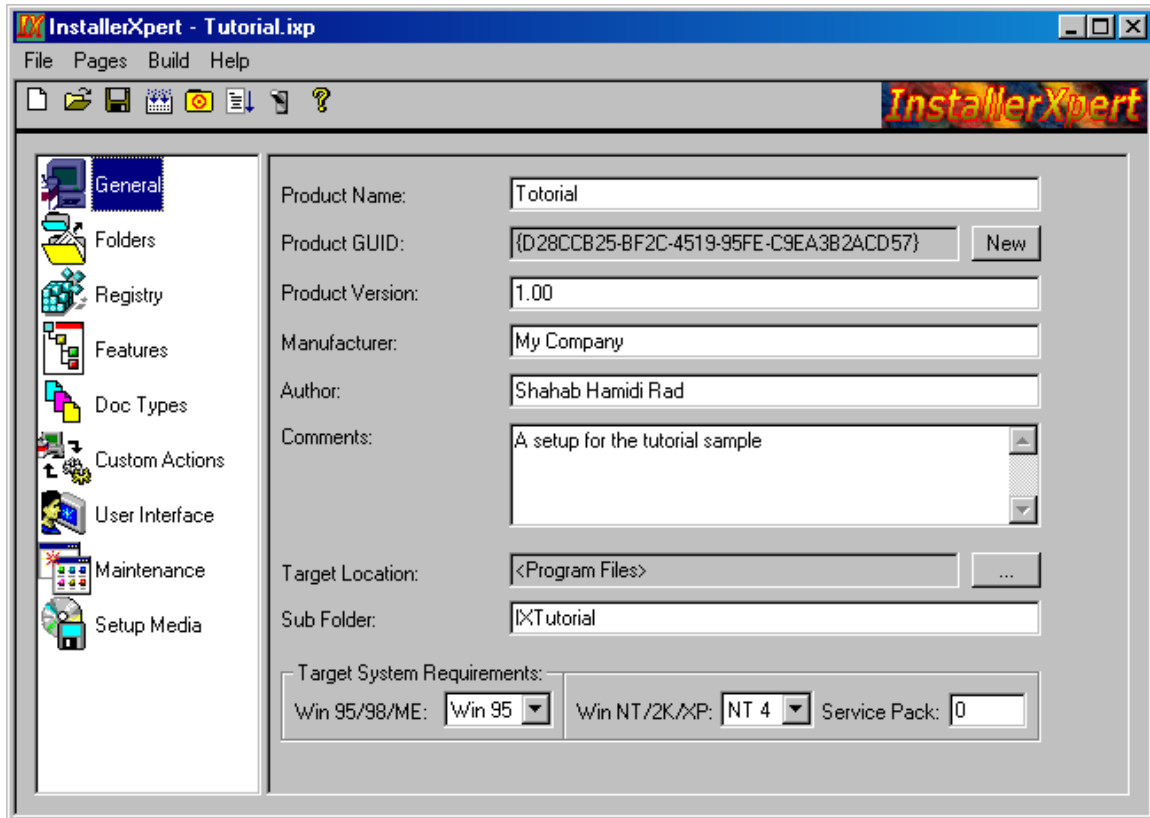


Fig. 4-1: The General Page of InstallerXpert

- **Folders Page**

This page is where you add files, folders, and shortcuts to your setup. Like some other pages in the InstallerXpert, this page has its own toolbar. The Folders Page has two panes the left pane displays the file system on the Target machine. You create folders in this pane. The right pane displays the files and shortcuts you have selected to be copied to a selected folder.

You can add folders, files, and shortcuts using the toolbar buttons and items in the context menus. The context menu is available by right clicking on an item in the left tree view or the right list view.

You can also drag a file or folder from Windows explorer and drop it on an item in the left or right pane.

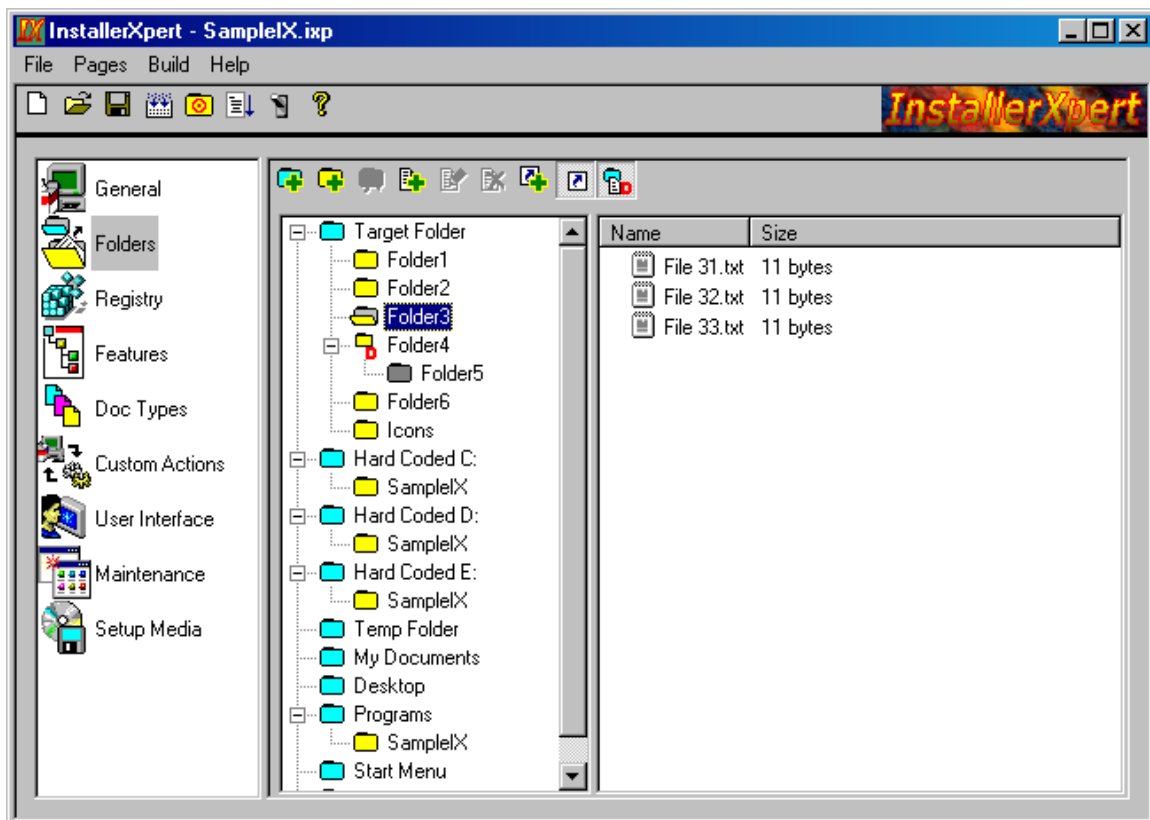


Fig. 4-2: The Folders Page of InstallerXpert

- Registry Page

The Registry Page lets you define the changes you want to make to the target system's registry. Like windows registry editor, this page has two panes. The left pane displays a tree of registry keys on the target machine, and the right pane lists the registry values in a selected key.

If you have all the registry entries organized on your machine, as you would like them to be organized on the target machine, InstallerXpert can copy all registry information from your computer to the project file.

You can add your entries manually, as well as edit any entries you have added.

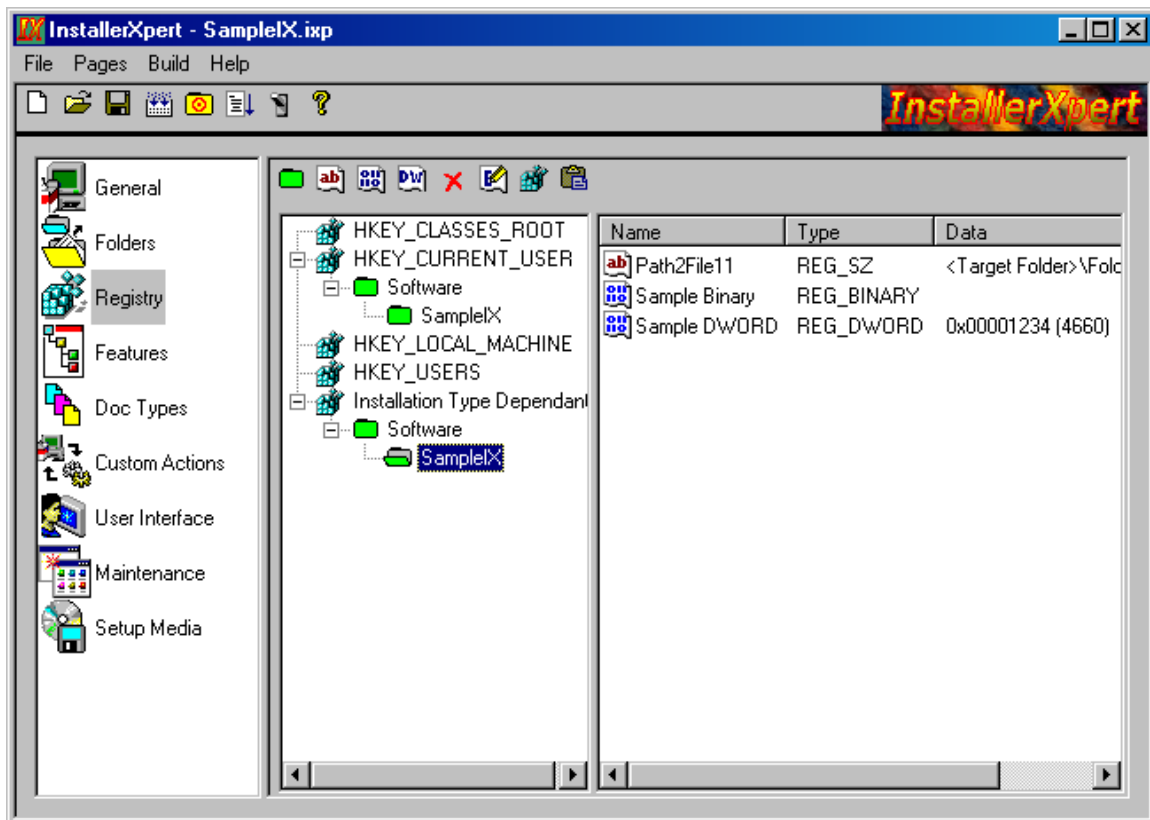


Fig. 4-3: The Registry Page of InstallerXpert

- Features Page

The Features Page lets you add and define the features that your installation contains. A Feature is a logical group of files, registry settings, and other related resources within your application and is used to organize your application data into different units that end-users can select at run time.

The upper part of Features Page displays what you have defined in the two previous pages: Folders Page, and Registry Page. You can use this part as the source of your operations in this page. Using the toolbar buttons (📁) and (🗄️), you can select to display the file system information or the registry information in the upper part of Features Page.

The lower part of Features Page has tree panes:

- The left pane displays the defined features in a tree structure.
- For each feature that you select in the left pane, center pane displays the folders and registry keys that will be installed on the target machine if the end-user chooses to install the feature.
- The right pane lists the files, or registry values that are defined in the selected folder or registry key.

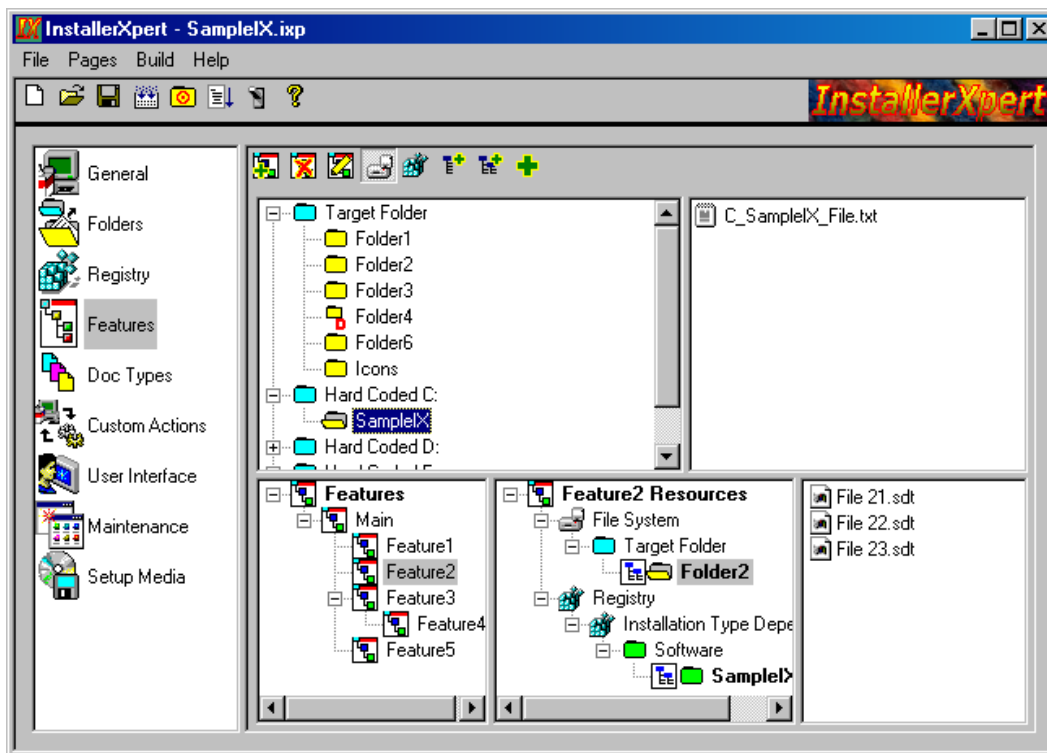


Fig. 4-4: The Features Page of InstallerXpert

- Doc Types Page

The Doc Types Page allows you to associate a specific file type with an executable file that is included in your setup. This page has two list views the upper list view displays the defined document types and the lower list displays the verbs that are defined for the selected document type. A verb is a command that will appear in the context menu of Windows explorer for a document type on the target machine. "Open" and "Print" are the most popular verbs that are used with document types.

Use this page to add, edit, or delete a document type and its related verbs.

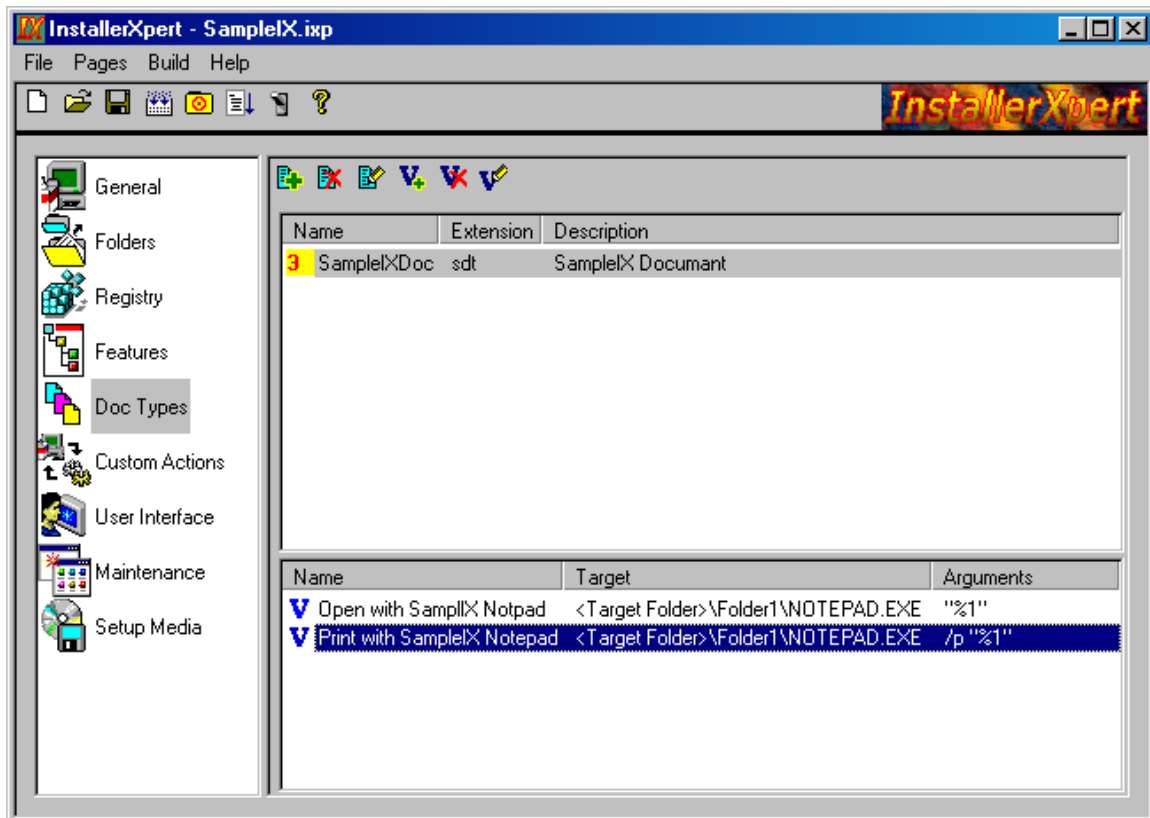


Fig. 4-5: The Doc Types Page of InstallerXpert

- Custom Actions Page

In the Custom Actions Page, you can add DLLs, EXEs, or any other type of file to provide extra functionality, if your setup requires it. You can add any number of Custom Actions to predefined points in your installation, but you must either code these executables or DLLs yourself or have the distribution rights necessary to include them in your setup. You should also provide a Custom Action for uninstallation to undo the effects of your install-time Custom Action.

If you write a DLL to perform your Custom Actions, you will be able to access information in the setup database at runtime. You can even modify some fields in the setup database from within your DLL code.

Custom Actions are optional. You need not use any to have your setup function properly.

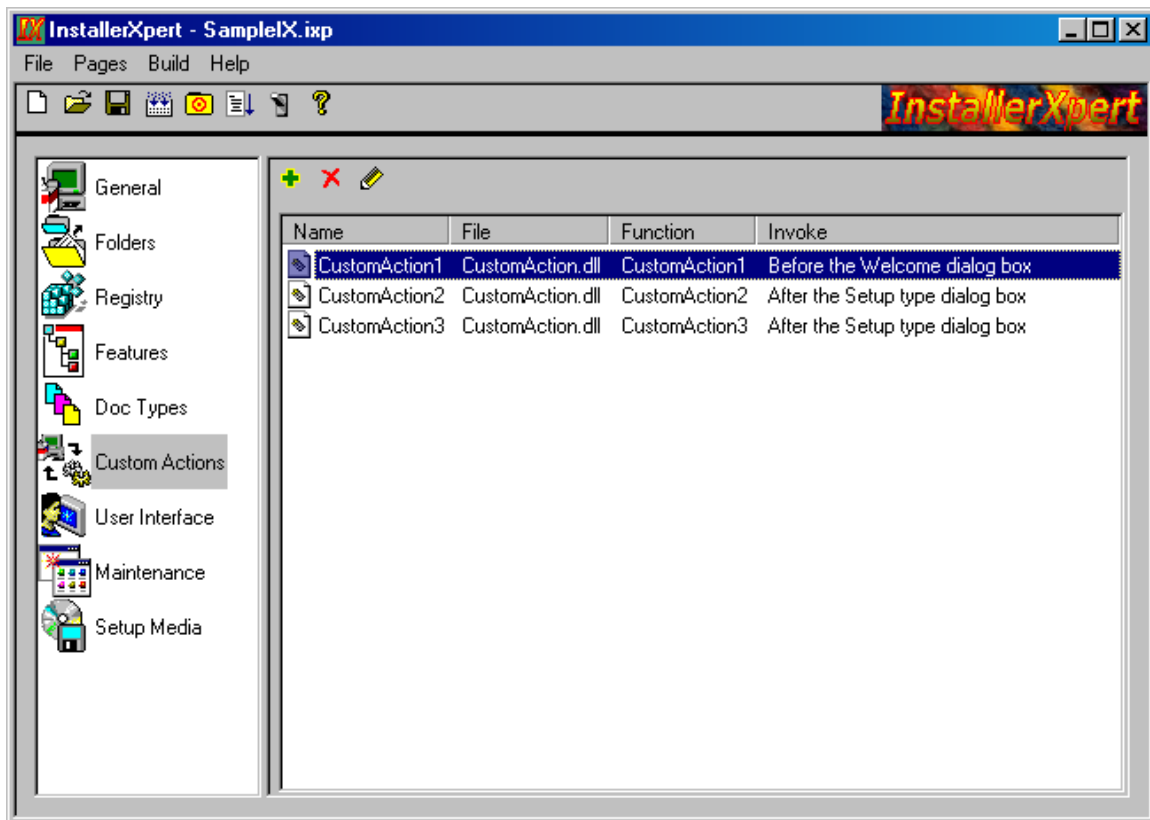


Fig. 4-6: The Custom Actions Page of InstallerXpert.

- User Interface Page

What your customers see during an installation has a substantial impact on how they regard your product and your company. The User Interface Page allows you to determine which of the InstallerXpert standard end-user dialogs your customers see during an installation. This page has a list view that lists different “categories” of the user interface.

The “General” category defines general settings related to the user interface of your setup. For example, it allows you to specify an image to be used as banner for all dialogs. This eliminates the need to indicate an image for each dialog separately. If you want a particular dialog to display a different image, you can modify “Banner File” entry for that dialog.

There is a category for each dialog in the setup. Some of these dialog boxes are required for all setups and cannot be removed. When a category related to a dialog is selected, you can choose to display the dialog during setup. You can also define the settings related to the dialog.

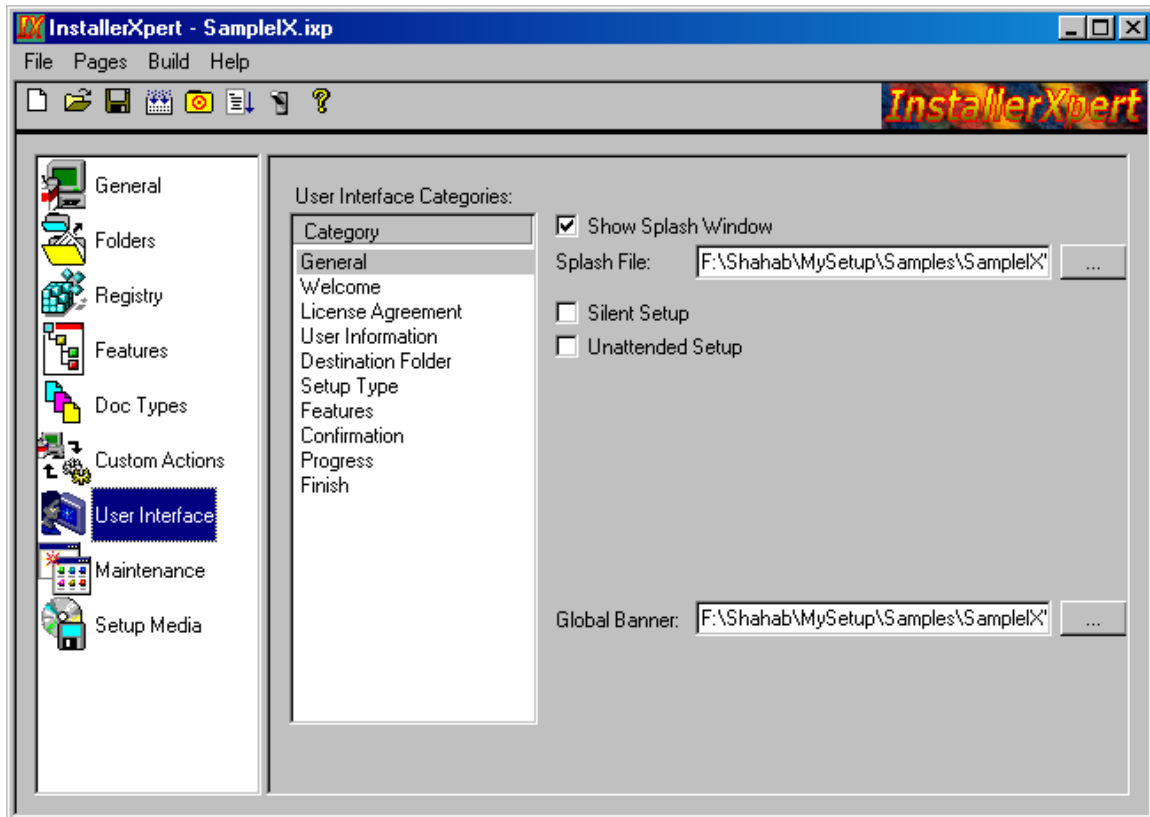


Fig. 4-7: The User Interface Page of InstallerXpert

- **Maintenance Page**

In the Maintenance Page, you specify if you want to register your application with the operating system's Add/Remove programs list. If you choose not to register with Add/Remove programs list, your end-users cannot uninstall or modify your application from their computer. This feature is useful when you are making a project for backup purposes.

You can also determine the information that will appear in the Add/Remove Programs list. Including a link to your company's web site, a support phone number, and the icon that will appear in the Add/Remove Programs list for your application. You can also choose to disable your end-users to remove, change, or repair your application.

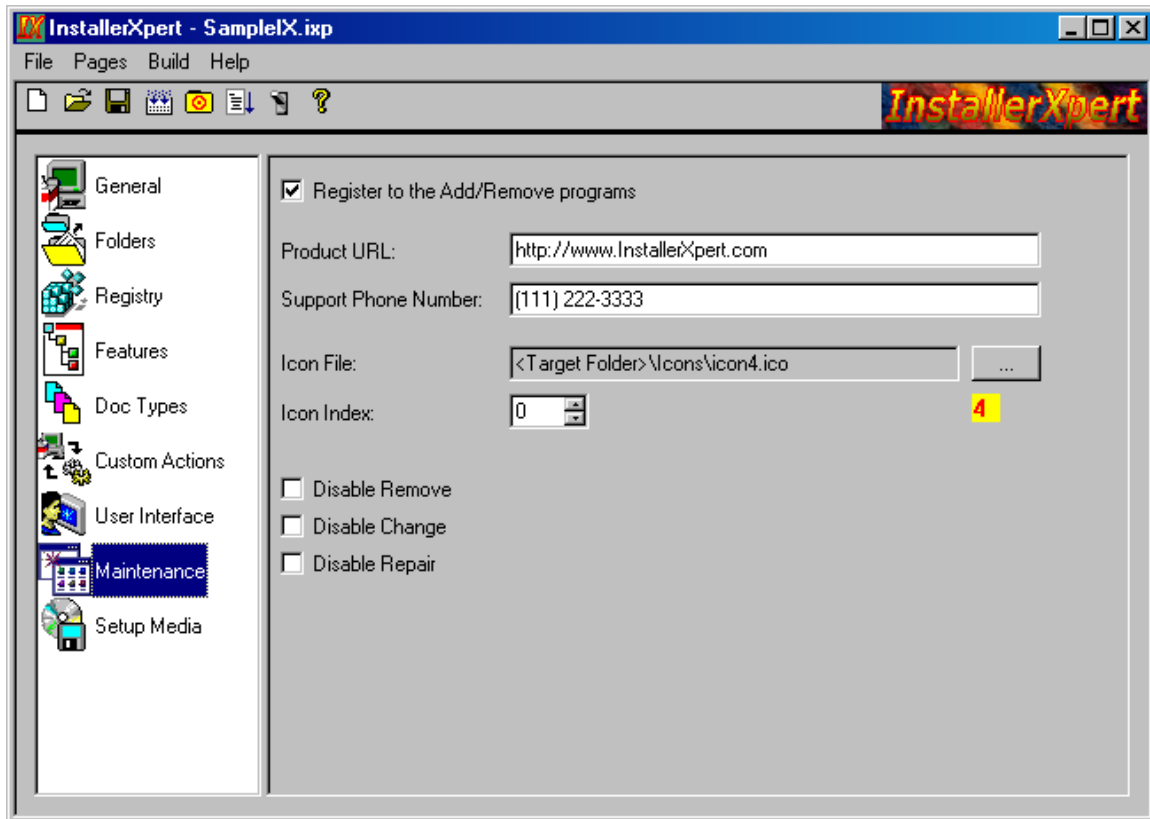


Fig. 4-8: The Maintenance Page of InstallerXpert.

- Setup Media Page

The Setup Media Page allows you to compile the information you have entered into a functional setup. You can select and configure a media format (CD-ROM, Floppy Disk, Single Executable file, or User defined size) and then build your setup. As you build your setup, InstallerXpert provides feedback on your build, including errors and warnings that are listed in the list view in the lower part of Setup Media Page.

You can test your newly built setup to ensure everything goes as planned. You have two options: Run Your Setup or Test Your Setup. If you run your setup, it performs exactly as if you had double-clicked the setup executable. All files are installed, all dialogs appear, and all Custom Actions execute. If you test your setup, no changes are made to the target system; only the user interface and any Custom Actions you have included execute. This second option is useful if you want to test how your setup looks without actually making changes to your system.

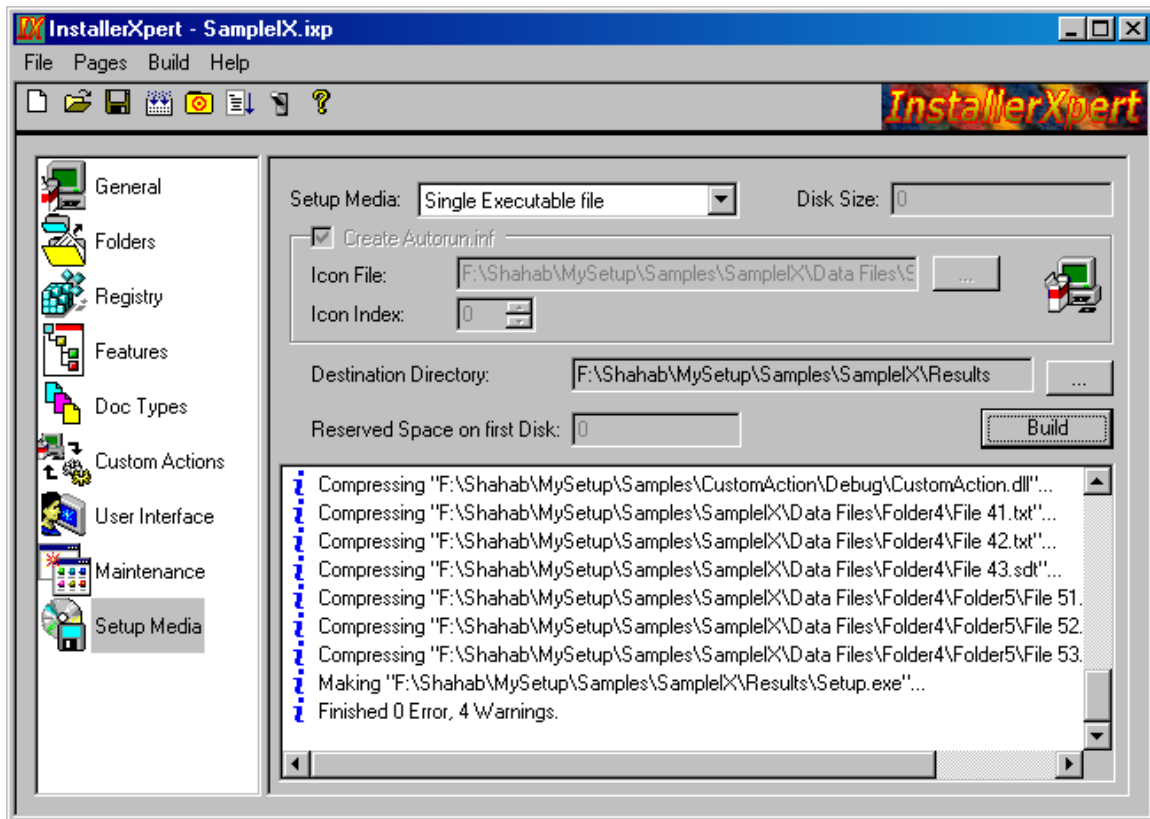


Fig. 4-9: The Setup Media Page of InstallerXpert.

Chapter 5: Tutorial

This chapter is designed as a tutorial that you can work along with at your computer. It takes you step by step through creating a sample project using different pages of InstallerXpert.

Overview

This tutorial is designed to walk you through building a sample project, using the InstallerXpert pages to guide you through the process. All of the files needed are located in the "\\Samples\\Tutorial\\Data Files" subfolder of your main InstallerXpert program file folder.

To begin the tutorial launch InstallerXpert and do the following:

General Page Settings:

1. Select the General Page from the Page List.
2. Type the name of the product ("Tutorial"), in the "Product Name" edit box.
3. In the "Product Version" edit box enter 1.00
4. In the "Manufacturer" field enter the name of your company.
5. Enter your name in the "Author" field.
6. Enter "A setup for the tutorial sample" in the "Comments" field.
7. Define the default destination on the target machine to be: "<program files>/IXTutorial". To do that:
 - i) Click on the browse button next to the "Target Location" edit box, and select "Program Files" from the list.
 - ii) In the "Sub Folder" edit box enter "IXTutorial".
8. Select Target system requirements: Windows 95, Windows NT 4, Service pack 0. Fig. 5-1 shows how the General Page of InstallerXpert should look like.

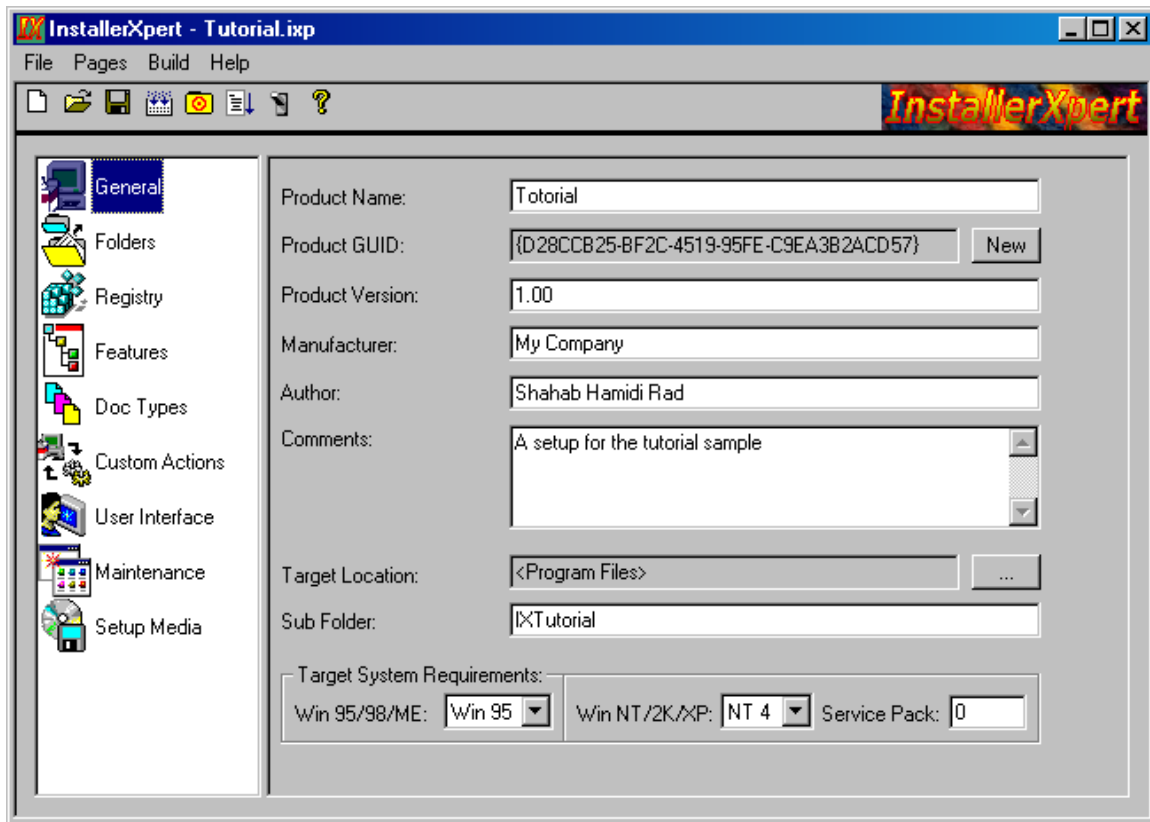


Fig. 5-1: The General Page settings for the Tutorial project.

Folder Page Settings:

1. Select the Folders Page from the Page List.
2. Add the main executable file to the Target Folder. You can do this in any of the following ways:
 - Right Click on the "Target Folder" item, and select the "Add Files" command from the context menu. Then browse to the folder "\\Samples\\Tutorial\\Data Files", and select the "Tutorial.exe" and four ".txt" files.
 - Select the "Target Folder" in the tree view and click the "Add Files" button (📁➕). Then browse to the folder "\\Samples\\Tutorial\\Data Files", and select the "Tutorial.exe" and four ".txt" files.
 - In the windows explorer, browse to the folder "\\Samples\\Tutorial\\Data Files". Then drag "Tutorial.exe" and four ".txt" files and drop them on the "Target Folder" item.
3. Add a shortcut that will be placed on the end-user's desktop. To add this shortcut follow these steps:
 - i) Right Click on left pane of Folders Page, and select "Add Special Folder" from the context menu.
 - ii) Select "Desktop" from the list and click "OK". A folder named "Desktop" will appear in the left pane.
 - iii) Right Click on the "Desktop" folder and select "Add Shortcut" from the context menu. The "Select File" dialog opens (Fig. 5-2), and asks you for the target file of the shortcut. Select the "Tutorial.exe" and click "OK".
 - iv) The "Add New Shortcut" dialog box appears. (Fig. 5-3)
 - v) In the Name field enter "InstallerXpert Tutorial".
 - vi) Leave other fields as they are. See how InstallerXpert initializes most of the fields for you.
 - vii) Click the "OK" button to return to the Folders Page. The Folders Page should look like Fig. 5-4

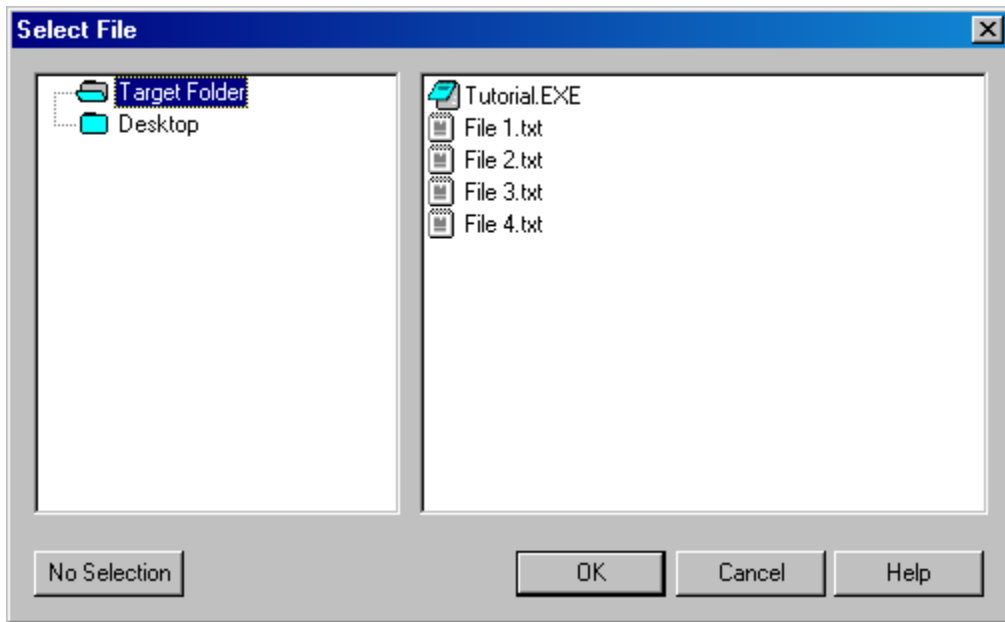


Fig. 5-2: The "Select File" dialog box.

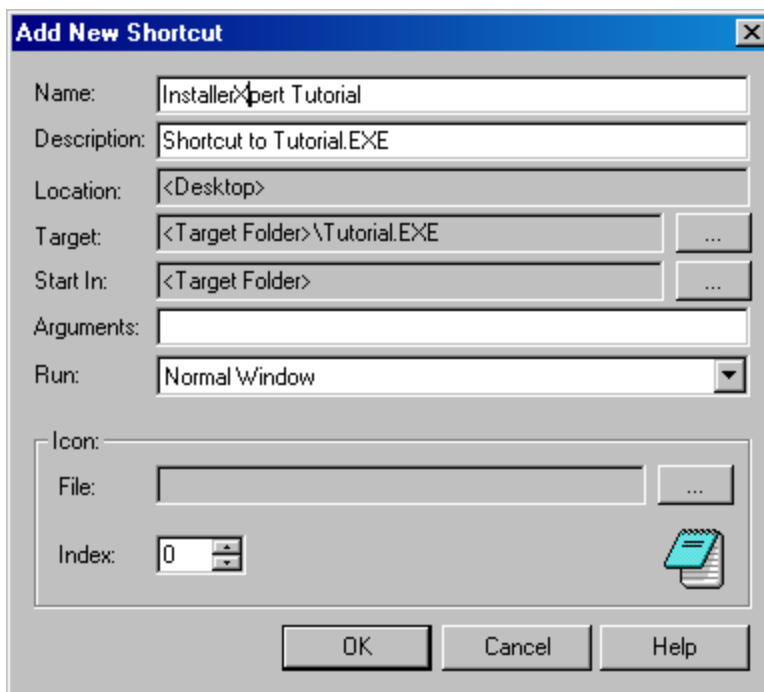


Fig. 5-3: The Add New Shortcut dialog box.

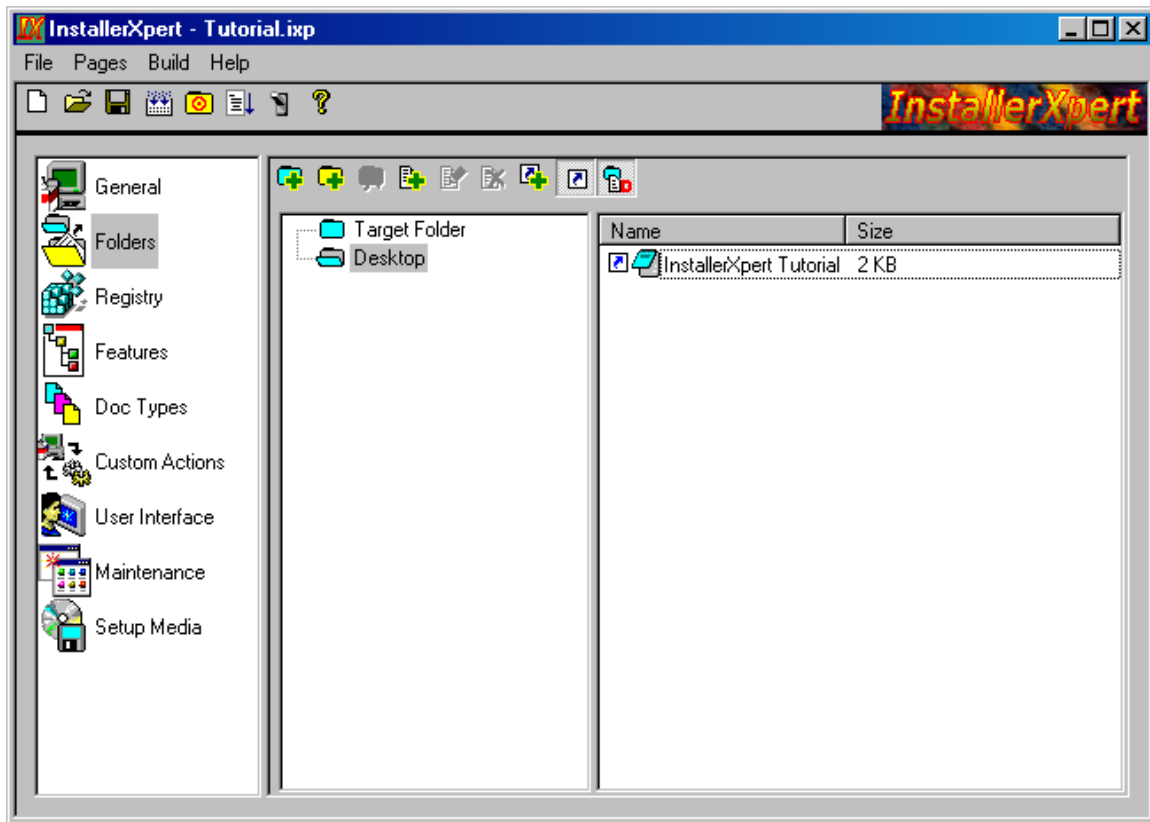


Fig. 5-4: The Folders Page after adding the files.

For this tutorial we don't add any registry settings. So, leave this page and continue to the Features Page.

Features Page Settings:

1. Select the Features Page from the Page List.
2. InstallerXpert automatically creates a feature named "Main" when you make a new project. This is the only feature that we use in this project. So, we just need to configure this feature.
3. Double click on the "Main" feature in the features Tree view in the lower left corner of the Features Page.
4. The Feature Properties dialog box appears. (Fig. 5-5)
5. In the Description field enter "The executable files of this installation".
6. Uncheck the Visible check box, and leave "Required" and "Selected" checked, and "Expanded" unchecked.
7. Click the "OK" button to return to the Features Page of InstallerXpert.

8. Right Click on the Target Folder in the file system tree view in the upper left corner of Features Page, and select the command "Add this folder with all files and subfolders to the selected feature".
9. The Features Page now should look like Fig. 5-6

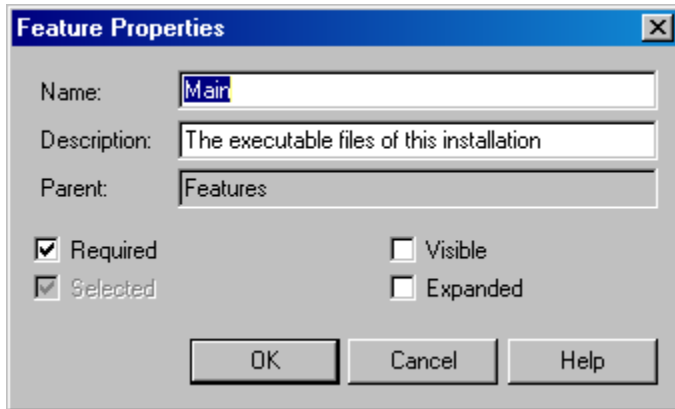


Fig. 5-5: The Feature Properties dialog box.

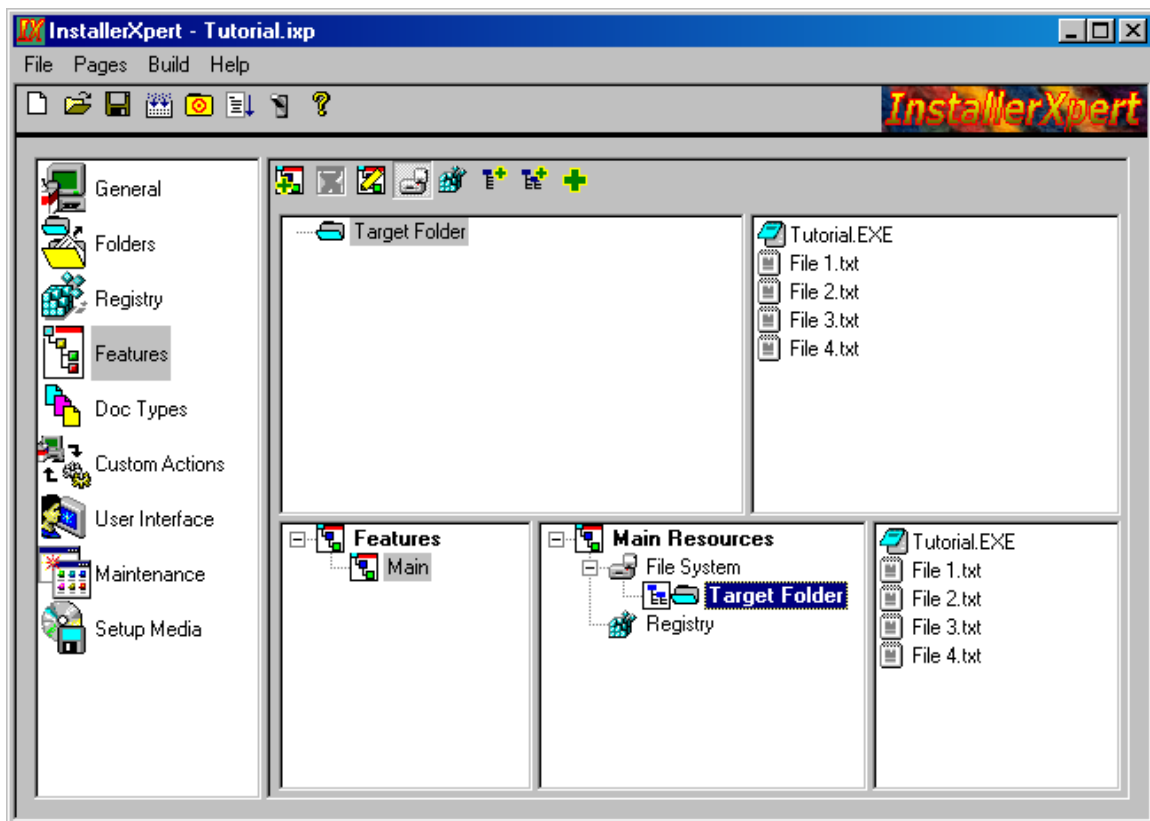


Fig. 5-6: The Features Page for the Tutorial project.

No document types and Custom Actions are defined in the Tutorial project for simplicity.

User Interface Page:

1. Select the User Interface Page from the Page List.
2. Leave the default settings for "General" and "Welcome dialog box" categories.
3. Select the "License Agreement" from the category list at left side of User Interface Page.
4. Uncheck the "Show License Agreement dialog box" check box.
5. We don't need to display the Setup Type and Features dialogs because there is only one required feature defined in this project. So, there is nothing selectable for the end-user in "Setup Type", and "Features" dialogs. Select the "Setup Type" category and uncheck the "Show Setup Type Dialog box" check box. Then select "Features" category and uncheck "Show Features Dialog box" check box.
6. We don't have a readme file in this project. Therefore, select the "Finish" category and in the field "Showing Help/Readme file", select "Do not show" from the combo box.

Maintenance Page Settings:

1. Select the Maintenance Page from the Page List. The information entered here will appear in the Support Info box accessible from the Add/Remove Programs dialog in Windows 2000 operating systems.
2. Enter your company's web site address in the "Product URL" field.
3. Enter the support phone number in the "Support Phone Number" field.
4. Click the browse button next to the "Icon File" field. Select "Tutorial.Exe" in the "Select File" dialog box, and click "OK". This is the icon that will appear in the "Add/Remove Programs" list.
5. Since we have only one feature in this project, the end-users can only remove or repair the installation after it is installed. So, check the "Disable Change" checkbox. The Maintenance Page now should look like Fig. 5-7

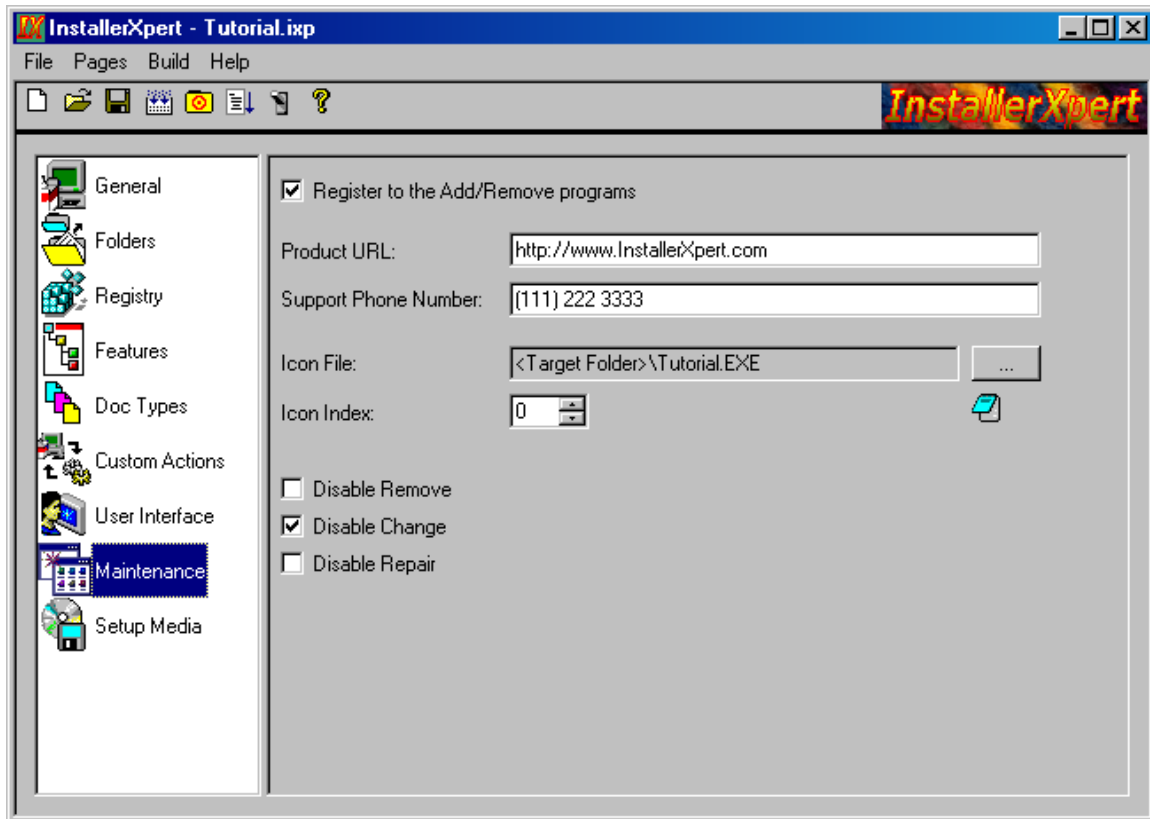
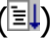



Fig. 5-7: The Maintenance Page for the Tutorial project.

Setup Media Page Settings:

1. Select the Setup Media Page from the Page List. This page allows you to build your setup and test it.
2. Click the browse button next to the "Icon File" edit box, and select the "Tutorial.exe" file in the folder:"\Samples\Tutorial\Data Files". Click the "OK". This is the icon that Windows explorer displays for your setup CD.
3. Click the browse button next to the "Destination Directory" field, and select the location you want InstallerXpert to create the setup files.
4. Click the "Build" button. InstallerXpert starts building the setup files and lists the information and errors/warnings in the list view in the lower part of Setup Media Page. This page should look like Fig. 5-8, when InstallerXpert has finished building your project.
5. Click on the Run button on the toolbar () to test your setup on your computer. If you don't want to make any changes to your computer, click the Test button () instead of Run.
6. Follow the instructions the setup wizard provides. This is exactly the same run-time experience end-users would have if you distribute this setup program to your customers.
7. Verify the installation of your files and shortcut after setup is complete. (Please note that only if you have Run the setup can you verify it. If you just tested user interface no file has been copied.)
 - i) Check the folder "C:\Program Files\IXTutorial\" and verify that the file "Tutorial.exe" and the four ".txt" files are there.
 - ii) Check to see if there is a shortcut named "InstallerXpert Tutorial" on the desktop. Double click on it to make sure it is configured correctly.
 - iii) Select Control Panel from settings under the Windows Start menu. Double click the Add/Remove Programs icon in the Control Panel. Check to see if there is an entry in the Add/Remove program dialog box for the tutorial project.
 - iv) Select the Tutorial item in the list. Note that the "Change" button is disabled. Click on the "support information" link, check your support information in the "Support Info" dialog box.
8. You can remove the "Tutorial" from your computer by clicking on the "Remove" button in the Add/Remove Programs dialog box.

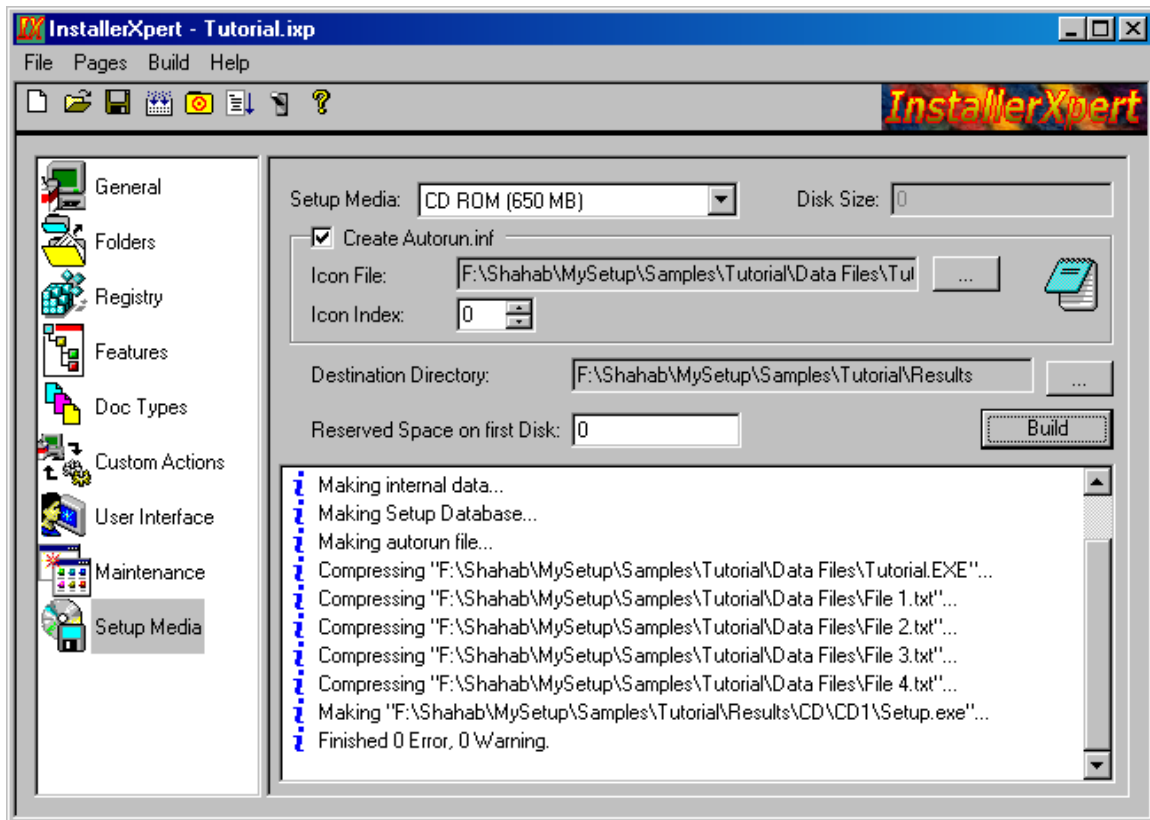


Fig. 5-8: The Setup Media Page after building the Tutorial project.

Now you can apply what you have learned in this tutorial project to your own setups.

Chapter 6: Frequently Asked Questions

This chapter deals with some of the questions that are asked most frequently. If you have a question about InstallerXpert that is not answered here, you should check the InstallerXpert Web site. Your question may already be answered there.

How Do I Specify the Target Folder for My Application?


You can define the default Target Folder for your setup in the General Page of InstallerXpert. The end-user can change this default folder only if you choose to display the "Destination Folder" dialog box in the User Interface Page of InstallerXpert. You can also specify a hard-coded location as the Target Folder of your project. (See the next question)

How do I use a hard-coded target folder in my project?

Hard-coded folders are implemented in the InstallerXpert as Special Folders. To add a hard-coded folder, right click on the left pane of Folders Page, and select "Add Special Folder" menu command. Then select "Hard Coded" from the list. Select the drive letter for your hard-coded folder in the combo box that appears below the list, and click "OK". Build sub folders under this hard-coded root folder.

If you want to hard-code the default Target Folder of your project, in the General Page, select a hard-coded root folder for "Target Location" field, and enter the sub folders in the "Sub Folder" field.

How do I get changes I make in the InstallerXpert to take effect when I run my setup?

For changes that you have made in the InstallerXpert to take effect in your setup package, you need to rebuild it. To build your setup at any time, click the Build button () in the toolbar. This creates your setup as specified by your settings for the media type you have selected.

How do I display a license agreement?

InstallerXpert can display up to three license agreement files one after another as part of setup user interface. A license agreement file is an ASCII text file or a rich text file (.rtf). To add your license agreement files to your project, do the following:

1. Select the User Interface Page from the Page List.
2. Select the "License Agreement" category from the list at the left side of User Interface Page.
3. Click the browse buttons next to the edit boxes for License files 1, 2, and 3.

Leave the unused fields empty if you have less than three license files.

How do I create shortcuts?

Shortcuts allow your end-users to have quick access to your product. To create a shortcut with InstallerXpert, do the following:

1. Select the Folders Page from the Page List.


2. Add the Special Folders where you want to place the shortcut on the target machine. Shortcuts are normally placed on desktop, Start Menu (or Programs submenu), or Quick Launch Toolbar.
3. When the location of your shortcut is created, right click on the folder and select "Add Shortcut" from the context menu.
4. In the "Select File" dialog box select the target file of the shortcut and click "OK".
5. The "Add New Shortcut" dialog box appears.
6. Enter the name and description of the shortcut, in the "Name", and "Description" fields.
7. Enter other information about your shortcut in the other fields of this dialog box.
8. Click "OK" to return to the Folders Page.

If you want to make a shortcut to a folder, click the browse button next to the "Target" edit box, and click "No Selection" in the "Select File" dialog box. Then select the Target folder of the shortcut using the browse button next to the "Start In" edit box.

If you don't specify an icon file for your shortcut, the icon of the Target File will be used instead.

How do I associate file types with my program?

If your program creates or relies on custom file types, you need to associate those file types with your program on the target machine. Document types can be defined in the Doc Types Page of InstallerXpert. To create a Doc Type, do the following:

1. Select the Doc Types Page from the Page list.
2. Click the "Add Document Type" button () on the Toolbar of Doc Type Page.
3. The "Add New Document Type" dialog box opens.
4. Enter the name of your Document Type in the "Name" field.
5. Enter a description for your document in the "Description" field. This is the text that will be displayed in the "Type" column in the Windows explorer.
6. Enter the extension of your document type. Don't include the "." or "*. " in the file extension. (".ext" and "*.ext" are invalid; "ext" is the correct form)
7. Using the browse button next to the Icon file, select the file that contains the icon, you want displayed by the Windows Explorer for your document file.

8. Click "OK" to return to the Doc Types Page.

Once you have created a document type, you can create verbs for it. A verb is a command that will appear in the context menu of Windows explorer for a document type on the target machine. "Open" and "Print" are the most popular verbs that are used with document types. To add verbs to a document type do the following:

1. Select the document type, and click on the "Add Verb" button (V+) on the toolbar of Doc Types Page.
2. The "Add New Verb" dialog box opens.
3. Enter the name of the verb in the "Name" field. This name will exactly appear in the context menu of Windows explorer when your end-users right click on a file of the type you are defining. You can use the "&" character to make a shortcut key and underline it in the context menu. For example enter "&Open" to have "Open" in the context menu.
4. Enter a description for the verb in the "Description" field.
5. Select the target file for this verb by clicking on the browse button next to the "Target" edit box.
6. Enter the command line arguments you want to pass to the executable file. Use "%1" (including the quotation marks) to pass the name of file to the target executable. Use /p "%1" for a print command. Refer to the command line switches of the target file to make more verbs.
7. Click "OK" to close the dialog box and return to the Doc Types Page.

How do I launch an external application from my setup?

With the use of Custom Actions, you can launch executable files, call functions from DLLs, or open a known document type (like bitmap files, text files, or html files). Custom Actions can be added in the Custom Actions Page

How do I conditionally install my setup based on the operating system of the target machine?

If you want your setup to run only on certain operating systems - Windows 2000, Service pack 1, for example - you can set this in the General Page of InstallerXpert. If the operating system on the target system is not Windows 2000 with service pack 1, or a newer OS, your application cannot be installed.


How do I create a self-extracting EXE for my installation?


To create a self-extracting .exe file for your installation, do the following:

1. Select the Setup Media Page from the Page List.
2. In the "Setup Media" combo box, select "Single Executable file".
3. Click the "Build" button to create the self-extracting exe file.

How can I create my setup so it installs files based on the target operating system?

You can assign target operating systems to a file in the file properties dialog box. Do the following to assign target operating systems to a file:

1. Select the Folders Page from the Page list.
2. Select the file you want to assign target operating systems.
3. Click the File Properties button () on the toolbar of Folders Page.
4. The File Properties dialog box appears.
5. Uncheck the box "All Operating Systems".
6. Check the operating systems on which you want the file installed in the list below the check box.
7. Click "OK" to return to the Folders Page.

Note that the icon () appears next to the files with assigned target operating systems.

When running on the target machine, Setup installs the file only if the target machine's operating system is one of the OS's selected for the file.

You can have two or more files with the same name in a folder, as long as they have different target operating systems. When you add, copy, or move a file to a folder, InstallerXpert checks to see if there is a file with the same name in the folder. If it finds a file with the same name, it then checks the target operating systems for of the existing file. If it has all OS's as the target operating system, the new file cannot be added to the folder. Otherwise, InstallerXpert adds the new file and sets the unused target operating systems for the new file.

Chapter 7: Glossary

App Paths

The registry key that Windows uses to find your application and its DLLs, if their locations are not already in the system's path. In InstallerXpert App Paths can be set in the File Properties dialog box.

Context Menu

A context menu, also known as a right-click menu or a popup menu, appears when a user right-clicks an item on the desktop, in Windows Explorer, or in an application.

Custom Action

DLLs, EXEs, or any other type of file associated with an application on the target machine that you launch to perform additional tasks during your setup, such as playing media files or displaying custom dialogs.

Dynamic File Linking

Ability to dynamically link to a folder in InstallerXpert. With Dynamic File Linking, all or selected files in the folder are added to your setup based on wildcard characters when it is built.

Dynamic Link Library (DLL)

A shared code-base file containing functions that can be called from other applications.

End User

The term end-user, in InstallerXpert documentation, refers to the customer who installs your product onto his or her computer.

Feature

Parts of a setup from an end-user's perspective, such as a help file, a clip art package, or program files. These are logical groupings of files and functionality that the end-user can install individually during a custom setup.

Globally Unique Identifier (GUID) and Product GUID

A globally unique identifier is a long string of numbers created by InstallerXpert to uniquely identify your product from others.

.ixp File

The .ixp file is the working file that InstallerXpert uses to store your project information. When you build a release, InstallerXpert uses the .ixp file to create your setup files for distribution.

Page List

The list view at the left side of InstallerXpert main window that lists all pages available in InstallerXpert. It is used as a navigational tool.

Product

Refers to the actual application or collection of files that is to be installed.

Product ID

An 18-character alphanumeric string that uniquely identifies your copy of InstallerXpert software. To get your validation code, you need to provide your Product ID.

Run Time

The time during which the setup program interacts with the user to install your application on the target machine.

Uninstallation

The process where the setup undoes the changes made during the installation. Uninstallation is the installation maintenance option that allows the end-user to remove the product files and reverse any changes to the machine made during the original installation.

Validation Code

A 20-character alphanumeric string that you need to enter in InstallerXpert to be able to use it after the trial period. To get your validation code, you need to provide your Product ID.