

# **CE Database™ Help**

**Parameter**

**Installation**

**Preface**

**Start**

**Folder**

**File**

**Detect Hyperlink**

**Zoom**

**Search**

**Invisible Mode**

**Shortcut Key**

**Security**

**Quality**

**Purchase**

**FAQ**

**Terms of Use**

**Contact Us**

**Epilogue**

## Word Explanation

**CE:** Casual Engine

**Microsoft .NET Framework:** It is the platform for new kind of software to run on. It is the heart of Windows operating system.

## Parameter

**Fee:** 80.00 US dollar. Enterprises, governments and commercial organizations have to pay 80 US dollars for each computer. Individuals can use it for private use without amount limitation after purchase. This fee includes all the future update, upgrade and long-term technical support.

**Version:** 2.0

**Operating System:** It does not support Linux. It supports:

Windows 7/Vista/XP/2000/98. Vitally, it supports Windows Server 2008/2003/2000 and their R2 editions.

**CPU:** 400MHz. You can definitely run this software if your computer can start.

**RAM:** 12MB.

**Hard Disk:** 24KB. You do not have to worry about the hard disk at all.

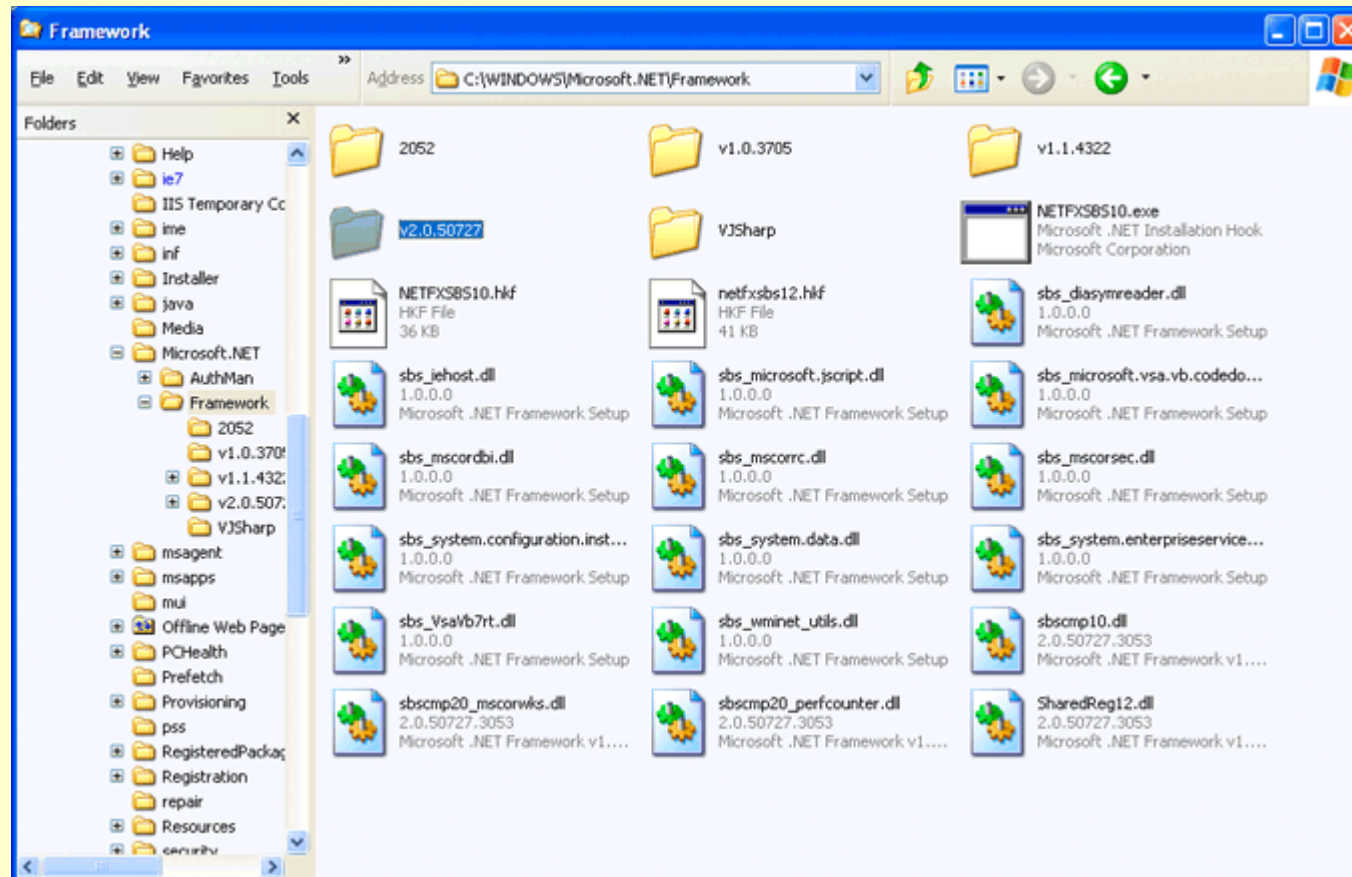
## About Second Version

To provide convenience, the second version adds the save button inside.

Besides, the price is reduced.

# Installation

Notice that this software requires *Microsoft .NET Framework 2.0* and SP2. You have to install them first.



To see whether your computer has already installed this platform. You can check your computer.

**C:\WINDOWS\Microsoft.NET\Framework**

You can see the folder: **v2.0.50727**. If you cannot find it, you have to go to Microsoft Download Center to download and install them.

Click Here to Install Silverlight United States Change All Microsoft Sites

Microsoft Submit

Download Center

Download Center Home Search All Downloads Go Advanced Search

**Product Families**

- Windows
- Office
- Servers
- Business Solutions
- Developer Tools
- Windows Live
- MSN
- Games & Xbox
- Windows Mobile
- All Downloads

**Download Categories**

- Games
- DirectX
- Internet
- Windows Security & Updates
- Windows Media
- Drivers
- Home & Office
- Mobile Devices
- Mac & Other Platforms
- System Tools
- Development Resources

**Download Resources**

- Microsoft Update Services
- Download Center FAQ
- Related Sites

**Download Notifications**

- Notifications Signup

**Worldwide Downloads**

- Countries & Regions

## Microsoft .NET Framework Version 2.0 Redistributable Package (x86)

**Brief Description**

The Microsoft .NET Framework version 2.0 (x86) redistributable package installs the .NET Framework runtime and associated files required to run applications developed to target the .NET Framework v2.0.

**On This Page**

- [Quick Details](#)
- [System Requirements](#)
- [Additional Information](#)
- [What Others Are Downloading](#)
- [Overview](#)
- [Instructions](#)
- [Related Resources](#)
- [Related Downloads](#)

**Download**

**Quick Details**

File Name:	dotnetfx.exe
Version:	2.0
Date Published:	1/22/2006
Language:	English
Download Size:	22.4 MB
Estimated Download Time:	Download (56K) 55 min
Change Language:	English Change

**Overview**

The Microsoft .NET Framework version 2.0 redistributable package installs the .NET Framework runtime and associated files required to run applications developed to target the .NET Framework v2.0.

The .NET Framework version 2.0 improves scalability and performance of applications with improved caching, application deployment and updating with ClickOnce, support for the broadest array of browsers and devices with ASP.NET 2.0 controls and services. For more information on the .NET Framework 2.0, click [here](#).

[↑ Top of page](#)

Please download *Microsoft .NET Framework Version 2.0 Redistributable Package*. This image shows its 32 bit edition. You should download its 64 bit edition if your computer is 64 bit. This is the platform for new kind of software to run on. The URL is:

**<http://www.microsoft.com/downloads/details.aspx?FamilyID=0856eacb-4362-4b0d-8edd-aab15c5e04f5&DisplayLang=en>**

Click Here to Install Silverlight United States Change All Microsoft Sites

Microsoft Submit

## Download Center

Download Center Home Search All Downloads Go Advanced Search

**Product Families**

- Windows
- Office
- Servers
- Business Solutions
- Developer Tools
- Windows Live
- MSN
- Games & Xbox
- Windows Mobile
- All Downloads

**Download Categories**

- Games
- DirectX
- Internet
- Windows Security & Updates
- Windows Media
- Drivers
- Home & Office
- Mobile Devices
- Mac & Other Platforms
- System Tools
- Development Resources

**Download Resources**

- Microsoft Update Services
- Download Center FAQ
- Related Sites

**Download Notifications**

- Notifications Signup

**Worldwide Downloads**

- Countries & Regions

### Microsoft .NET Framework 2.0 Service Pack 2

**Brief Description**  
Service Pack 2 for .NET Framework 2.0

**On This Page**

- [Quick Details](#)
- [System Requirements](#)
- [Related Resources](#)
- [Overview](#)
- [Instructions](#)
- [What Others Are Downloading](#)

[Download files below](#)

**Quick Details**

Version:	SP2
Date Published:	1/16/2009
Language:	English
Download Size:	23.8 MB - 122.3 MB*

\*Download size depends on selected download components.

**Change Language:**  [Change](#)

**Overview**

The .NET Framework 2.0 Service Pack 2 provides cumulative roll-up updates for customer reported issues found after the release of the .NET Framework 2.0. In addition, this release provides performance improvements, and prerequisite feature support for the .NET Framework 3.5 Service Pack 1.

Please review the supported operating systems for this deployment package in the System Requirements section. The corresponding updates for Windows Vista and Microsoft Windows 2008 are deployed via the full .NET Framework 3.5 service pack 1.

[Top of page](#)

**System Requirements**

- Supported Operating Systems:** Windows Server 2003; Windows XP
- Processor:** 400 MHz Pentium processor or equivalent (Minimum); 1GHz Pentium processor or equivalent (Recommended)
- RAM:** 96 MB (Minimum); 256 MB (Recommended)

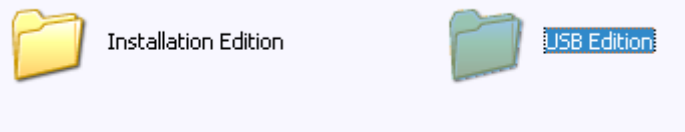


Then, you have to download its SP2: *Microsoft .NET Framework 2.0 Service Pack 2*. The URL is:  
<http://www.microsoft.com/downloads/details.aspx?FamilyID=5b2c0358-915b-4eb5-9b1d-10e506da9d0f&DisplayLang=en>

**Tip:** *Microsoft .NET Framework 2.0* and SP2 are extremely important for new kind of software. CE



strongly recommends you to save them in your flash drive and portable hard disk. You do not have to access the Internet and download them repeatedly, if you use other computers. Many computers have not yet installed them by default.



After installation of the *Microsoft .NET Framework 2.0 SP2* platform, you can unpack the .zip file and open the folder. It has two editions: *USB* and *Installation*.

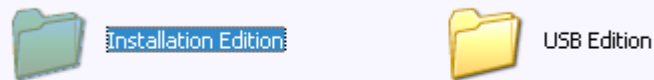
The USB edition does not require installation at all. You can simply double-click **CE Database.exe** to run this software. It does not write data into Windows Registry or hard disk at all. It just runs on the memory temporarily. Besides, after closing the software, it will be totally removed from your computer.



It supports 32 and 64 bit systems at the same time.

It does not contain icons. Therefore, it uses the default icon of *Windows* operating system. Indeed, it looks ugly. You should complain about Microsoft Corporation. Note that it is not virus. You should not mistake it later. You should save it in your flash drive or portable hard disk.

The USB edition is quite useful if you use other people's computers. It is impolite to install software in computers of your friends. Similarly, you may not be allowed to install any software in office or other public computers, because these computers have been locked. You can still use this software if you use the USB edition. Definitely, to use this software, you have to persuade the owners to install the *Microsoft .NET Framework 2.0 SP2* platform first.



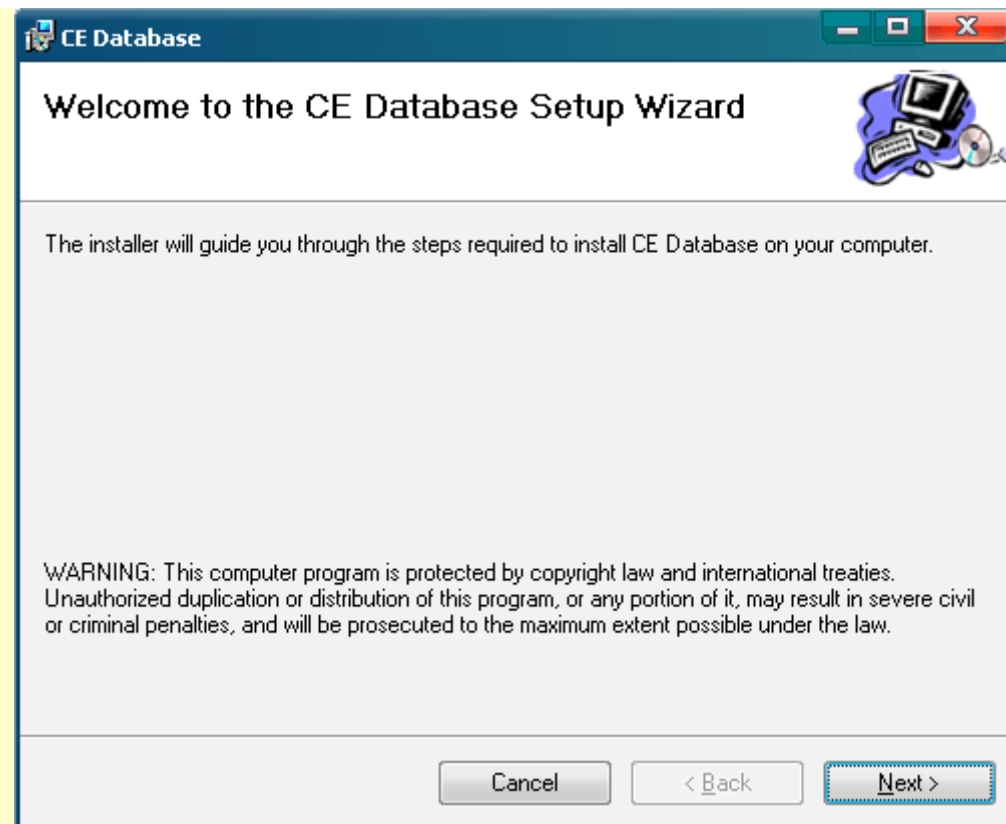
Definitely, you can install the software directly, if you are using your own computer.



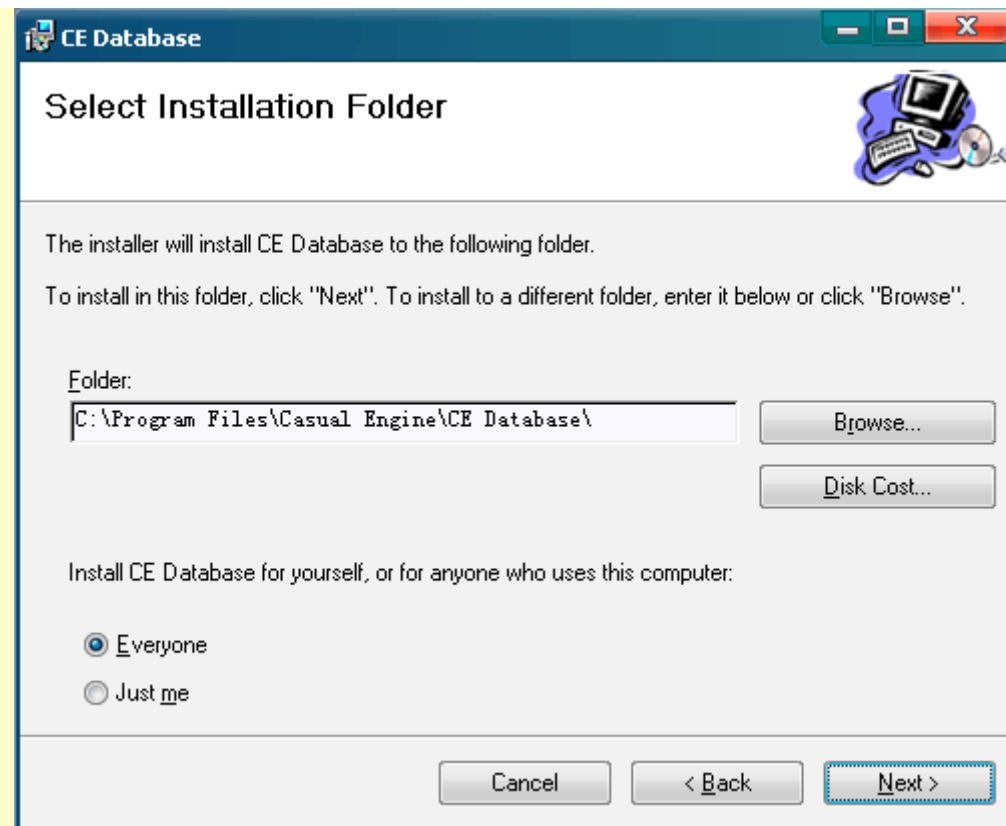
Then, you have to choose the system first. x86 means 32 bit while x64 means 64 bit.



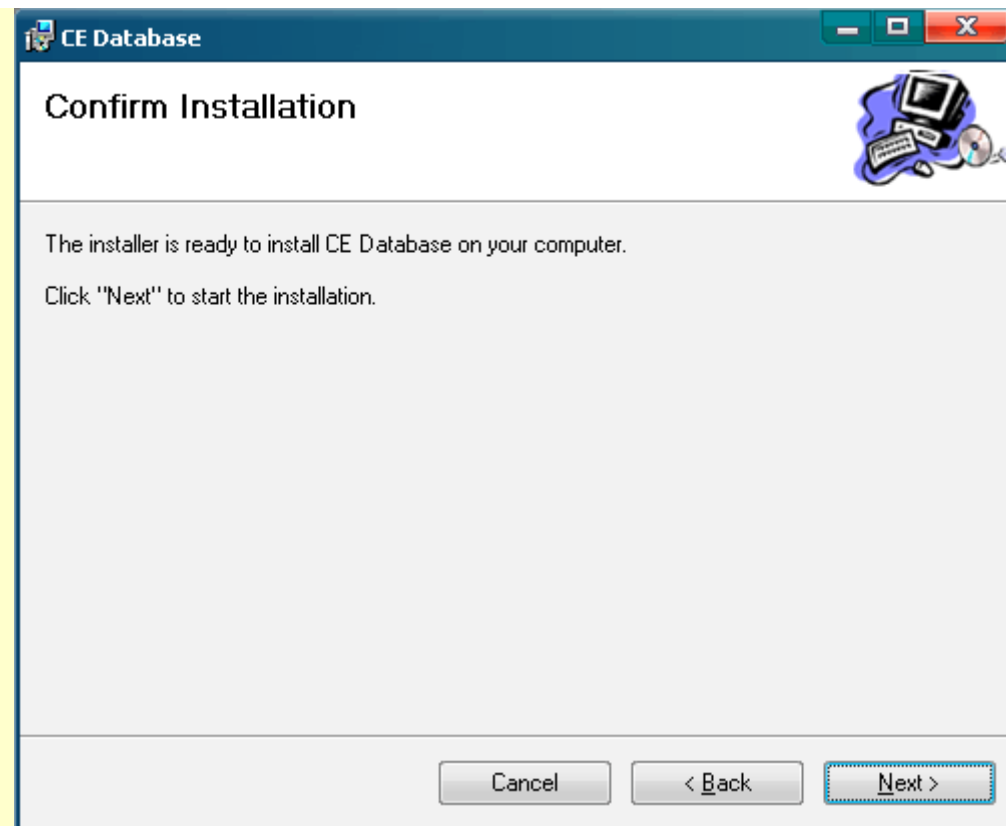
For example, you can double-click **Setup86.msi** to install it if your computer is 32 bit.



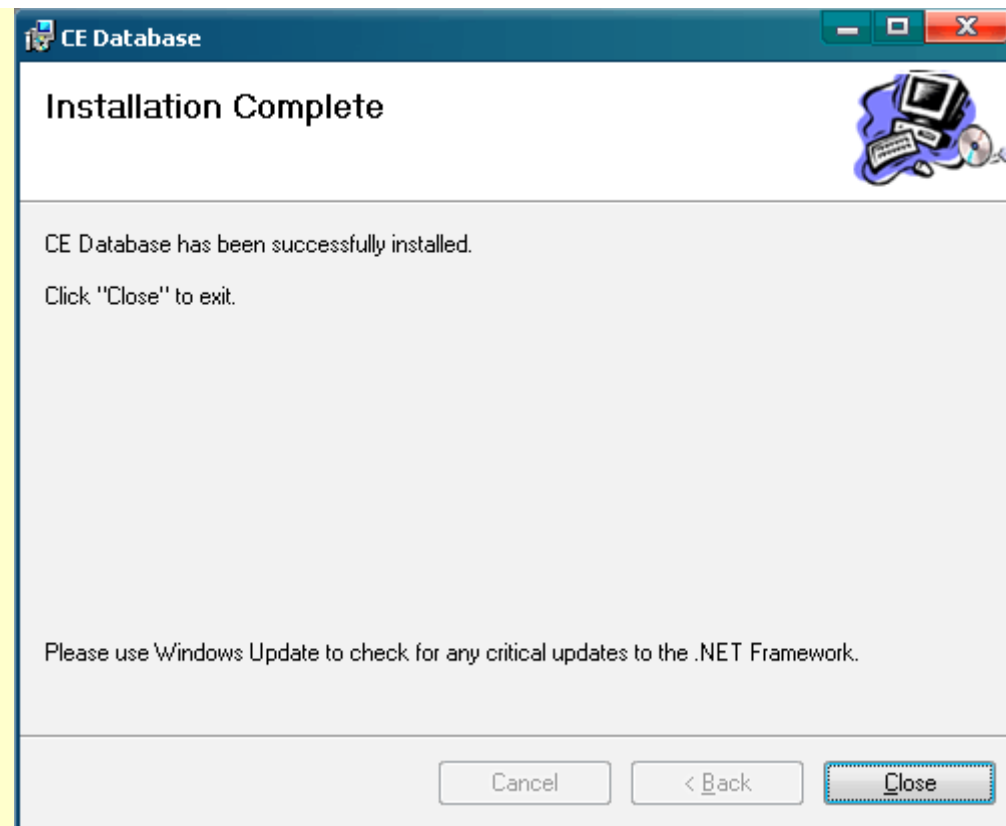
This is the wizard of installation. Click "Next" button.



Usually, you do not have to change the folder. Besides, everyone can use it by default. Click "Next" button again.



Finally, you can click "Next" button to start installation.



After installation, you can close this wizard. It has been installed in your computer successfully. You can start the software on [Start] menu.





# Preface

As an enterprise, you may need to create many files and data every day. They are not suitable to store in database software, such as *Oracle*, *SQL Server*, and so forth. Database software is only suitable for well-regulated data. Therefore, they can only use tables. Besides, they provide search and update functions, if the tables are designed well.

However, other data are not suitable to store in database software. They have no relations, and you do not have enough time to enter the data inside. For example, you will not waste time to store all the contents of .doc and .docx files into *Microsoft Access*. It is useless and stupid. Sarcastically, you have to export the data from database software regularly for the purpose of backup. Database software is still software. They are quite unreliable to store data.

Definitely, you lack a tool to manage your files and data. You have to create many folders and files, and give them various names. Finally, you can forget the positions of your files or data. Later, you have to search them one by one.

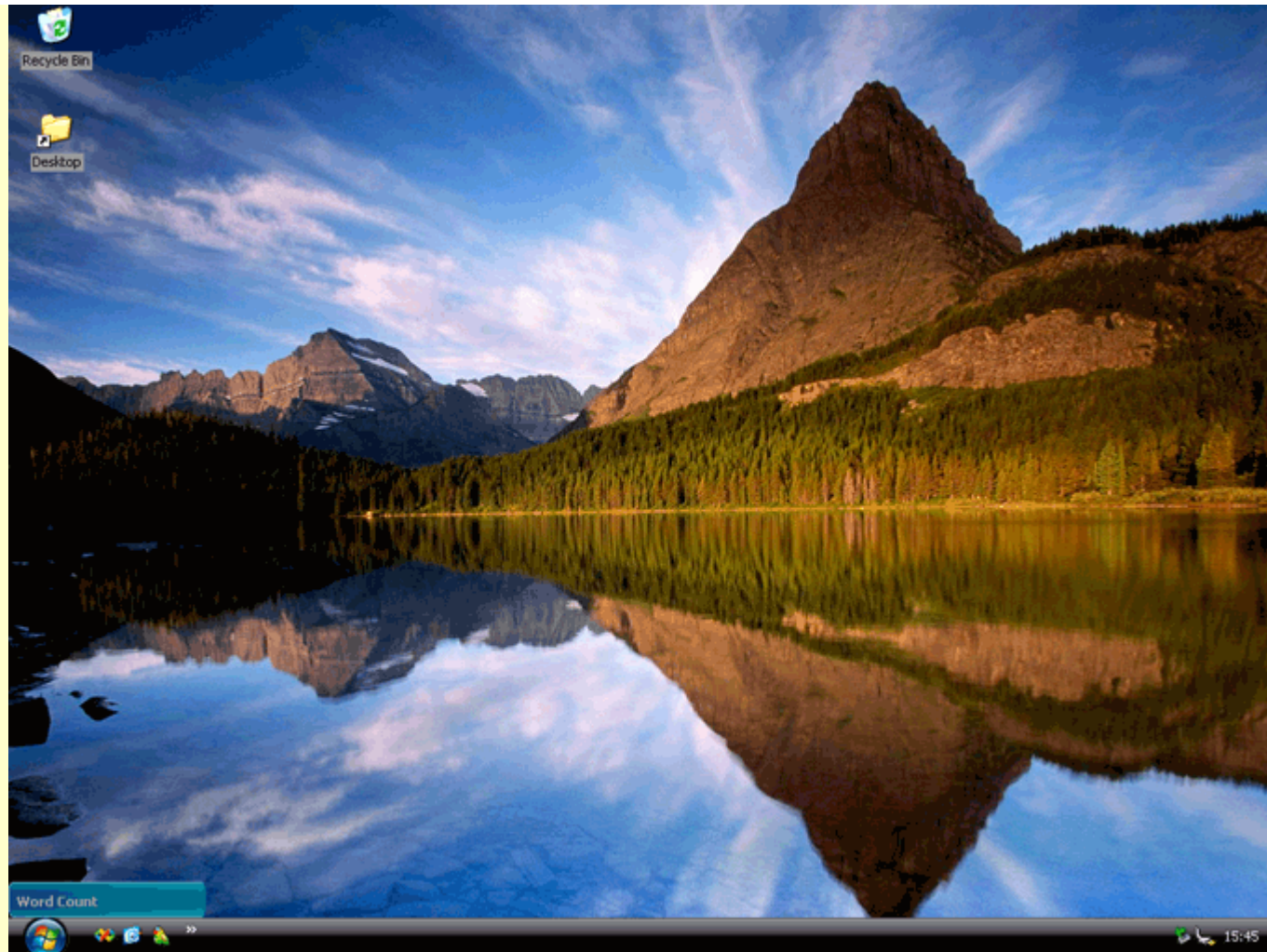
CE Database™ comes to help you manage files and data. It creates folders for you according to the date. As a result, you can put the files and data inside, and manage them well.



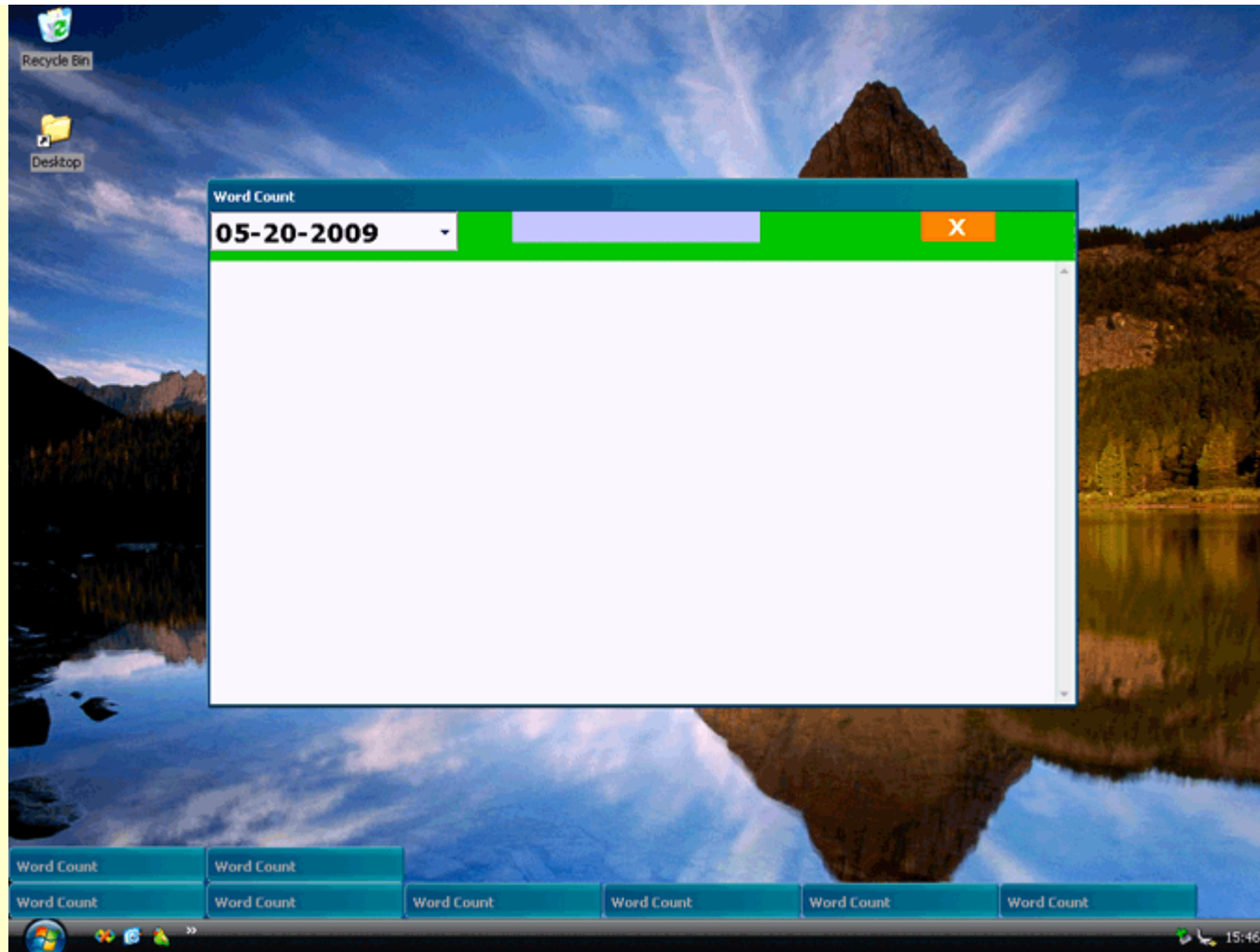
# Start



This is the interface of the software.

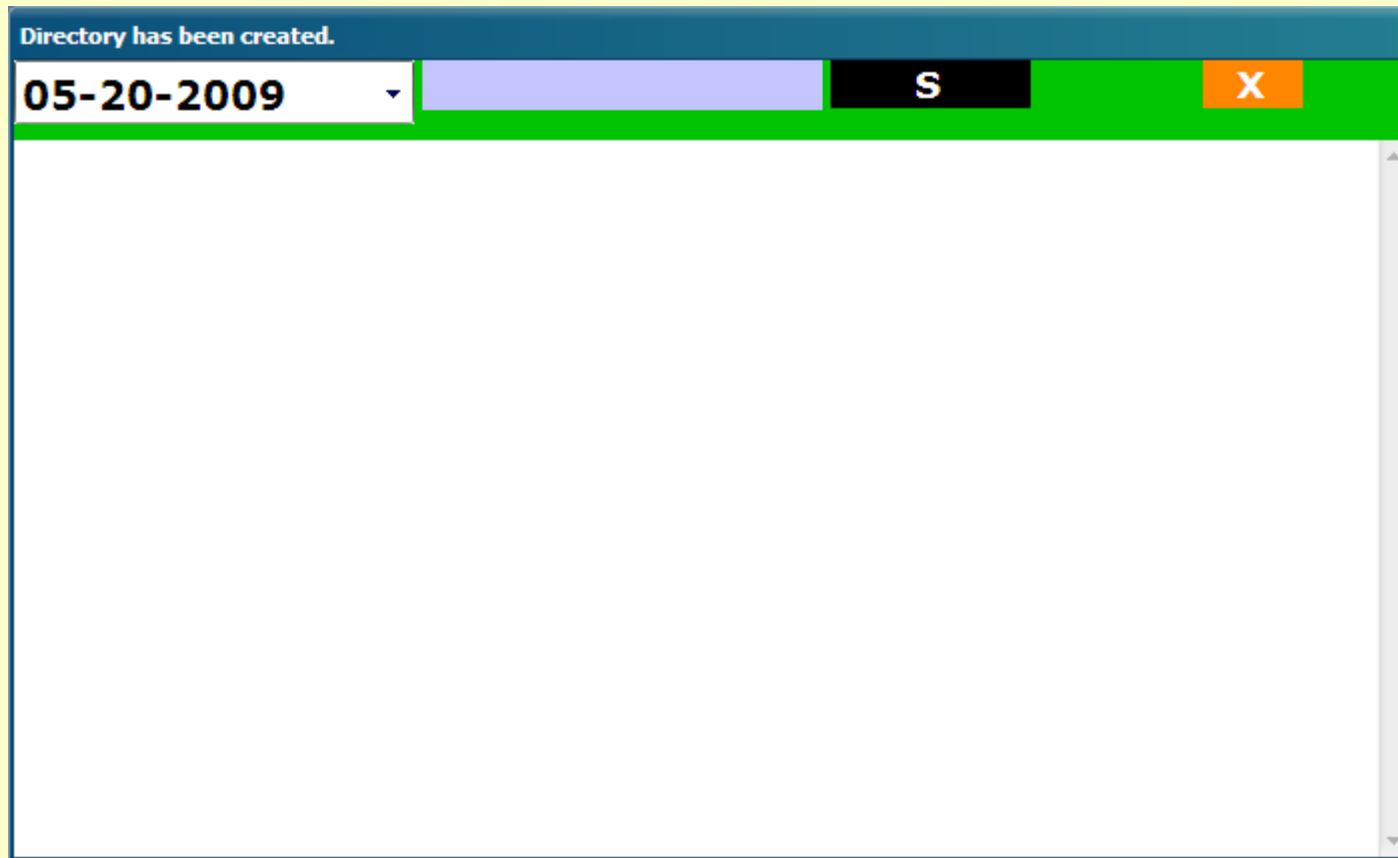


You can minimize the window by double-clicking the green area or pressing **<Ctrl+M>** key.



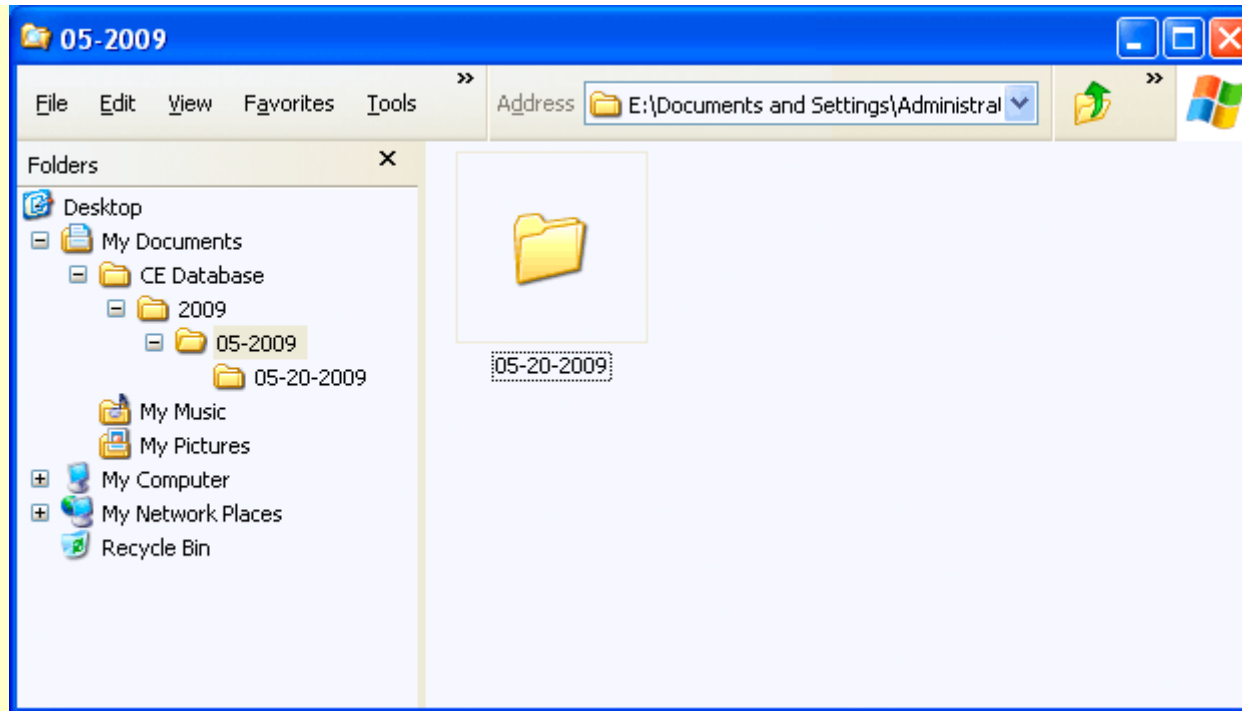
Note that this software supports multiple windows. You can create many folders and RTF files at the same time. It is convenient to save much data from the Internet.

# Folder



The title bar will give you tips, after creating the folder.

CE Database™ is quite simple. You can choose the date. Then, press **<Ctrl+S>** key or click "S" button to create the folder.



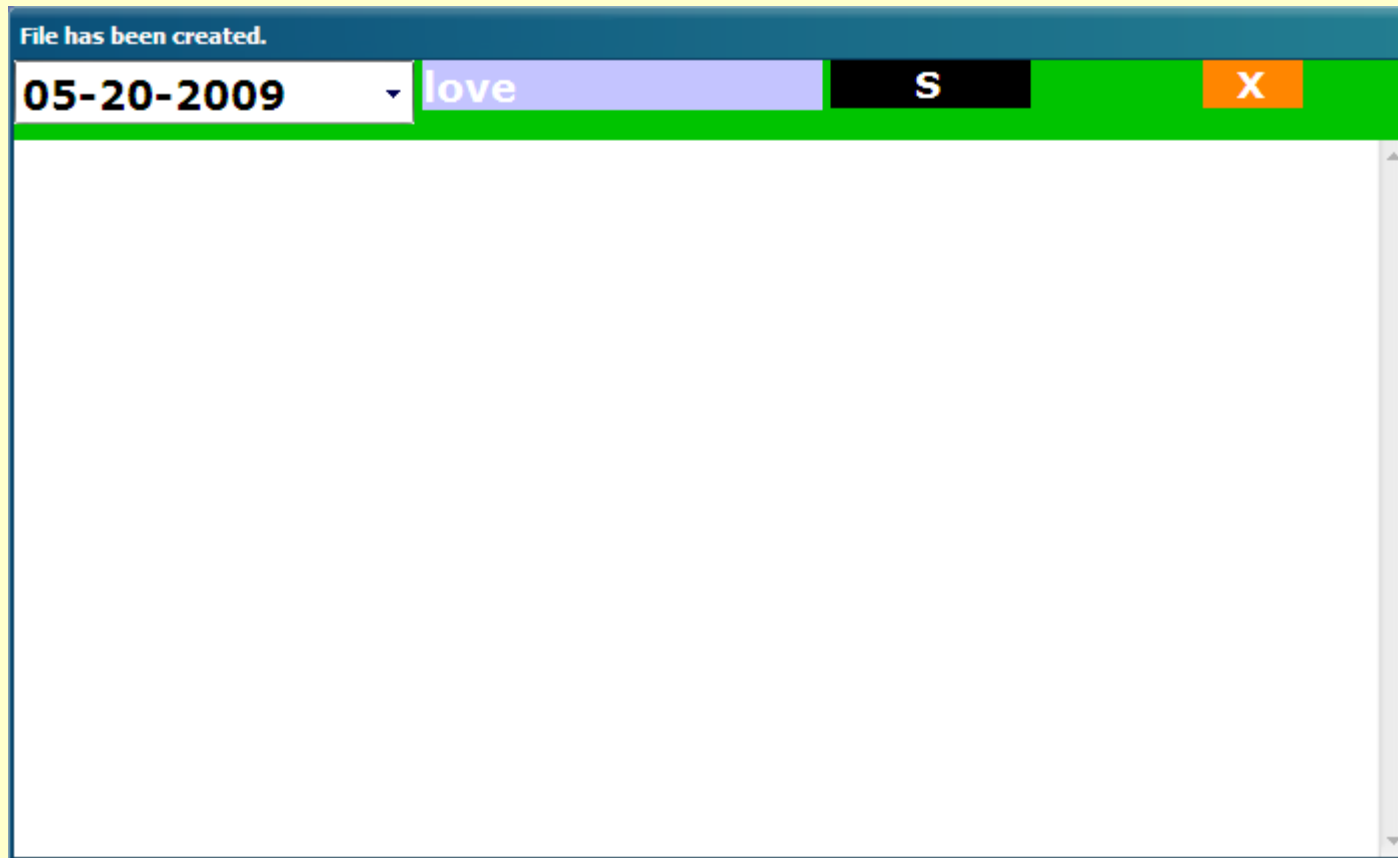
The location of the folder will be:

**My Documents\CE Database\Year\Month-Year\Month-Day-Year\**

After creation of the folder, you can put your files inside this folder. As a result, you can classify all of your files easily, if you create many files every day.



# File

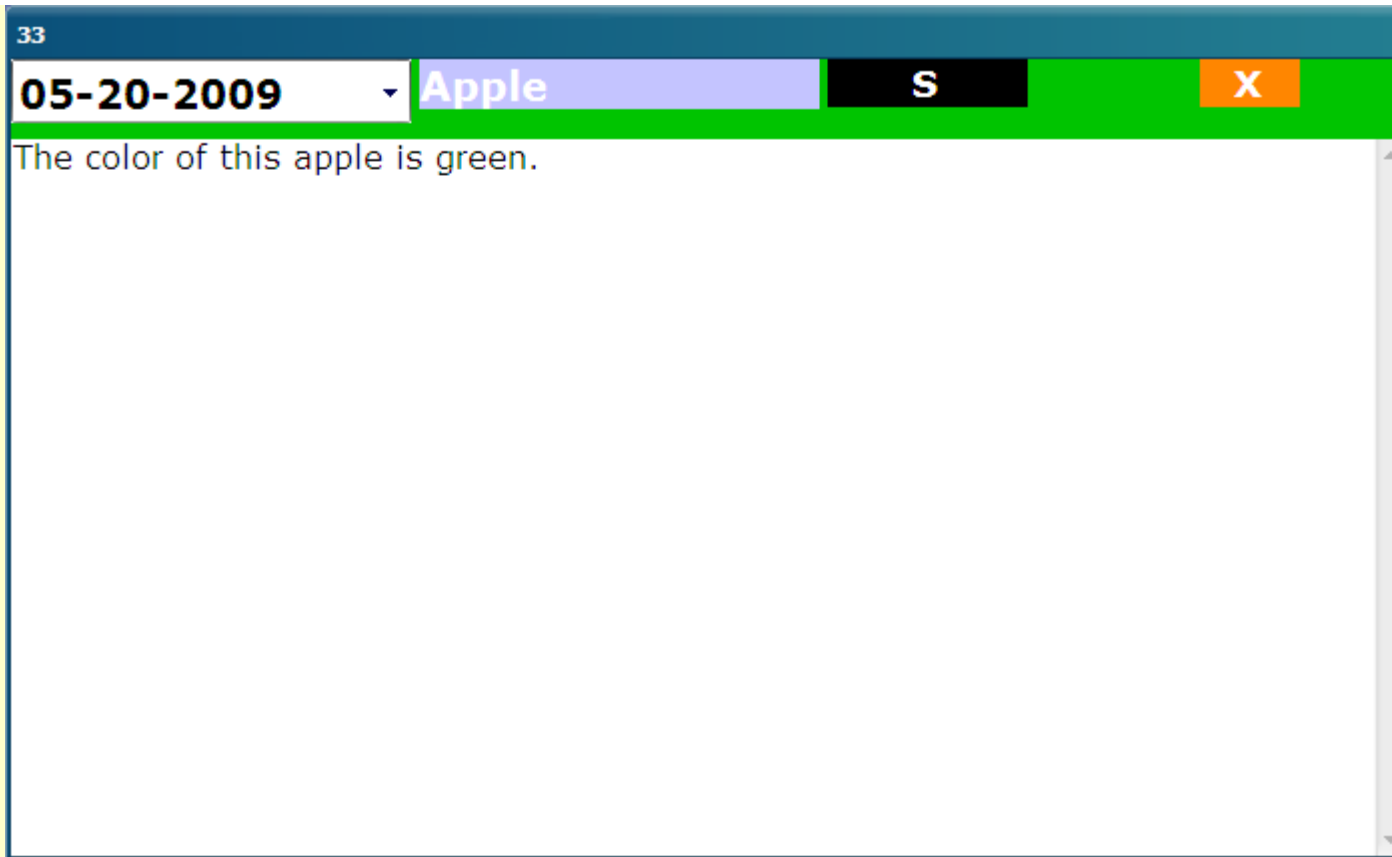


You can also create a file inside the folder directly. The default file format is RTF. RTF is quite excellent. It supports most formats of *Microsoft Word* and *OpenOffice*. Besides, it supports tables and images. It means that you can copy contents from *Microsoft Word* or *OpenOffice* directly. It can remain most of the formats.

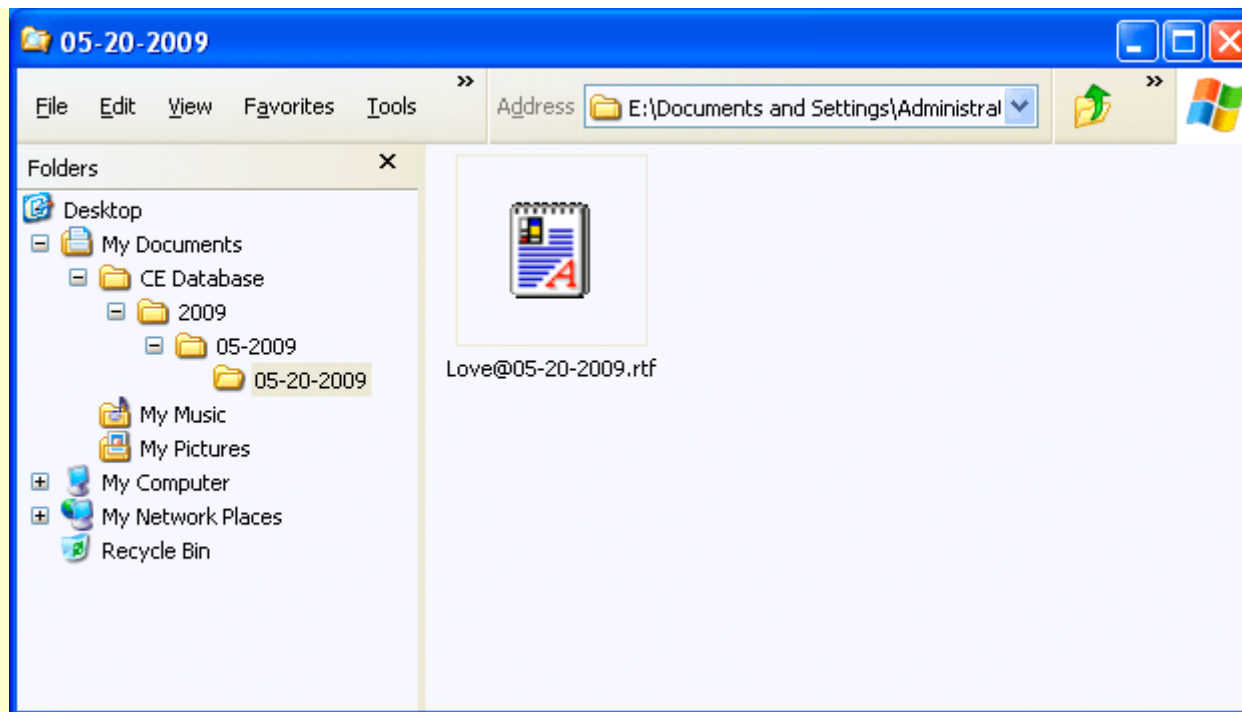
You just need to write down the file name in the upper **blue** text box. Then, press **<Ctrl+S>** key or click "S" button. It will create the file automatically. Besides, it will put the file in the specified folder, according to the date you choose.

**Note:** Filename cannot contain <>?/|\":

This function is quite useful. You can copy much data from the Internet or Intranet, and store it in your computer with efficiency.

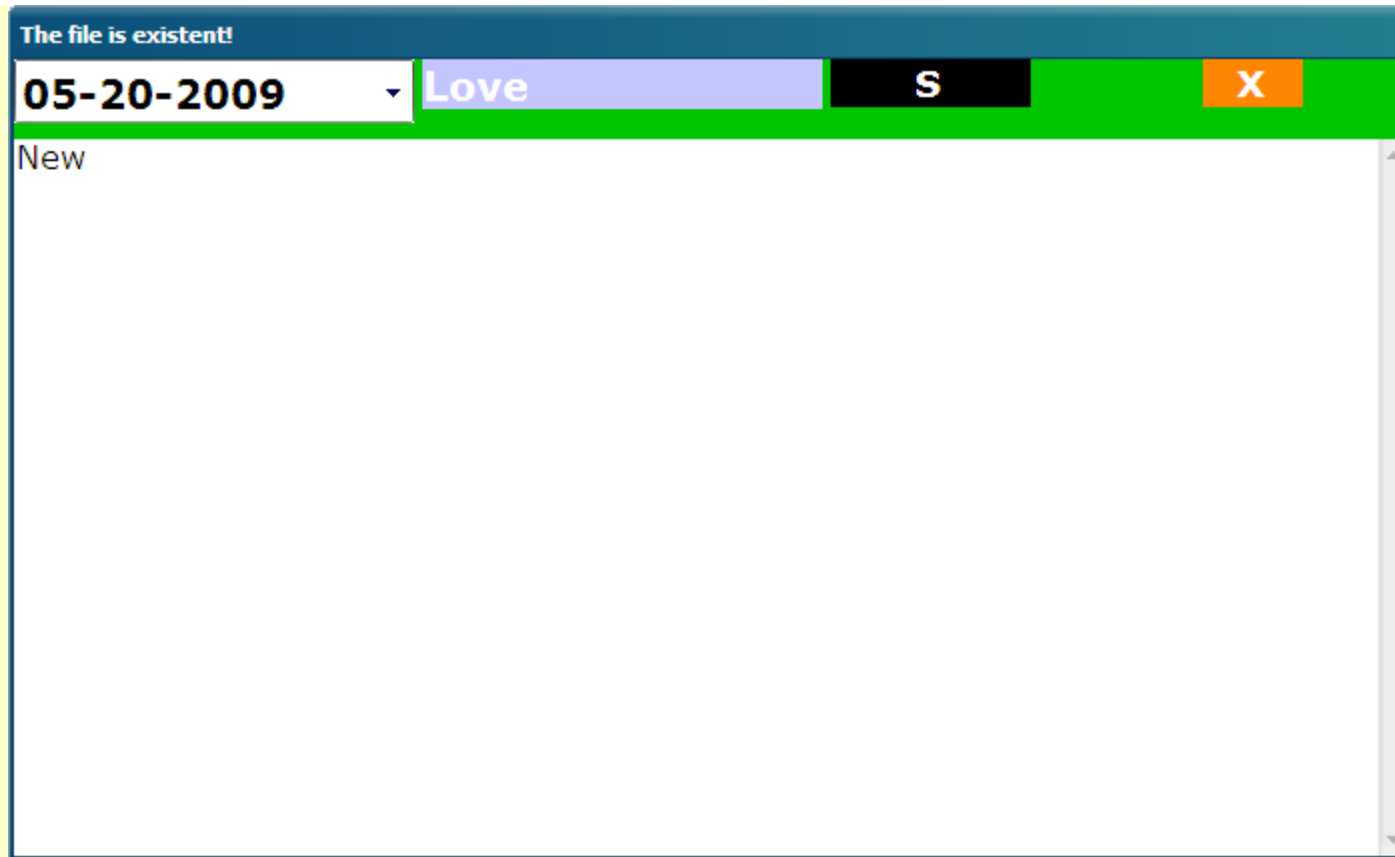


**Tip:** The title bar shows the amount of characters, after clicking the content box or pressing **<Ctrl+W>** key.



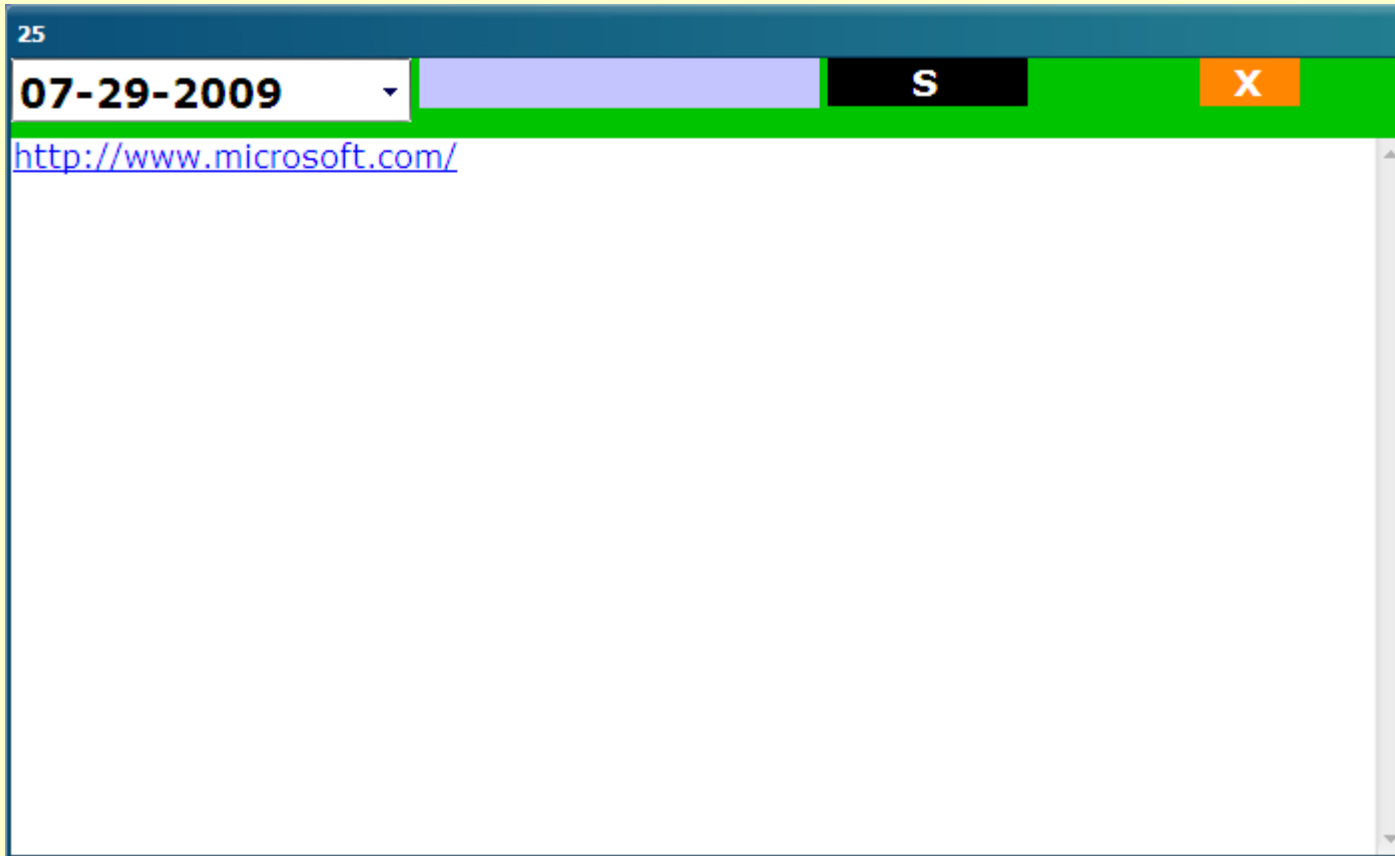
The location of the file will be:

**My Documents\CE Database\Year\Month-Year\Month-Day-Year\File  
Name@Month-Day-Year.rtf**



It contains a protection mechanism. If the file has already existed, you cannot save the content. It prevents you covering the previous data.

## Detect Hyperlink

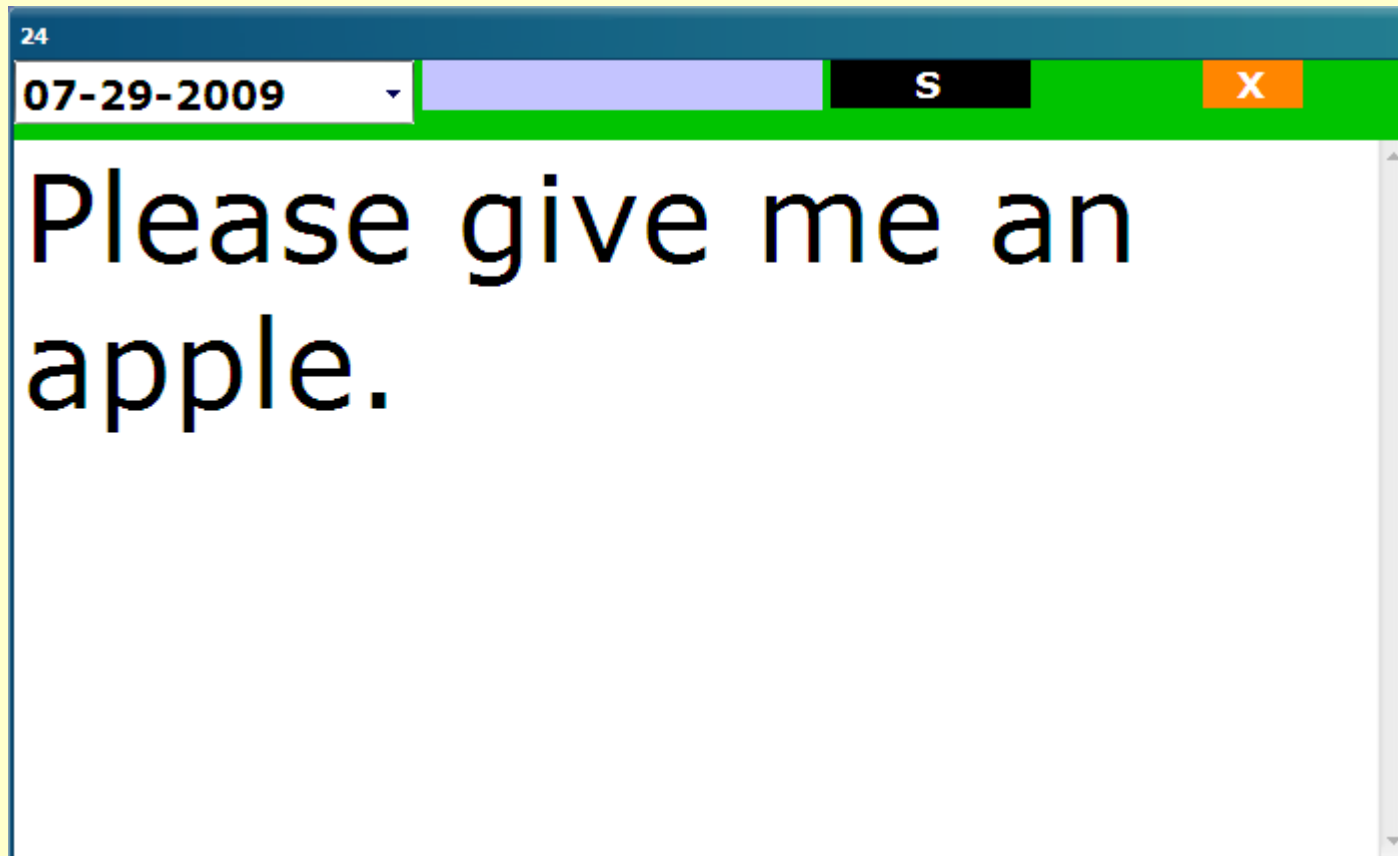


CE Database™ detects hyperlinks automatically. As a result, you can see them clearly.

**Note:** To enhance the security, you cannot click hyperlinks to open Web pages.



## Zoom

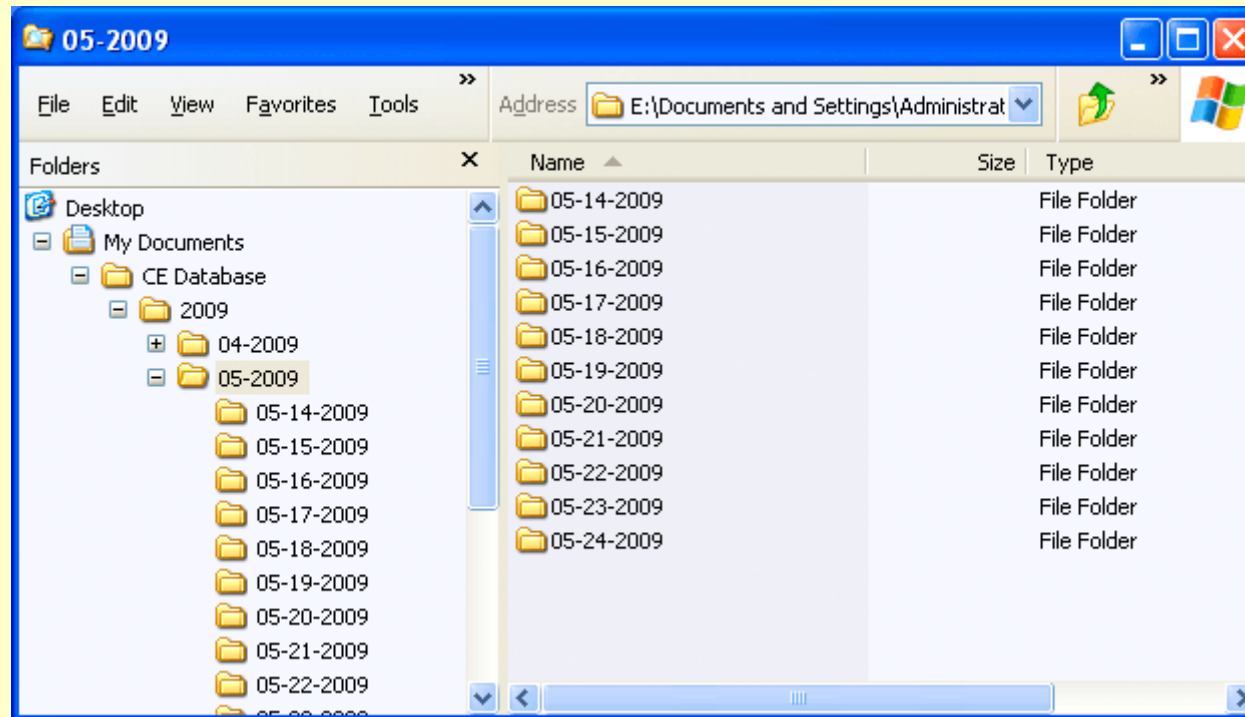


Sometimes, the words are too small. In this case, you can press **<Ctrl+Mouse wheel>** to zoom the contents.



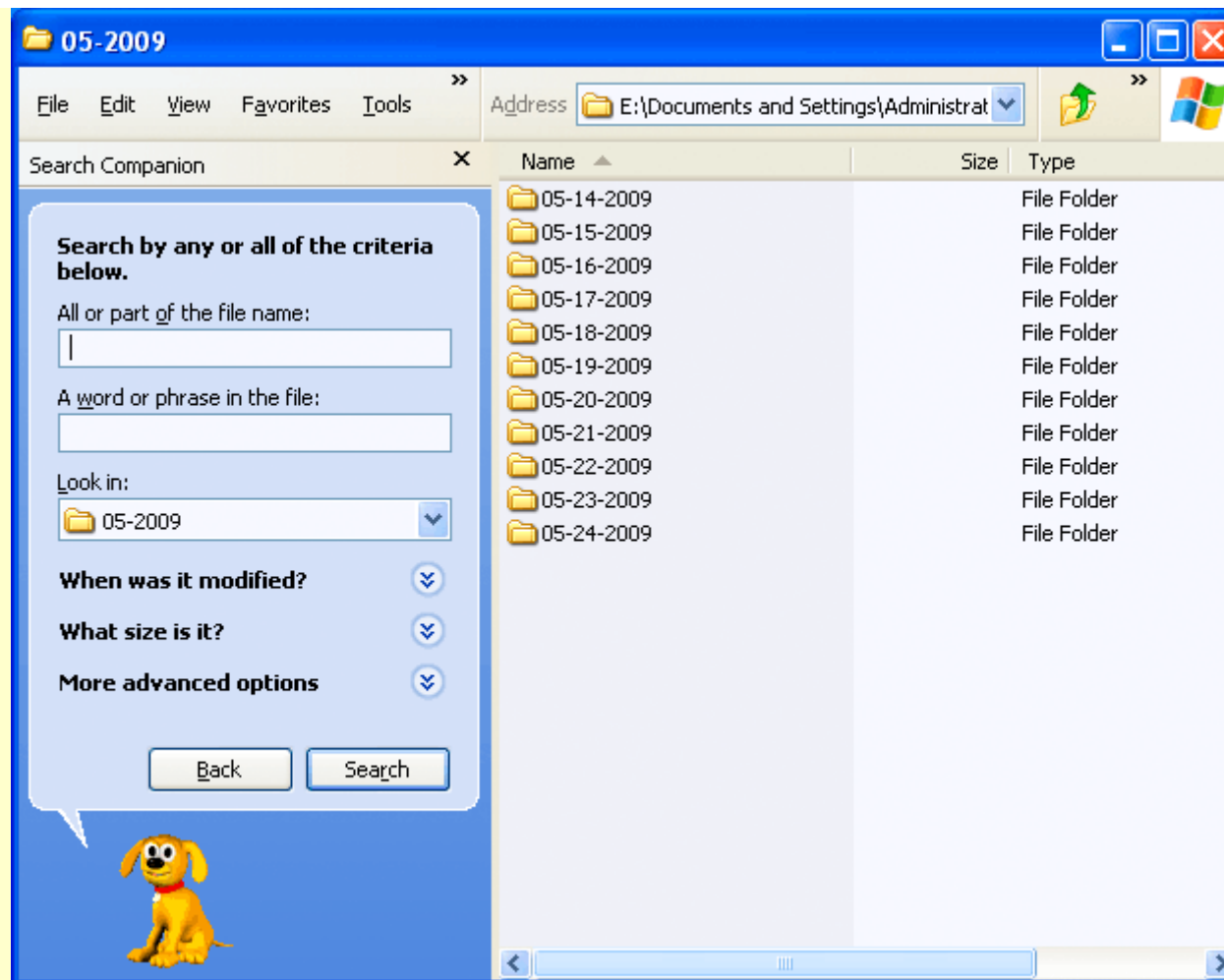


# Search



Windows operating system has already provided the search function. Therefore, CE does not add this function in the software repeatedly.

To find your files, you do not have to search the whole computer every time. Instead, you can press **<Win+E>** key to open the *Windows Explorer*. Then, click the specified folder on the left window.

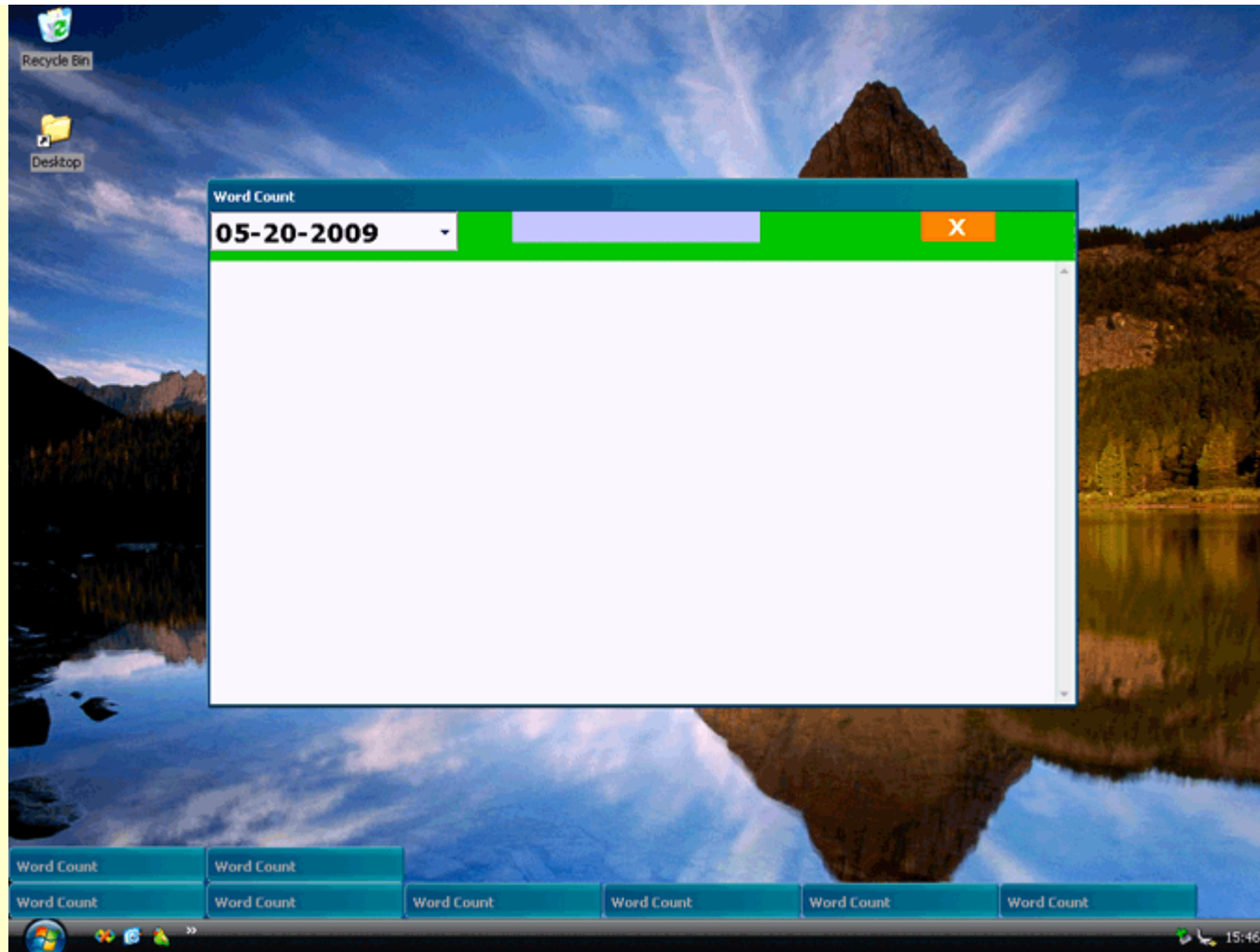


Finally, press **<Ctrl+F>** key and enter the file name to search the files in the specified folder.

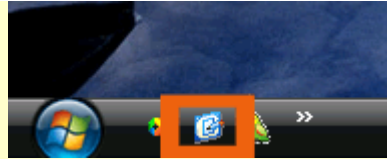


## **Invisible Mode**

Sometimes, you need to leave your computer for a while. You may have to get reports, drink coffee, or go to toilet temporally. Definitely, you do not want others to see your contents, because they may be sensitive.

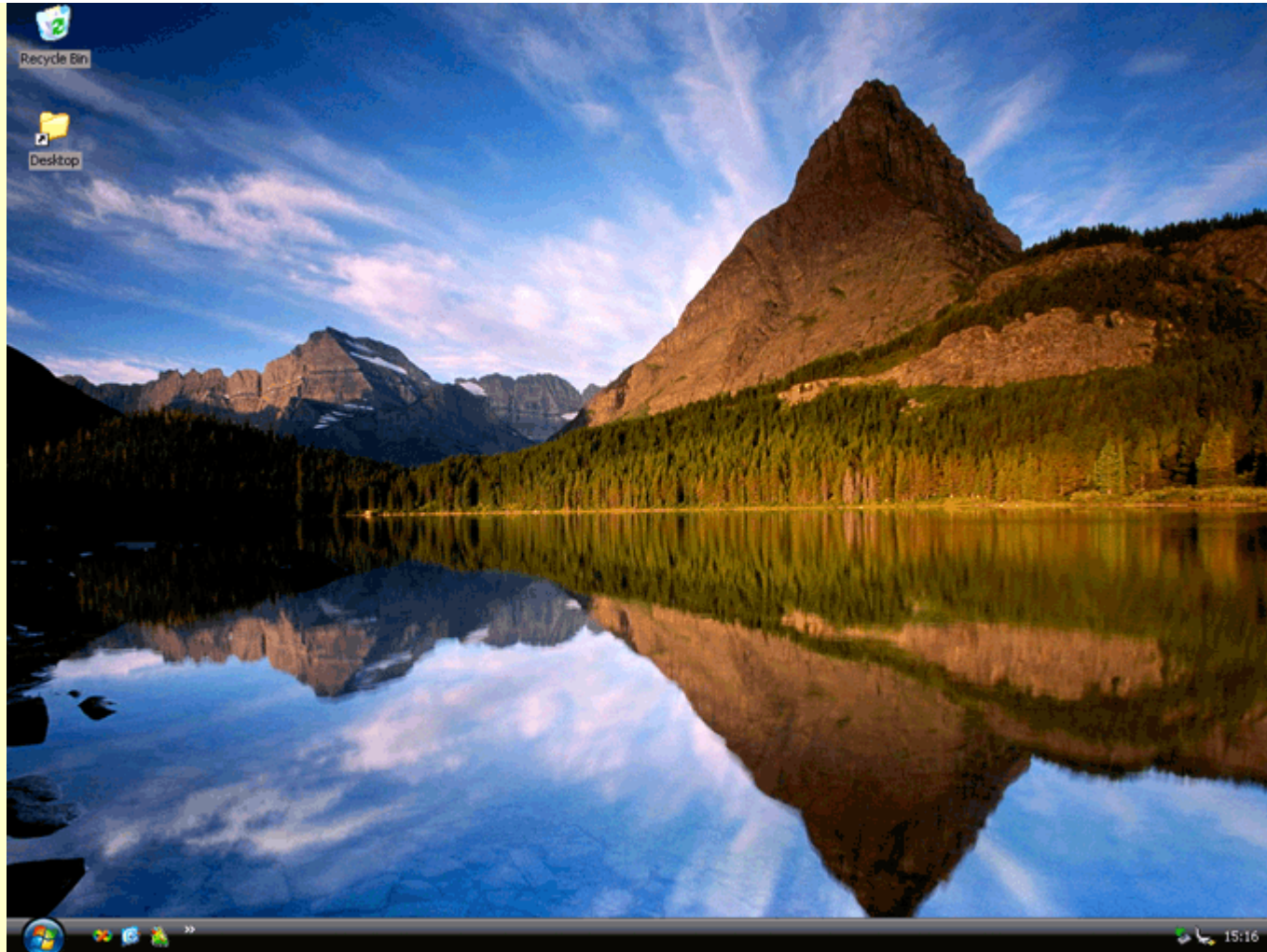


In this case, you do not have to save the contents and exit the program, and then restart the program and continue to edit the contents. Through the invisible mode, you can hide all the windows behind the desktop.



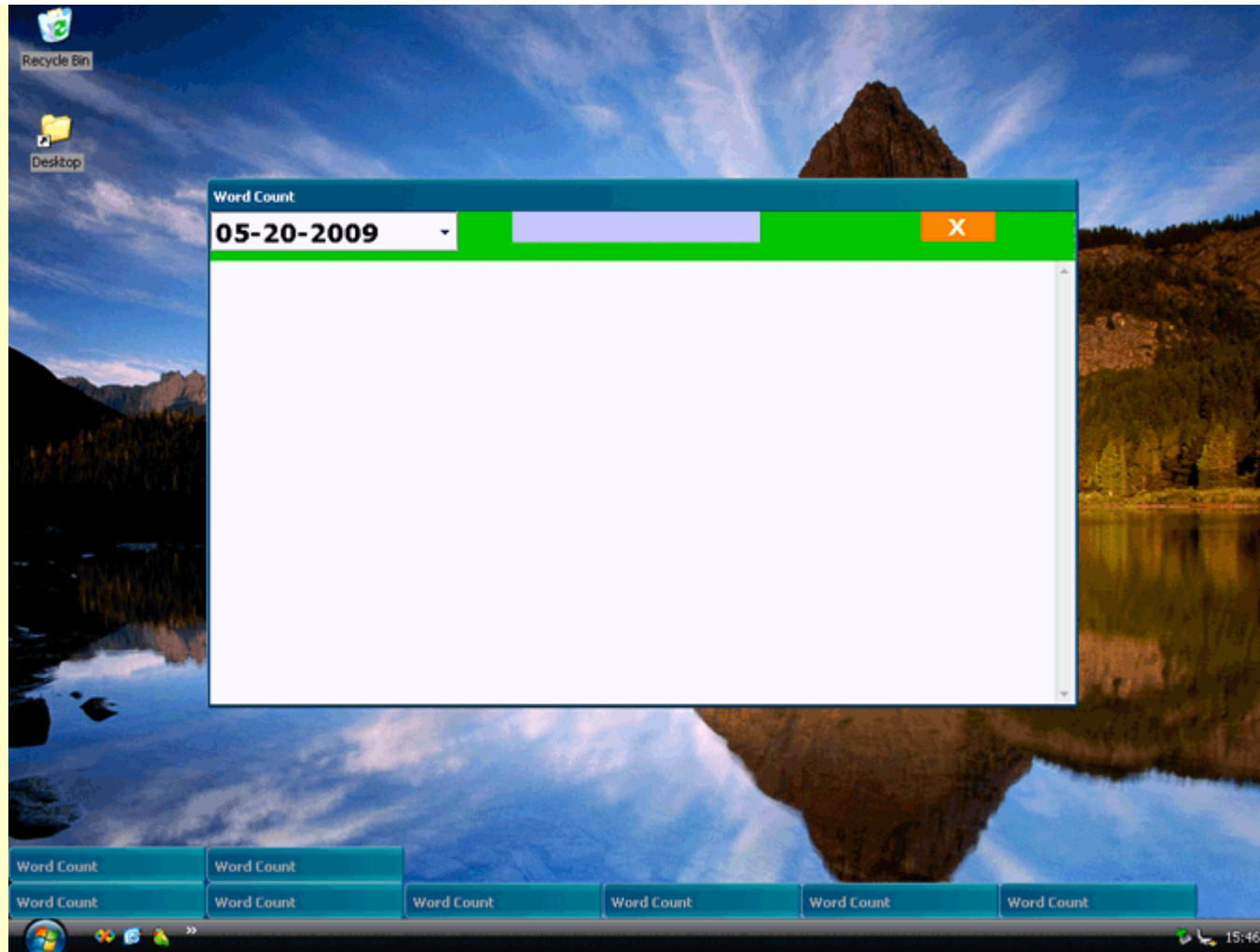
You can simply click the “Desktop” icon on taskbar. Alternatively, you can press **<Win+D>** key.

**Tip:** **<Win>** is the key, which has the logo of Microsoft.



All the windows will disappear immediately, without leaving any vestige. It is the magic of this software. You do not have to worry about the contents after the disappearance. The contents will remain inside the windows.





After clicking the "Desktop" icon or pressing **<Win+D>** key again, you can see all the windows for the second time.



# Shortcut Key

You can press shortcut keys on your keyboard. Combination keys mean that you keep pressing the first key and then press the second key. For example. **<Ctrl+A>**: Keep pressing **<Ctrl>** key and then press **<A>** key.

**<Tab>**: Shift the cursor between file name box and content box.

**<Ctrl+W>**: Show the amount of characters of the content.

**<Ctrl+Mouse Wheel>**: Zoom the words.

**<Ctrl+L>**: Align left the content.

**<Ctrl+R>**: Align right the content.

**<Ctrl+E>**: Center the content.

**<Ctrl+J>**: Justify the content.

**<Ctrl+M>**: Minimize the window.

**<Ctrl+S>**: Create the folder if the file name box is empty, Alternatively, create the file, and save the content, if the file name box contain characters.



# Security

CE Database™ is secure software:

It does not contain any virus, spyware, adware or advertisement. It is clean and pure software.

It does not contain any ActiveX, BHO, toolbar, or other plug-in.

It does not change the homepage or adds contents inside your browser.

It does not use third-party components. All the functions come from original codes.

It does not use Registration Code to lock hardware.

It is totally offline. Anyway, it will not access the Internet for registration, verification, update, upgrade, error report or other purposes.

It does not record your content.

It does not run automatically after you start the computer.

It locks itself when running. Virus or hackers cannot use it to attack the computer.

You can install the software (Installation Edition). Definitely, it has to write basic data in the Windows Registry and hard disk. However, the data will be totally removed from Registry and hard disk after uninstallation.



# Quality

CE Database™ is high quality software:

It does not have any bug, error or loophole. From programming to testing, it has strict quality control. It uses C# 2.0 as the programming language to guarantee the security of memory when the software is running. It will never cause *Memory Leak*.

It works stably. It runs without collapse.

It works on the background, and does not influence Web pages and other programs at all.

Its interface has been designed carefully. The operating system cannot be hurt even users operate this editor mistakenly and blindly.

It requires a little resources of CPU and memory.

# Purchase

This software is not free. Enterprises, governments, commercial organizations and individuals have to pay in order to use this software. However, CE Database™ is not conventional software. The following items show the differences.

## **1. It is one-time license.**

You do not have to pay for new versions year by year. This software contains all the fees of future update and upgrade. After purchase, you can get the new versions for free.

## **2. Individuals do not have amount limitation.**

Enterprises have to pay according to the amount of computers. CE has to provide long-term service for employees. This service requires invisible costs. Old employees will leave and new employees will join. As a result, the software can only be sold to enterprises according to the amount of computers. However, individuals do not have the amount limitation. As an individual, you can install unlimited copies for you and your families. The limitation is that you cannot use it for enterprises or in public computers. Except for your families, you cannot transmit it to others people.

## **3. You do not have to pay online.**

You can use cash to pay through banks. You can directly use remittance of cash through banks. As a



result, you do not have to worry about hidden fees or insecure credit card payment online. The Internet is full of spyware and virus. Definitely, you can pay online through your bank if you wish. CE does not use third party tools. It just uses the banking account.

#### **4. You can get long-term technical support.**

Software companies just give you an registration code after purchase. They do not know who buy it at all, and only provide short-term supports. Unlike software companies, CE provides long-term technical support and through email after purchase. CE will support your work for long period.

**Note:** CE works in Beijing, China. The time zone is different. Therefore, CE cannot provide instant support like telephone or MSN. Besides, CE does not employ many people. CE may not reply all the emails within twenty-four hours on working days. Finally, weekend and holidays are not included.

**Q: Why the basic information is necessary?**

**A:** It helps CE to recognize you after purchase. CE has to enter your information in the database, and provide technical support for you. Besides, you may get discount in future, if you continue to buy the software of CE.

**Q: Can I resell the software to others?**

**A:** No. Anyway, you cannot resell the software after purchase. CE only provides long-term update, upgrade, and technical support for its customers and clients. CE will not serve third-parties.

**Q: Can I use it for small office or home office?**

**A:** Yes. It does not limit commercial purpose of individuals. SOHO can be assumed as personal use, although it has commercial factor. You do not have to buy two copies.

**To buy this software, you should contact CE through: [casualengine@yahoo.com](mailto:casualengine@yahoo.com)**

**You can also send your concern about this software to this mailbox. CE will reply them, even you do not buy it finally.**



**Gmail**  
by Google BETA

Search Mail Search the Web [Show search options](#)  
[Create a filter](#)

**Compose Mail**

[Inbox](#)  
[Starred](#) ★  
[Chats](#)   
[Sent Mail](#)  
[Drafts \(2\)](#)  
[All Mail](#)  
[Spam](#)  
[Trash](#)  
  
[Contacts](#)

**Send** **Save Now** **Discard** Draft autosaved at 8:38 PM (0 minutes ago)

**To:** casualengine@yahoo.com

[Add Cc](#) | [Add Bcc](#)

**Subject:** Buy **CE Database**

[Attach a file](#)

[Rich formatting »](#)

Company Name:  
Address:  
Zip:  
Amount:

**Chat**  
Search, add, or invite

Enterprises should send a simple email to CE like this image. You have to write down the company name, address, and zip code. Vitally, you have to tell CE how many computers you need to use. Later, CE will tell you the sum.

**Gmail** by Google BETA

Search Mail Search the Web [Show search options](#) [Create a filter](#)

**Compose Mail**

[Inbox](#) [Starred](#) [Chats](#) [Sent Mail](#) [Drafts \(2\)](#) [All Mail](#) [Spam](#) [Trash](#) [Contacts](#)

**Chat**  
Search, add, or invite

**Send** **Save Now** **Discard** Draft autosaved at 8:38 PM (1 minute ago)

**To:** casualengine@yahoo.com

[Add Cc](#) | [Add Bcc](#)

**Subject:** Buy **CE Database**

[Attach a file](#)

[Rich formatting »](#)

Full Name:  
Address:  
Zip:

Individuals should send a simple email to CE like this image. You should write down your full name, address and zip code.

**Note:** Please write down your mailing address as clearly as possible. Do include your country.

After receiving the paper contract, CE will tell you the banking account number. Finally, you remit money through your bank. After receiving, CE will allocate an ID for you. You become the official customers or clients of CE. You can use this software officially and forever. Vitally, you can get long-term update, upgrade and technical support. The sample of ID will be: **E0000001-CE Database** or **I0000001-CE Database**. Everytime, you have to write down this ID in your email to get technical support.

**Notice:** You need to pay extra money to your bank for the service of remittance or online payment. The fee of this software does not include this extra charge.

**Caution: The fee is not refundable for any reason. You must carefully decide whether you need to buy it.**

The following information you may need to tell your bank when using remittance.

**Intermediary Bank:** JPMORGAN CHASE BANK, N.A. NEW YORK

**SWIFT BIC:** CHASUS33

**Web Address:** <http://www.jpmorganchase.com/>

**Receiving Bank:** BEIJING RURAL COMMERCIAL BANK CO., LTD, BEIJING, P.R.CHINA

**SWIFT BIC:** BRCBCNBJ

**Web Address:** <http://en.bjrcb.com/>

**Account Number of Beneficiary:** \*\*\*\*\* (CE will tell you later)

**Full Name of Beneficiary:** Beijing Sound & Bamboo Network Technology Service Center

**Address of Beneficiary:** Room 307, No.7 Building, Xizhihecun 5-1, Chaoyang, Beijing, P.R.China

**Phone Number of Beneficiary:** 86-13522031094

**Full Name of Remitter:** Full Name of Your Company or Your Full Name

**Fund Characteristic:** Computer relative service

**Amount:** \*\*US dollars

**Remittance Charge:** OUR





## FAQ

### **Q: Can I modify the names of folders or files directly?**

**A:** No. It will create folders and files according to the date. You cannot modify them in the software directly. However, you can rename them in *Windows Explorer* after creation.

### **Q: How to choose the creation of folder or file?**

**A:** It will create a folder, if the file name box is empty. Alternatively, it will create the .rtf file, if the file name box has characters.

### **Q: Does the content box have to contain content?**

**A:** No. You can create a empty .rtf file. Then, you can double-click and open it and edit it with *Windows WordPad*. Alternatively, you can open it with *Microsoft Word* or *OpenOffice*, and then add the content inside.

### **Q: How to backup all the data?**

**A:** You can simply copy the top folder, *CE Database*, to your portable hard disk, flash drive or other backup devices.

### **Q: Can I delete some folders and .rtf files directly?**

**A:** Yes. Sometimes, you may mistakenly create some folders or .rtf files. Then, you can delete them by hand directly.

# Terms of Use

## **CE Database™ END-USER LICENSE AGREEMENT**

**By using this software, you are agreeing to the terms of this license.**

This End-User License Agreement ("EULA") is a legal agreement between you (either an individual or a single entity) and the mentioned Author (Casual Engine) of this Software for the software product identified above, which includes computer software and may include associated media, printed materials, and "online" or electronic documentation ("SOFTWARE PRODUCT"). By installing, copying, or otherwise using the SOFTWARE PRODUCT, you agree to be bounded by the terms of this EULA. If you do not agree to the terms of this EULA, do not install or use the SOFTWARE PRODUCT.

All versions of the SOFTWARE PRODUCT are protected by copyright laws and international copyright treaties, as well as other intellectual property laws and treaties. The sole property belongs to Casual Engine. The SOFTWARE PRODUCT may not be sold in any manner not described herein without the prior written consent of Casual Engine.

### **1. GRANT OF LICENSE.**

This EULA grants you the following rights:

#### License to.

The SOFTWARE PRODUCT license to enterprises and individuals for commercial and non-commercial purposes. Any purpose of the formal edition, you must purchase from Author before using it.

#### Installation and Use.

You may install and use an unlimited number of copies of the SOFTWARE PRODUCT for personal and familial use.

#### Reproduction and Distribution.

You may reproduce and distribute an unlimited number of copies of the SOFTWARE PRODUCT for personal and familial use; provided that each copy shall be a true and complete copy, including all copyright and trademark notices, and shall be accompanied by a copy of this EULA. Copies of the SOFTWARE PRODUCT may not be distributed as a standalone product or service or included with your own product or service. The SOFTWARE PRODUCT may not be included in any free or profit packages or products or service.

## **2. DESCRIPTION OF OTHER RIGHTS AND LIMITATIONS.**

### Reverse Engineering, Decompilation, Disassembly and Modification.

You may not reverse engineer, decompile, or disassemble the SOFTWARE PRODUCT and change (add, delete or modify) the resources of the compiled assembly, except and only to the extent that such activity is expressly permitted by applicable law notwithstanding this limitation.

### Separation of Components.

The SOFTWARE PRODUCT is licensed as a single product. Its component parts may not be separated for use on more than one computer.

### Software Transfer.

You may permanently transfer all of your rights under this EULA, provided the recipient agrees to the terms of this EULA.

### Termination.

Without prejudice to any other rights, the Author of this Software may terminate this EULA if you fail to comply with the terms and conditions of this EULA. In such event, you must destroy all copies of the SOFTWARE PRODUCT and all of its component parts.

## **3. COPYRIGHT.**

All title and copyrights in and to the SOFTWARE PRODUCT(including but not limited to any images, photographs, animations, video, audio, music, text, and "applets" incorporated into the SOFTWARE PRODUCT), the accompanying printed materials, and any copies of the SOFTWARE PRODUCT are owned by the Author of this Software.

#### **4. LIMITED WARRANTY.**

##### NO WARRANTIES.

The Author of this Software expressly disclaims any warranty for the SOFTWARE PRODUCT. The SOFTWARE PRODUCT and any related documentation is provided "as is" without warranty of any kind, either express or implied, including, without limitation, the implied warranties or merchantability, fitness for a particular purpose, or non-infringement. The entire risk arising out of use or performance of the SOFTWARE PRODUCT remains with you.

##### NO LIABILITY FOR DAMAGES.

In no event shall the Author of this Software be liable for any special, consequential, incidental or indirect damages whatsoever (including, without limitation, damages for loss of business profits, business interruption, loss of business information, or any other pecuniary loss) arising out of the use of or inability to use this product, even if the Author of this Software is aware of the possibility of such damages and known defects.

#### **5. REGISTRATION**

No registration of this SOFTWARE PRODUCT is required.

**Copyright © Casual Engine. All Rights Reserved.**

## Contact Us

**Registered Name:** Beijing Sound & Bamboo Network Technology Service Center

**Business Location:** Room 307, No.7 Building, Xizhihecun 5-1, Chaoyang, Beijing, China

**Zip Code:** 100023

**Email:** [casualengine@yahoo.com](mailto:casualengine@yahoo.com)

You can feel free to send your feedback or suggestion to us. You do not have to write the email as formal as a letter. Besides, you do not have to leave your name. You can simply leave a message like:

---

CE:

Your content

---



## Epilogue

Unlike database software, CE Database™ does not use tables or provide search function. Instead, CE creates this software to solve the problem of database software.

Many files or data are not suitable to be stored inside the database software. However, you still have to manage them well. Otherwise, the files or data will become messy in your server or personal computer. You have to spend much time finding the files, if you need to update them. Besides, you have to waste much time and energy to backup the data.

CE uses this simple software to reduce your work of data management. You can use it to classify all of your files and data with ease and accuracy.

Good Luck!



## About Owner

*Beijing Sound & Bamboo Network Technology Service Center* is a commercial organization, which works in Beijing, China. It was found on October 15, 2008. Before registration in Beijing government, its team has been researching and developing technology over three years. It professionally provides high quality network services and software products.

Currently, it has a Website, which is called *Casual Engine*. This Website specially provides offline network service. Its mission is to reduce the costs of enterprises and individuals. Besides, it creates values for them.

**Business License:** 110105602133632

**Tax Number:** 441900198208310031

[www.casualengine.com](http://www.casualengine.com)

