

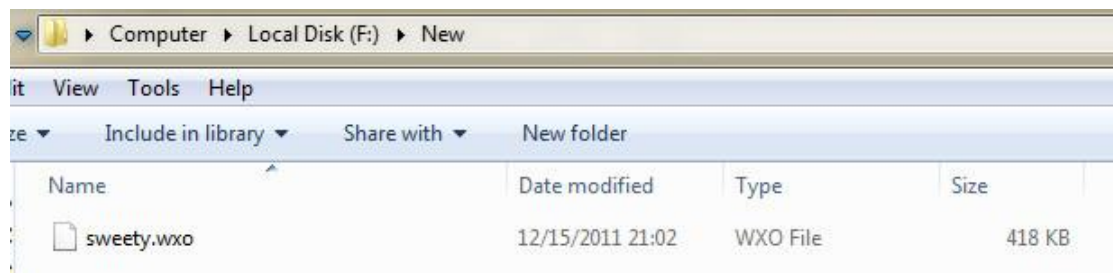
Introduction to WXOConfig.exe

What is WXOConfig.exe?

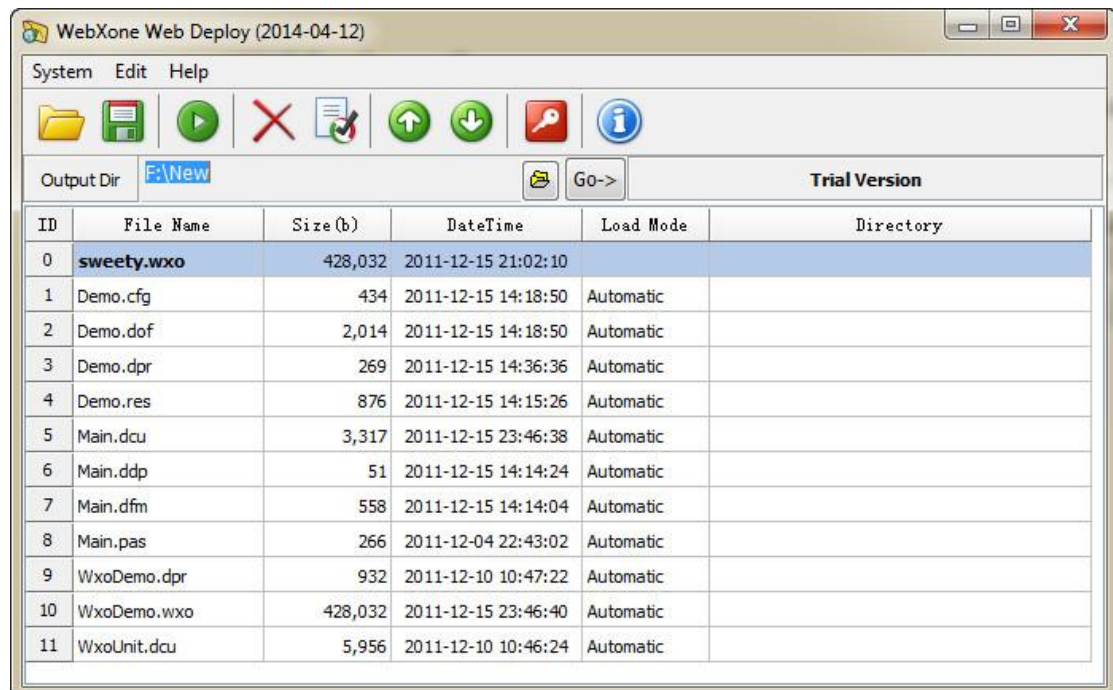
WXOConfig.exe can get the created web application associated with server. It will greatly increase the loading speed of the web application.

How to use WXOConfig.exe?

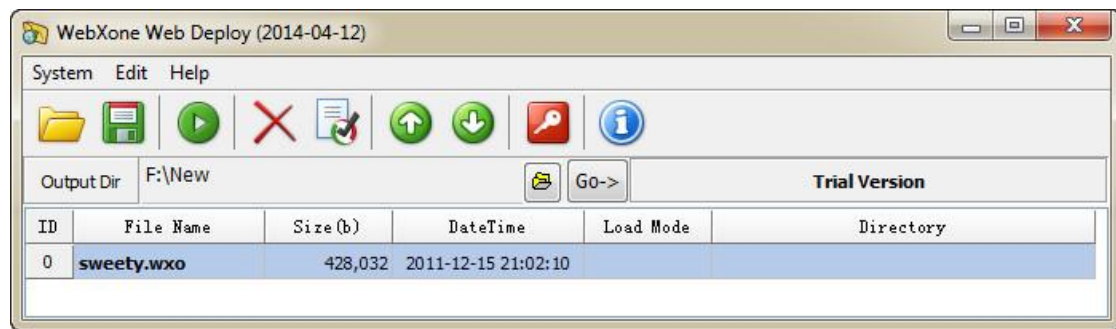
Step1 Create a new folder and put the created web application (*.wxo or *.exe) and other subsidiary files into this folder.



Step2 Open the *.wxo file with WXOConfig.exe



Step3 You can remove other files in the list.



Step4 Configure *.wxo file with [Edit] > [Set Current File Load...]

...**Automatic**: load the files (*.wxo, database and other) to browser's clients automatically.

...**Manual**: load the files (*.wxo, database and other) to browser's clients manually. (By GetAttachFile(Url,2), Url=the address, 2=the item ID of attached file)

...**Automatic and No update**: ...**Automatic** and never reload in the future

Step5 Generate the deployment files and uploads them to server

