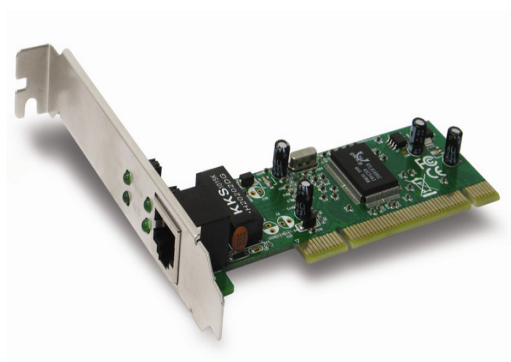


Quick Installation Guide

10/100/1000Mbps PCI Network Adapter

Model # AG32PCI



Package Contents:

- 10/100/1000Mbps PCI Network Adapter
- Quick Installation Guide
- Driver CD

Section 1

Hardware Installation

Thanks for your purchase of Airlink101® 10/100/1000Mbps PCI Network Adapter. The Installation of the 10/100/1000Mbps PCI Network Adapter requires hardware installation first and then driver installation.

Step 1 Switch off the computer, unplug the power cord, and remove the computer's cover.

Step 2 Select an unused PCI slot and remove its protective bracket.

Step 3 Carefully insert the Adapter and press until all the edge connectors are firmly seated inside the slot.

Step 4 Install the bracket screw, which secures the Adapter to the computer's chassis.

Step 5 Replace the computer's cover and connect the network cable to the newly installed network Adapter. Reconnect the computer's power cord and plug it into the power outlet.

Section 2

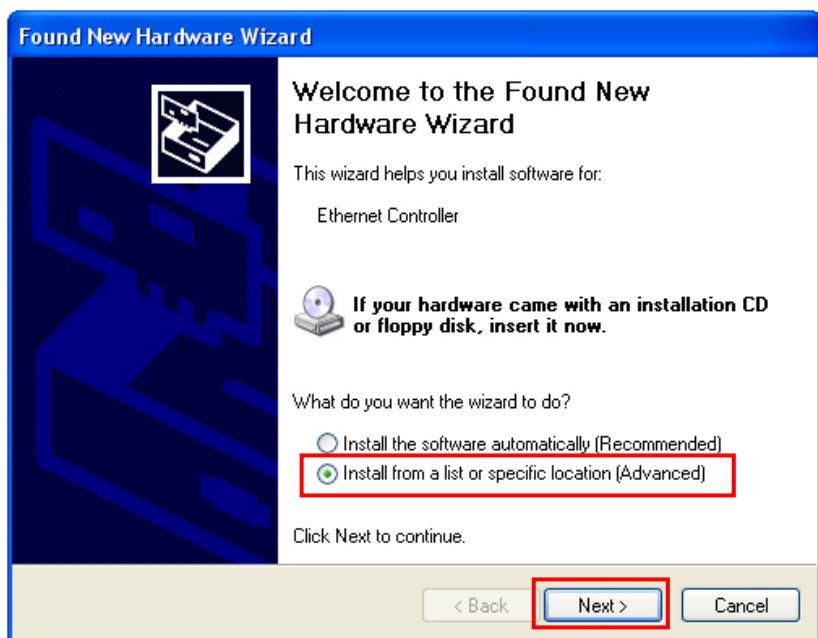
Driver Installation

Usually for **Windows XP** or above, the adapter's driver is already included in the OS, and after you install the network adapter, your system will automatically install the driver for you.

For other operating systems, before you connect the PCI Adapter to the network, you have to install the adapter's driver first. The driver for each operating system is under a separate folder of the provided compact disk.

Note: The following steps and screen shots are for Windows XP. Steps for other Windows operating systems will be noted beneath each screen shot if different.

Step 1 At the **Found New Hardware Wizard**, select **Install from a list or specific location (Advanced)** and click **Next**.

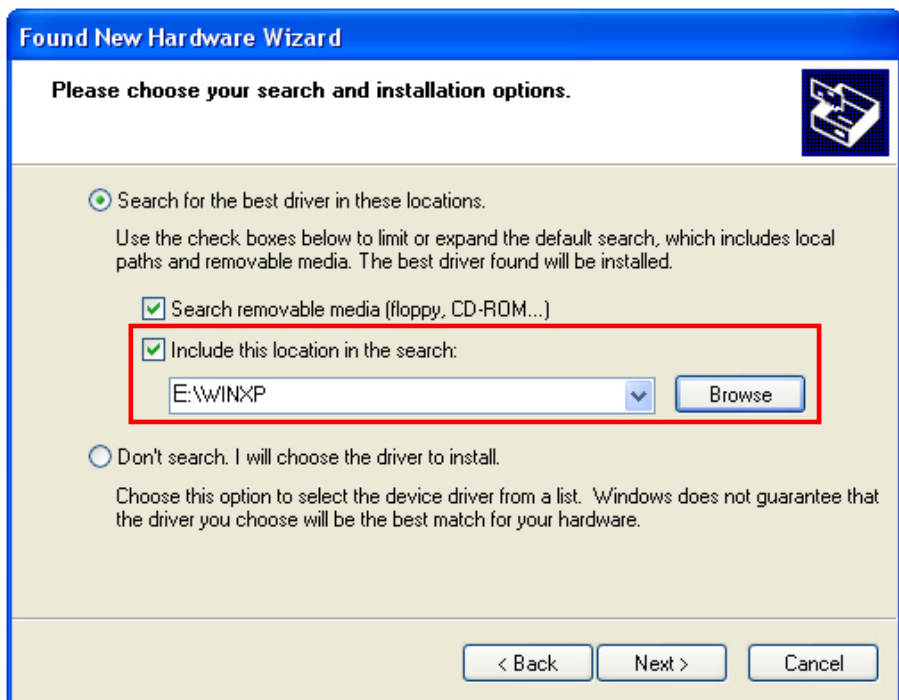


Windows 2000: Click **Next** at the **Found New Hardware Wizard**. Select **Search for a suitable driver for my device (recommended)** and click **Next**.

Windows ME: Click **Next** at the **Add New Hardware Wizard**. Select **Specify the location of the driver (Advanced)** and click **Next**.

Windows 98SE: Click **Next** at the **Add New Hardware Wizard**. Select **Search for the best driver for your device (Recommended)** and click **Next**.

Step 2 Check on **Include this location in the search**. Click on **Browse** to select **E:\WINXP** (where E is the letter of your CD drive) and click **Next**.

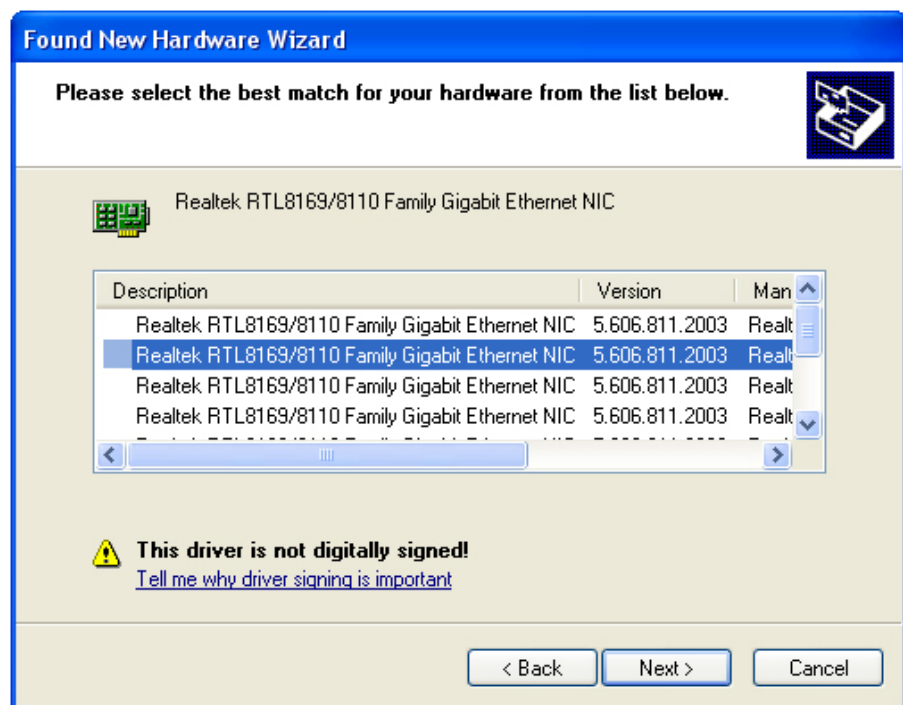


Windows 2000: Insert the provided driver disk. Select **Specify a location** and click **Next**. At the **copy manufacturer's files from** field, select **E:\Win2k** (where E is the letter of your CD drive) and click **OK**.

Windows ME: Insert the provided driver disk. Select **Specify a location**, select **E:\WinME** (where E is the letter of your CD drive) and click **Next**.

Windows 98SE: Insert the provided driver disk. Select **Specify a location**, select **E:\Win98** (where E is the letter of your CD drive) and click **Next**.

Step 3 Click **Next** to install the driver.



Step 4 Click **Continue Anyway** at the **Windows Logo Compatibility** message.

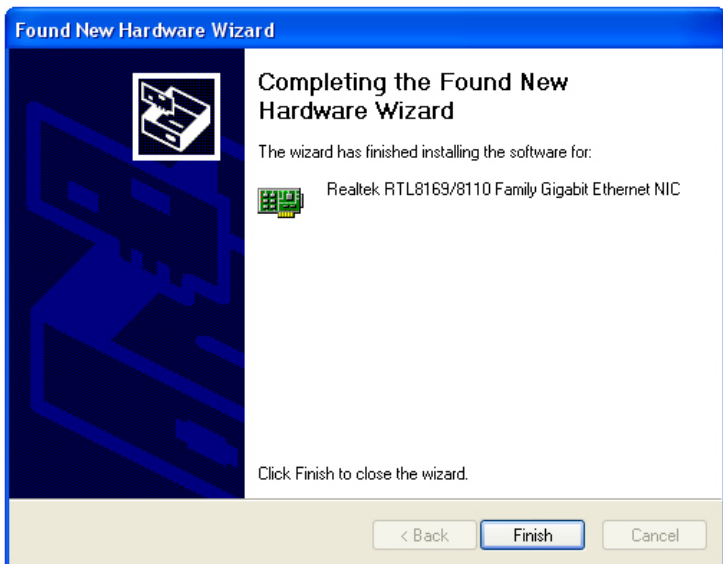


Windows 2000: Click **Yes** to continue.

Windows ME: Insert the **Windows ME** CD-ROM and click **OK**.

Windows 98SE: Insert the **Windows 98SE** CD-ROM and click **OK**.

Step 5 Click **Finish**. Restart your computer.



Section 3

Technical Support

E-mail: support@airlink101.com

Toll Free: 1-888-746-3238

Website: www.airlink101.com

*Actual throughput will vary. Specifications are subject to change without notice. All products and trademarks are the property of their respective owners. Photos of product may not reflect actual content. Copyright ©2009 Airlink101®